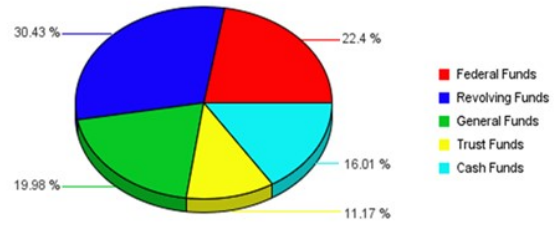


**2012-2013 University of Nebraska - Lincoln**

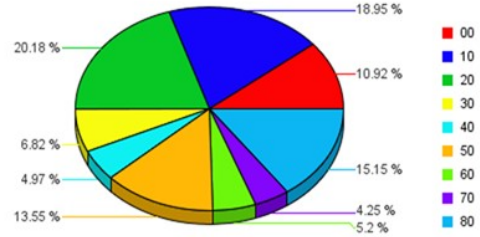
**Estimated Revenue by Fund Source**

Federal Funds	258,766,556
Revolving Funds	351,614,208
General Funds	230,901,834
Trust Funds	129,079,360
Cash Funds	185,017,388
<b>Total Estimated Funding</b>	<b>1,155,379,346</b>



**Budgeted Expenditures by Spending Category**

10 - Instruction	218,962,174
20 - Research	233,151,237
30 - Public Service	78,849,819
40 - Academic Support	57,445,192
50 - Student Services	156,526,079
60 - Institutional Admin	60,088,225
70 - Physical Plant Operations	49,153,684
80 - Student Financial Support	175,039,052
00 - Other	126,163,884
<b>Total Budgeted Expenditures</b>	<b>1,155,379,346</b>



Subprogram	10 - Instruction	20 - Research	30 - Public Service	40 - Academic Support	50 - Student Services	60 - Institutional Admin	70 - Physical Plant Operations	80 - Student Financial Support	90 - Independent Operations	00 - Other	Sub Program Total
1000220/20				666,741	2,474,732	5,815,332					8,956,805
1000258/58						0					0
Academic Affairs	14,156,676	105,903	1,112,098	3,343,756		1,841,170	5,513	611,607			21,176,723
Agency Funds										5,429,051	5,429,051
Agriculture Research Division		71,742,100	791,966				101,000				72,635,066
Business and Finance			65,238		478,315	18,413,400	702,607			34,265,092	53,924,652
College of Ag Sciences and Natural Resources	14,968,200		2,500	1,378,787		109,510					16,458,997
College of Architecture	4,184,923	6,607	260,330	394,855							4,846,715
College of Arts and Sciences	52,474,220	4,372,478	3,851,792	5,595,941	58,816						66,353,247
College of Business Administration	16,308,799	252,345	510,238	2,477,244				43,449			19,592,075
College of Education and Human Sciences	15,422,707	1,966,621	3,624,075	3,763,150							24,776,553
College of Engineering and Technology	27,184,347	64,682		1,733,743							28,982,772
College of Fine and Performing Arts	9,467,800		711,202	1,094,772							11,273,774
College of Journalism and Mass Communication	3,171,196	24,329	42,924	1,170,429							4,408,878
College of Law	7,491,212		84,626	1,664,275							9,240,113
Company Balance Sheets	13,854,242	128,961,103	14,582,888	4,824,463	2,143,721	14,537		168,250,218		66,306,489	398,937,661
Cooperative Extension Service			37,428,811			500					37,429,311
Executive Administration				65,524		1,132,524					1,198,048

Extended Education	13,334,218			677,302							14,011,520
Facilities Mgmt & Planning							44,963,630			5,240,835	50,204,465
General Expense	458,263		7,000			12,025,252				184,886	12,675,401
IANR International Programs		500,708									500,708
Information Services				8,207,109	124,556	94,172				14,432,530	22,858,367
Innovation Campus			100,000								100,000
Instruction Budget Adjustments	2,090,445	20,809,214									22,899,659
Intercollegiate Athletics					85,478,252						85,478,252
International Programs	1,605,000		356,750		11,012						1,972,762
Museums and Art Gallery			57,539	2,566,216						110,593	2,734,348
Nebraska Forest Service			2,804,912								2,804,912
Other Auxiliary Enterprises			2,820,897	5,139,893			183,893				8,144,683
Other IANR	83,840	1,856,249	1,489,013	-413,554		15,752,406	2,799,690			184,959	21,752,603
Other Instruction or Research	17,593,761				85,818						17,679,579
Research		488,898	16,640			4,195,627					4,701,165
Research Initiative		0									0
Student Aid							6,133,778				6,133,778
Student Housing					38,098,500					9,449	38,107,949
Student Services			119,116		27,562,357	693,795	397,351				28,772,619
Summer Sessions	5,112,325										5,112,325
Television and Radio			7,964,119								7,964,119
Tobacco Fund Research		0									0
University Libraries		2,000,000	45,145	13,094,546	10,000						15,149,691
<b>Total Budgeted Expenditures</b>	<b>218,962,174</b>	<b>233,151,237</b>	<b>78,849,819</b>	<b>57,445,192</b>	<b>156,526,079</b>	<b>60,088,225</b>	<b>49,153,684</b>	<b>175,039,052</b>		<b>126,163,884</b>	<b>1,155,379,346</b>