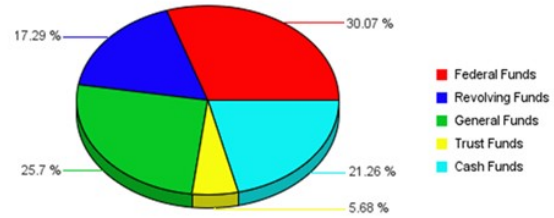


**2012-2013 University of Nebraska at Kearney**

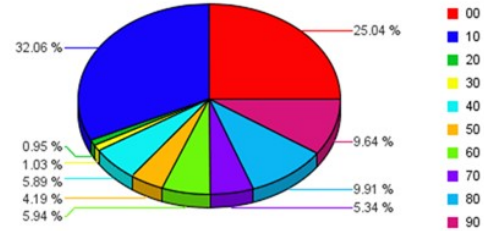
**Estimated Revenue by Fund Source**

Federal Funds	40,800,000
Revolving Funds	23,460,000
General Funds	34,867,838
Trust Funds	7,700,000
Cash Funds	28,847,364
<b>Total Estimated Funding</b>	<b>135,675,202</b>



**Budgeted Expenditures by Spending Category**

10 - Instruction	43,503,997
20 - Research	1,286,414
30 - Public Service	1,403,912
40 - Academic Support	7,985,116
50 - Student Services	5,685,625
60 - Institutional Admin	8,065,480
70 - Physical Plant Operations	7,251,141
80 - Student Financial Support	13,440,623
90 - Independent Operations	13,081,722
00 - Other	33,971,172
<b>Total Budgeted Expenditures</b>	<b>135,675,202</b>



Subprogram	10 - Instruction	20 - Research	30 - Public Service	40 - Academic Support	50 - Student Services	60 - Institutional Admin	70 - Physical Plant Operations	80 - Student Financial Support	90 - Independent Operations	00 - Other	Sub Program Total
Academic Affairs	8,244,212		16,750	207,084	16,561	508,485					8,993,092
Academic Computing Support				2,458,684		460,140			102,100	1,776,314	4,797,238
Agency Funds										28,722,460	28,722,460
Business and Finance						2,275,806			1,428,622		3,704,428
College of Business Administration	6,804,342			302,523							7,106,865
College of Education	6,378,783		55,643	458,951							6,893,377
College of Fine Arts & Humanities	7,525,579			271,735	77,921						7,875,235
College of Graduate Studies	576,005	464,570		317,505		185,731					1,543,811
College of Natural and Social Sciences	9,735,052	29,844	6,118	332,743							10,103,757
Company Balance Sheets										335,084	335,084
Continuing Studies and Public Services	271,443			230,820							502,263
Executive Administration						648,270					648,270
General Expense						1,455,460	496,955		247,578		2,199,993
Income Activity	2,100,060	792,000	388,398	47,078	814,474	512,499	7,500	11,956,927	50,000	3,137,314	19,806,250
Intercollegiate Athletics					2,499,561						2,499,561
International Programs	0				436,877	4,500					441,377
Museums and Art Gallery				226,924		41,907					268,831
Other Instruction and Research	465,852		881,512	82,051	1,313	193,010					1,623,738
Physical Plant Administration						61,962	6,746,686		3,529,001		10,337,649
Student Affairs			55,491		1,822,098	1,717,710			7,724,421		11,319,720

Student Aid					16,820				1,483,696			1,500,516
Summer Sessions	1,402,669											1,402,669
University Libraries				3,049,018								3,049,018
<b>Total Budgeted Expenditures</b>	<b>43,503,997</b>	<b>1,286,414</b>	<b>1,403,912</b>	<b>7,985,116</b>	<b>5,685,625</b>	<b>8,065,480</b>	<b>7,251,141</b>	<b>13,440,623</b>	<b>13,081,722</b>	<b>33,971,172</b>	<b>135,675,202</b>	