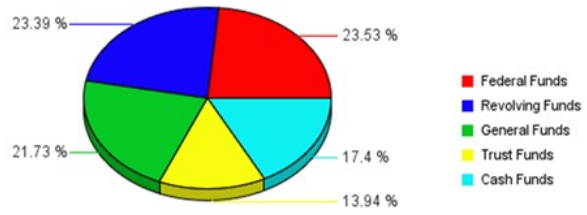


**2012-2013 University of Nebraska**

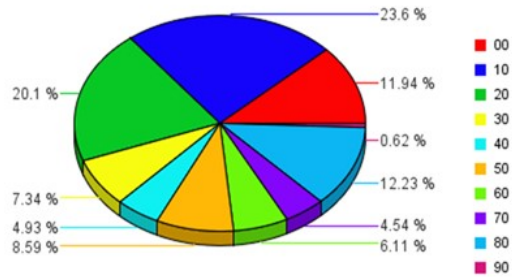
**Estimated Revenue by Fund Source**

Federal Funds	536,466,556
Revolving Funds	533,237,808
General Funds	495,403,534
Trust Funds	317,779,360
Cash Funds	396,657,351
<b>Total Estimated Funding</b>	<b>2,279,544,609</b>



**Budgeted Expenditures by Spending Category**

10 - Instruction	538,065,547
20 - Research	458,249,271
30 - Public Service	167,251,067
40 - Academic Support	112,445,401
50 - Student Services	195,767,577
60 - Institutional Admin	139,277,359
70 - Physical Plant Operations	103,514,257
80 - Student Financial Support	278,698,388
90 - Independent Operations	14,192,511
00 - Other	272,083,231
<b>Total Budgeted Expenditures</b>	<b>2,279,544,609</b>



PCS Code	UNCA	UNK	UNL	UNMC	UNO	University Totals
10 - Instruction	1,079,750	43,503,997	218,962,174	184,241,376	90,278,250	538,065,547
20 - Research	14,327,348	1,286,414	233,151,237	201,016,775	8,467,497	458,249,271
30 - Public Service	860,281	1,403,912	78,849,819	76,802,466	9,334,589	167,251,067
40 - Academic Support	248,475	7,985,116	57,445,192	33,580,579	13,186,039	112,445,401
50 - Student Services	1,940,162	5,685,625	156,526,079	794,660	30,821,051	195,767,577
60 - Institutional Admin	30,301,852	8,065,480	60,088,225	22,261,909	18,559,893	139,277,359
70 - Physical Plant Operations	11,000,000	7,251,141	49,153,684	21,749,679	14,359,753	103,514,257
80 - Student Financial Support	464,206	13,440,623	175,039,052	2,416,005	87,338,502	278,698,388
90 - Independent Operations		13,081,722		1,110,789		14,192,511
00 - Other	500,000	33,971,172	126,163,884	97,648,833	13,799,342	272,083,231
<b>University of Nebraska TOTAL</b>	<b>60,722,074</b>	<b>135,675,202</b>	<b>1,155,379,346</b>	<b>641,623,071</b>	<b>286,144,916</b>	<b>2,279,544,609</b>