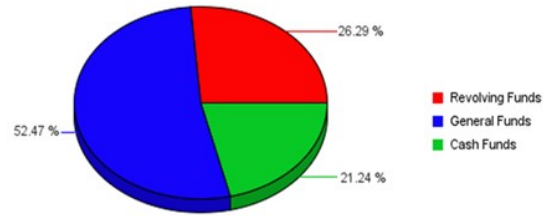


2012-2013 Nebraska College of Technical Agriculture

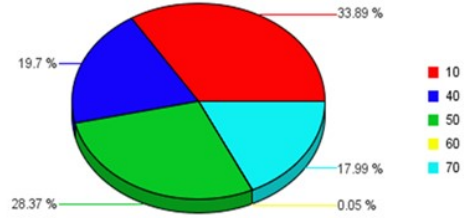
Estimated Revenue by Fund Source

Revolving Funds	1,300,000
General Funds	2,595,156
Cash Funds	1,050,357
Total Estimated Funding	4,945,513



Budgeted Expenditures by Spending Category

10 - Instruction	1,675,899
40 - Academic Support	974,290
50 - Student Services	1,403,259
60 - Institutional Admin	2,500
70 - Physical Plant Operations	889,565
Total Budgeted Expenditures	4,945,513



Subprogram	10 - Instruction	20 - Research	30 - Public Service	40 - Academic Support	50 - Student Services	60 - Institutional Admin	70 - Physical Plant Operations	80 - Student Financial Support	90 - Independent Operations	00 - Other	Sub Program Total
Nebraska College of Technical Agriculture	1,675,899			974,290	1,403,259	2,500	889,565				4,945,513
Total Budgeted Expenditures	1,675,899			974,290	1,403,259	2,500	889,565				4,945,513