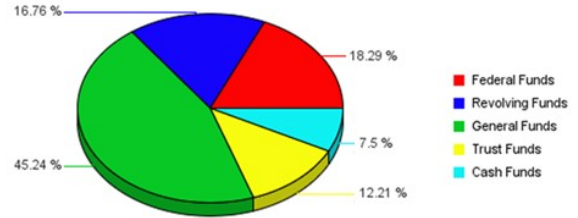


2012-2013 Institute of Agricultural and Natural Resources

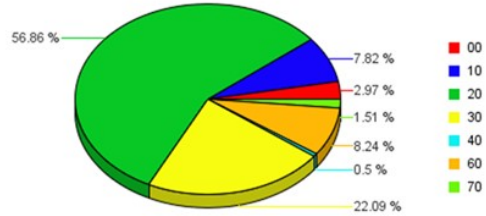
Estimated Revenue by Fund Source

Federal Funds	35,201,594
Revolving Funds	32,250,000
General Funds	87,064,350
Trust Funds	23,500,000
Cash Funds	14,438,086
Total Estimated Funding	192,454,030



Budgeted Expenditures by Spending Category

10 - Instruction	15,052,040
20 - Research	109,435,898
30 - Public Service	42,517,202
40 - Academic Support	965,233
60 - Institutional Admin	15,862,416
70 - Physical Plant Operations	2,900,690
00 - Other	5,720,551
Total Budgeted Expenditures	192,454,030



Subprogram	10 - Instruction	20 - Research	30 - Public Service	40 - Academic Support	50 - Student Services	60 - Institutional Admin	70 - Physical Plant Operations	80 - Student Financial Support	90 - Independent Operations	00 - Other	Sub Program Total
Agency Funds										4,969,544	4,969,544
Agriculture Research Division		71,742,100	791,966				101,000				72,635,066
College of Ag Sciences and Natural Resources	14,968,200		2,500	1,378,787		109,510					16,458,997
Company Balance Sheets		35,336,841								566,048	35,902,889
Cooperative Extension Service			37,428,811			500					37,429,311
IANR International Programs		500,708									500,708
Nebraska Forest Service			2,804,912								2,804,912
Other IANR	83,840	1,856,249	1,489,013	-413,554		15,752,406	2,799,690			184,959	21,752,603
Total Budgeted Expenditures	15,052,040	109,435,898	42,517,202	965,233		15,862,416	2,900,690			5,720,551	192,454,030