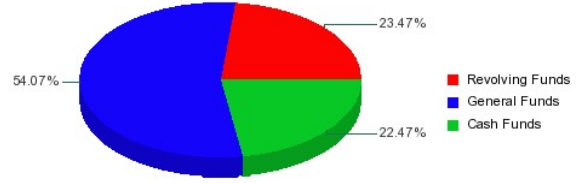


**2011-2012 Nebraska College of Technical Agriculture**

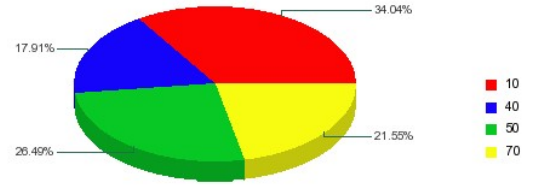
**Estimated Revenue by Fund Source**

Revolving Funds	1,116,806
General Funds	2,573,190
Cash Funds	1,069,218
<b>Total Estimated Funding</b>	<b>4,759,214</b>



**Budgeted Expenditures by Spending Category**

10 - Instruction	1,620,274
40 - Academic Support	852,521
50 - Student Services	1,260,669
70 - Physical Plant Operations	1,025,750
<b>Total Budgeted Expenditures</b>	<b>4,759,214</b>



Subprogram	10 - Instruction	20 - Research	30 - Public Service	40 - Academic Support	50 - Student Services	60 - Institutional Admin	70 - Physical Plant Operations	80 - Student Financial Support	90 - Independent Operations	00 - Other	Sub Program Total
Nebraska College of Technical Agriculture	1,620,274			852,521	1,260,669		1,025,750				4,759,214
<b>Total Budgeted Expenditures</b>	<b>1,620,274</b>			<b>852,521</b>	<b>1,260,669</b>		<b>1,025,750</b>				<b>4,759,214</b>