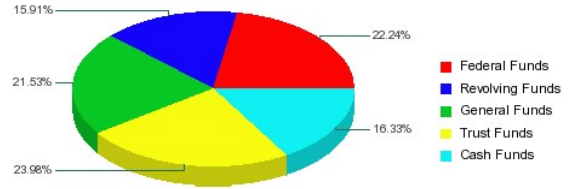


2010-2011 University of Nebraska Medical Center

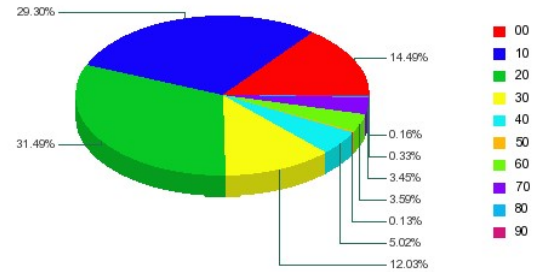
Estimated Revenue by Fund Source

Federal Funds	129,830,000
Revolving Funds	92,856,500
General Funds	125,708,136
Trust Funds	140,000,000
Cash Funds	95,348,895
Total Estimated Funding	583,743,531



Budgeted Expenditures by Spending Category

10 - Instruction	171,011,619
20 - Research	183,838,590
30 - Public Service	70,246,092
40 - Academic Support	29,316,077
50 - Student Services	773,816
60 - Institutional Admin	20,978,942
70 - Physical Plant Operations	20,111,247
80 - Student Financial Support	1,952,075
90 - Independent Operations	933,216
00 - Other Non-Expenditures	84,581,857
Total Budgeted Expenditures	583,743,531



Subprogram	10 - Instruction	20 - Research	30 - Public Service	40 - Academic Support	50 - Student Services	60 - Institutional Admin	70 - Physical Plant Operations	80 - Student Financial Support	90 - Independent Operations	00 - Other Non-Expenditures	Sub Program Total
Academic Affairs	58,373	424,617	179	1,321,851						76,355	1,881,375
Academic Computing Support				1,892,159						6,490,071	8,382,230
Business and Finance						11,324,157	-495,560		373,456	8,616,319	19,818,372
Clearing Centers										2,417,510	2,417,510
College of Dentistry	8,441,385	1,401,039	682	1,755,516				5,062		1,259,031	12,862,715
College of Medicine	96,692,029	29,650,772	17,655,155	8,482,018		122,571				3,376,933	155,979,478
College of Nursing	8,695,112	975,755	172,653	7,014,465						92,362	16,950,347
College of Pharmacy	1,317,155	4,880,466	17,174	1,687,214						45,182	7,947,191
College of Public Health	6,849,770	1,644,023	810,417	340,150						1,072,344	10,716,704
Company Balance Sheets	27,287,050	101,781,537	13,525,687	2,669,431	118	2,635,327		1,044,878	559,760	47,882,253	197,386,041
Continuing Studies and Public Services	7,013,600										7,013,600
Dental Clinic			5,850,000							64,030	5,914,030
Eppley Research Institute	348,045	9,563,564	14,113							124,829	10,050,551
Executive Administration	245,452			56,701		1,262,751					1,564,904
General Expense						3,136,832				412,258	3,549,090
Graduate College	3,698	79,132		1,341,325							1,424,155
Instruction Budget Adjustments	4,014,465										4,014,465
International Programs										152,202	152,202
McGoogan Library of Medicine	6,900			2,698,003						216,642	2,921,545
Munroe-Meyer Institute	2,017,507	878,517	11,711,954							1,878,110	16,486,088
Munroe-Meyer State Support			3,851,775								3,851,775
Other Instruction or Research	2,710,351	20,175,000		54,420		615,212					23,554,983
Other Plant Operations & Maintenance							3,213,630				3,213,630
Physical Plant Administration						1,111,346	17,393,177			7,507,076	26,011,599
Primary Care Joint Venture			8,106,400								8,106,400
Research Initiative		0									0
Rural Health Education Network	39,368										39,368
School of Allied Health	5,209,698	95,507	27,503	2,824						264,511	5,600,043
Stores/Services		11,874								2,382,259	2,394,133
Student Aid								352,135			352,135
Student Services	61,661				773,698	770,746		550,000		251,580	2,407,685

Tobacco Fund Research		11,010,000		0							11,010,000
University Medical Associates			8,502,400								8,502,400
UNMC/Eppley Center Cancer Research & Care		1,266,787									1,266,787
Total Budgeted Expenditures	171,011,619	183,838,590	70,246,092	29,316,077	773,816	20,978,942	20,111,247	1,952,075	933,216	84,581,857	583,743,531