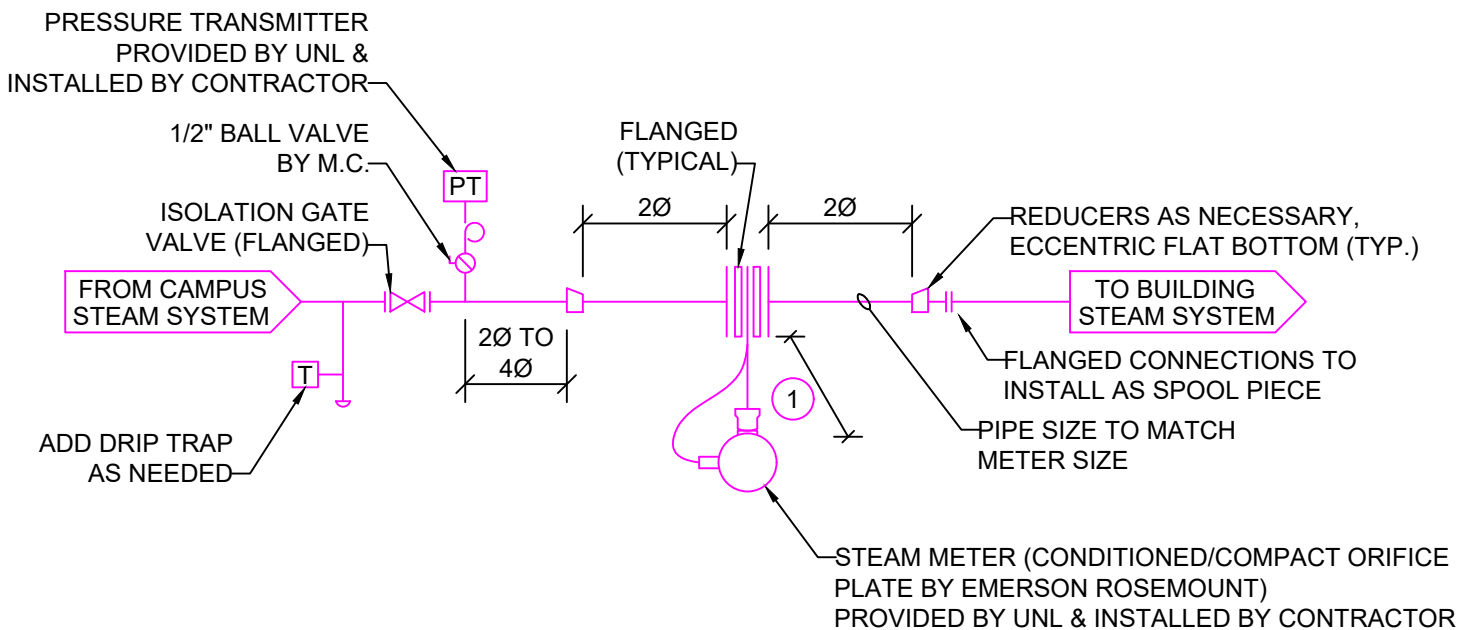


GENERAL NOTES

1. STEAM METER TO BE INSTALLED A MINIMUM OF 36" ABOVE FINISHED FLOOR. STEAM METER TO BE INSTALLED NEAR WALL OR IN AN AREA WITH 24" X 24" CLEARANCE OF SPACE BELOW IT TO MOUNT A RACK FOR PROCESS CONTROLS.
2. METER TO BE INSTALLED SO THE TRANSMITTER HEAD IS AT A DOWNWARDS ANGLE BETWEEN 30 AND 45 DEGREES.

KEY NOTES

1. PROVIDE A MINIMUM OF 15" OF CLEARANCE FROM A WALL OR OTHER OBSTRUCTIONS FOR PROCESS PIPING.



STEAM METERING MECHANICAL PIPING DETAIL

1

M1.01

SCALE: NO SCALE

Detail Title: Steam Metering Mechanical Piping Detail	Detail No.: 33 63 00 - 05	Facilities, Planning & Capital Programs Standard Detail	
Scale: N.T.S.	Date: January 2025		