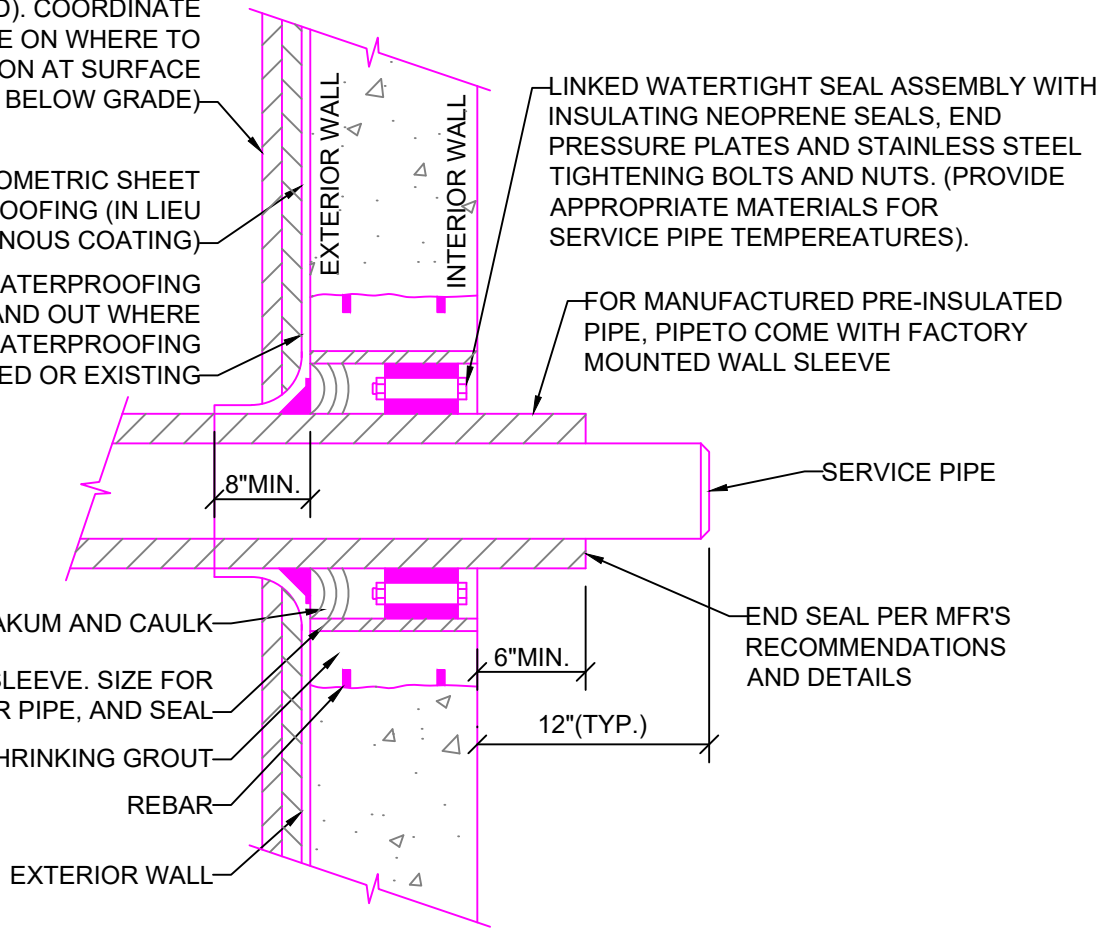


(AS DICTATED ON PROJECT-BY-PROJECT BASIS) DOUBLE LAYER (4") OF 2" RIDGID FOAM BOARD, NON OVERLAPPING SEAMS. INSULATION TO ALSO BE ADDED UNDER SLAB (BELOW SLAB RATED). COORDINATE WITH UNL LANDSCAPE ON WHERE TO TERMINATE INSULATION AT SURFACE (DEFAULT IS 6" BELOW GRADE)

ELASTOMETRIC SHEET WATERPROOFING (IN LIEU OF BITUMINOUS COATING)  
 PROVIDE ASPHALTIC WATERPROOFING ALL AROUND INSIDE AND OUT WHERE ELASTOMETRIC SHEET WATERPROOFING NOT REQUIRED OR EXISTING



## SLEEVE AND SEAL ASSEMBLY DETAIL (WITH WATERPROOFING MEMBRANE)

1  
 A1.01 SCALE: NO SCALE

<p><b>Detail Title:</b>          Sleeve and Seal Assembly Detail          With Waterproofing Membrane</p>	<p><b>Detail No.:</b> 33 05 13 - 06  <b>Scale:</b> N.T.S.  <b>Date:</b> October 2020</p>	<p>Facilities, Planning &amp; Capital Programs          Standard Detail</p>	
---	--	---	--