

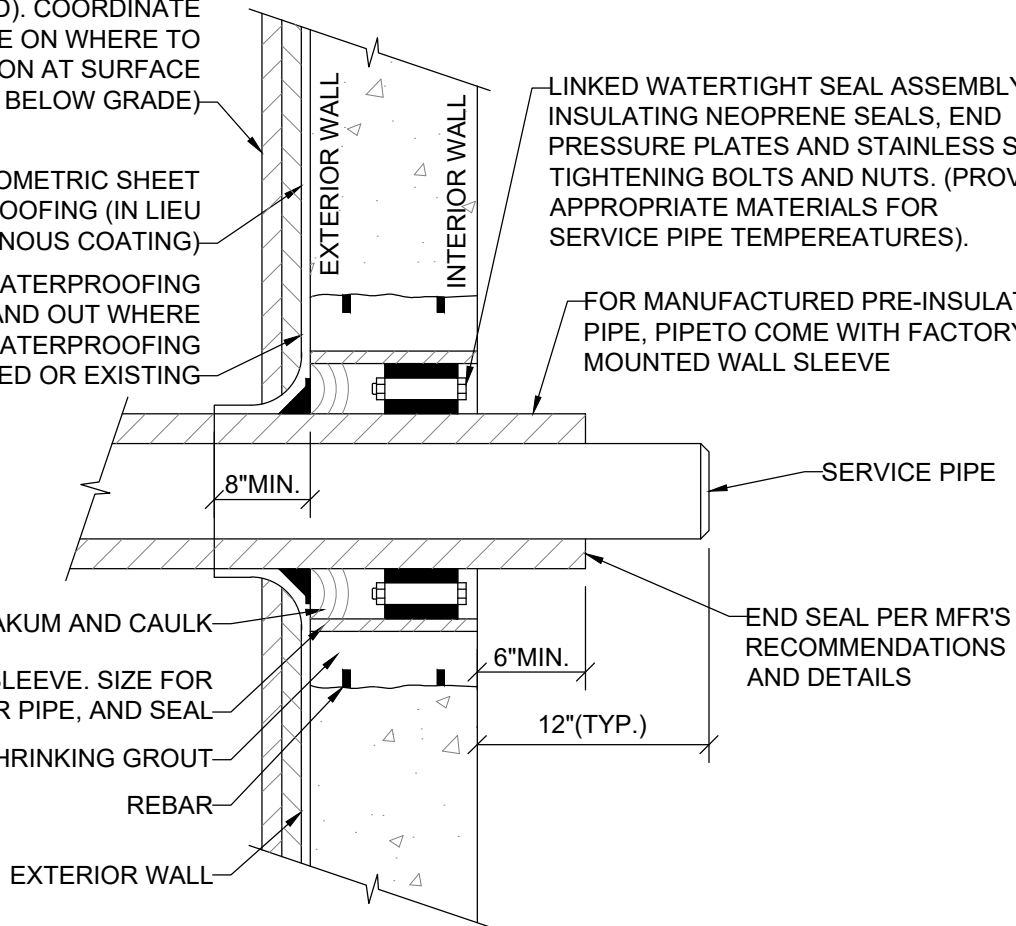
(AS DICTATED ON PROJECT-BY-PROJECT BASIS) DOUBLE LAYER (4") OF 2" RIDGID FOAM BOARD, NON OVERLAPPING SEAMS. INSULATION TO ALSO BE ADDED UNDER SLAB (BELOW SLAB RATED). COORDINATE WITH UNL LANDSCAPE ON WHERE TO TERMINATE INSULATION AT SURFACE (DEFAULT IS 6" BELOW GRADE)

ELASTOMETRIC SHEET WATERPROOFING (IN LIEU OF BITUMINOUS COATING)

PROVIDE ASPHALTIC WATERPROOFING ALL AROUND INSIDE AND OUT WHERE ELASTOMETRIC SHEET WATERPROOFING NOT REQUIRED OR EXISTING

LINKED WATERTIGHT SEAL ASSEMBLY WITH INSULATING NEOPRENE SEALS, END PRESSURE PLATES AND STAINLESS STEEL TIGHTENING BOLTS AND NUTS. (PROVIDE APPROPRIATE MATERIALS FOR SERVICE PIPE TEMPERATURES).

FOR MANUFACTURED PRE-INSULATED PIPE, PIPE TO COME WITH FACTORY MOUNTED WALL SLEEVE



PACK WITH OAKUM AND CAULK

6 GAUGE STEEL SLEEVE. SIZE FOR SLEEVE, CARRIER PIPE, AND SEAL

NON-FERROUS, NON-SHRINKING GROUT

REBAR

EXTERIOR WALL


SERVICE PIPE

END SEAL PER MFR'S RECOMMENDATIONS AND DETAILS

SLEEVE AND SEAL ASSEMBLY DETAIL (WITH WATERPROOFING MEMBRANE)

1
A1.01

SCALE: NO SCALE

<p>Detail Title: Sleeve and Seal Assembly Detail With Waterproofing Membrane</p>	<p>Detail No.: 33 05 13 - 06 Scale: N.T.S. Date: October 2020</p>	<p>Facilities Planning & Construction Standard Detail</p>	
------------------------------------------------------------------------------------------	---------------------------------------------------------------------------	-------------------------------------------------------------------	---------------------------------------------------------------------------------------