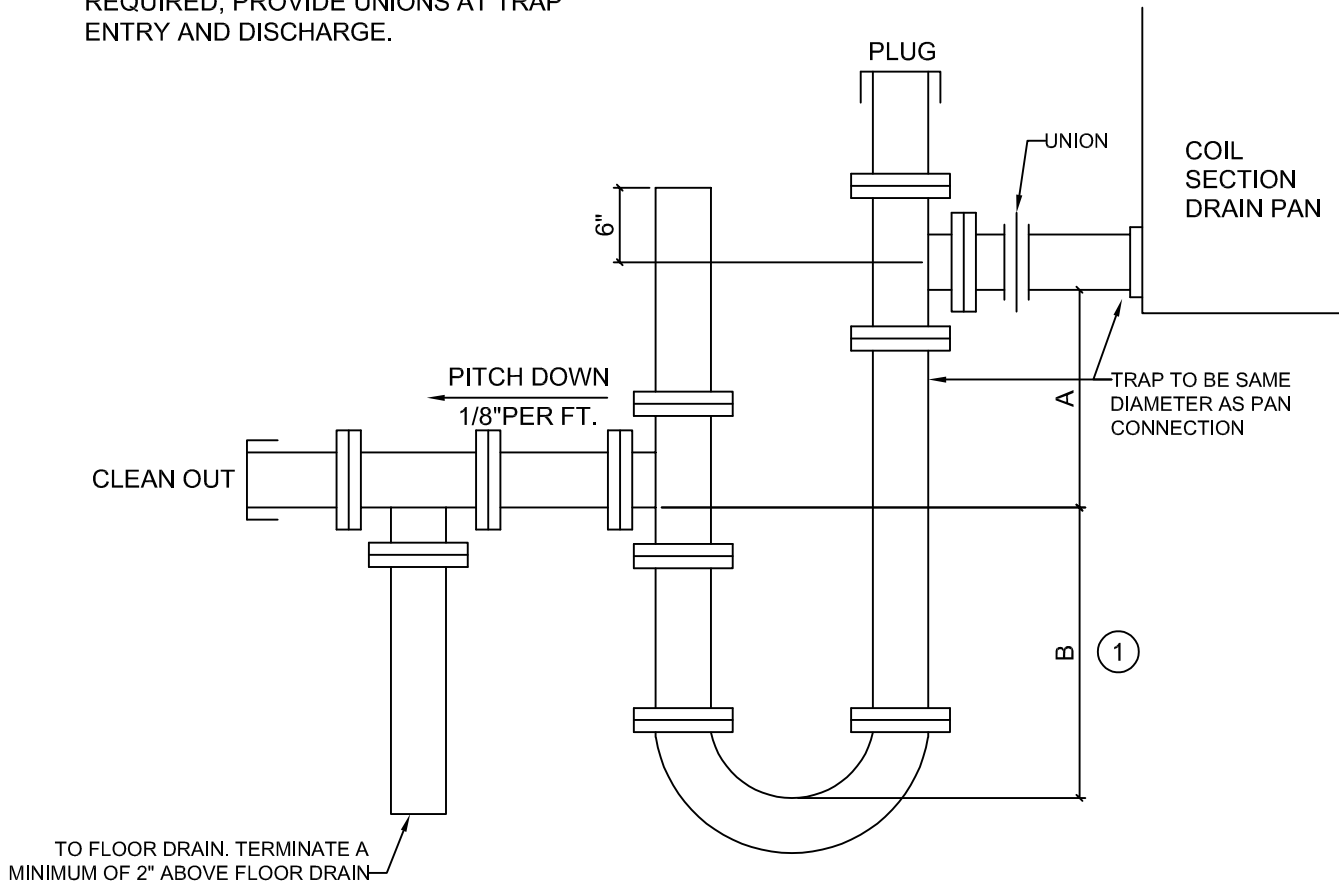


KEY NOTES

1. CORE DRILL, SLEEVE AND GROUT TRAP AT FLOOR AS REQUIRED TO ACHIEVE "B" DIMENSION. IF FLOOR CORE DRILL IS REQUIRED, PROVIDE UNIONS AT TRAP ENTRY AND DISCHARGE.



UPSTREAM OF FAN (DRAW-THRU AHU)

"A" = FAN INLET STATIC PRESSURE (IN W.C.) + 1"

"B" = A/2 (MINIMUM)

DOWNSTREAM OF FAN (BLOW-THRU AHU)

"A" = 1/2" (MINIMUM)

"B" = FAN OUTLET STATIC PRESSURE (IN W.C.) + 1/2"

1 **COOLING COIL CONDENSATE TRAP**
 M1.01 SCALE: NO SCALE

Detail Title: COOLING COIL CONDENSATE TRAP	Detail No.: 23 21 00 - 04	Facilities, Planning & Capital Programs Standard Detail	
	Scale: N.T.S.		
	Date: April 2020		