

**AGENDA**  
**THE BOARD OF REGENTS**  
**OF THE UNIVERSITY OF NEBRASKA**  
**Varner Hall**  
**Saturday, February 28, 2004**  
**8:30 a.m.**

- I. CALL TO ORDER
- II. ROLL CALL
- III. APPROVAL OF MINUTES AND RATIFICATION OF ACTIONS TAKEN ON JANUARY 17, 2004
- IV. KUDOS AND RESOLUTIONS
- V. STRATEGIC OR POLICY ISSUES: COOPERATIVE EXTENSION EDUCATION
- VI. HEARINGS
- VII. PUBLIC COMMENT

The Standing Rules of the Board provide that any person may appear and address the Board of Regents on any item on the agenda for this meeting. Each person will be given up to five minutes to make his or her remarks.

- VIII. COMMITTEE REPORTS AND APPROPRIATE ACTION
  - IX. UNIVERSITY CONSENT AGENDA
    - A. ACADEMIC AFFAIRS
    - B. BUSINESS AFFAIRS
  - X. UNIVERSITY ADMINISTRATIVE AGENDA
    - A. ACADEMIC AFFAIRS
    - B. BUSINESS AFFAIRS
    - C. FOR INFORMATION ONLY
    - D. REPORTS
  - XI. ADDITIONAL BUSINESS
- CLOSED SESSION

**IX. UNIVERSITY CONSENT AGENDA**

**A. ACADEMIC AFFAIRS**

1. President's Personnel Recommendations. Addendum IX-A-1
2. Approve the Awards of Honorary Degrees for the 2004 commencement ceremonies. Addendum IX-A-2
3. Approve the establishment of the Nebraska Center on Research for Children, Youth, Families and Schools at the University of Nebraska-Lincoln. Addendum IX-A-3
4. Approve the requests for outside employment at the University of Nebraska-Lincoln. Addendum IX-A-4
5. Approve the request for outside employment at the University of Nebraska Medical Center. Addendum IX-A-5

**B. BUSINESS AFFAIRS**

University of Nebraska Medical Center

1. Approve the purchase and installation of Dental Chairs and Simulation Lab Equipment at the UNMC College of Dentistry and approve financing through the Master Lease Program. Addendum IX-B-1

President's Personnel Recommendations  
Meeting Date: February 28, 2004

University of Nebraska at Kearney

New Appointment

Finnie A. Murray, Professor of Biology (Continuous), Senior Vice Chancellor for Academic Affairs and Student Life (Special); effective 06/01/04, salary \$135,000 FY, 1.00 FTE.

Leaves of Absence\*\*\*

University of Nebraska at Omaha

Leave of Absence\*\*\*

Adjustments

John Christensen, Vice Chancellor (Special), Academic and Student Affairs and Associate Professor (Continuous), Special Education and Communication Disorders; effective 02/01/04, salary \$170,000 FY (includes \$15,000 administrative stipend), 1.00 FTE. Change title from Interim Vice Chancellor to Vice Chancellor and salary from \$130,000 (includes \$20,194 administrative stipend).

Louis G. Pol, John Becker Endowed Dean (Special) College of Business Administration and Professor (Continuous) Marketing/Management; effective 03/01/04, \$175,000 FY (includes \$10,000 deanship stipend), 1.00 FTE. Change title from Interim Dean to Dean and salary from \$162,604 (includes \$10,000 administrative stipend and \$5,000 professorship stipend). Delete professorship appointment.

\*\*\*Members of the public and news media may obtain a copy of the item with the Leaves of Absences in the Office of the Corporation Secretary, University of Nebraska, 3835 Holdrege Street, Lincoln, NE 68583, between the hours of 8:00 a.m. and 5:00 p.m., Monday through Friday, except university holidays.

TO: The Board of Regents  
Academic Affairs

MEETING DATE: February 28, 2004

SUBJECT: Honorary Degrees

RECOMMENDED ACTION: Approve the awards of Honorary Degrees for the 2004 commencement ceremonies.

PREVIOUS ACTION: December 9, 2000 - The Board of Regents approved the current policy for Honorary Degrees, found in the *University of Nebraska Board of Regents Policies* under RP-1.5.1 Honorary Degrees.

EXPLANATION: None.

SPONSORS: Harvey Perlman, Chancellor  
University of Nebraska-Lincoln  
  
Nancy Belck, Chancellor  
University of Nebraska at Omaha  
  
Harold M. Maurer, M.D., Chancellor  
University of Nebraska Medical Center  
  
Douglas A. Kristensen, Chancellor  
University of Nebraska at Kearney

APPROVAL: \_\_\_\_\_  
L. Dennis Smith  
President

DATE: February 5, 2004

TO: The Board of Regents  
Academic Affairs

MEETING DATE: February 28, 2004

SUBJECT: Establishment of the Nebraska Center on Research for Children, Youth, Families and Schools (CYFS) at the University of Nebraska-Lincoln

RECOMMENDED ACTION: Approve the establishment of the Nebraska Center on Research for Children, Youth, Families and Schools at the University of Nebraska-Lincoln.

PREVIOUS ACTION: None

EXPLANATION  
The Nebraska Center on Research for Children, Youth, Families and Schools will serve as a catalyst for cutting-edge interdisciplinary research and will facilitate partnerships among faculty focusing on children, youth, families and schools, and their dynamic interrelationships.

The goal of the Nebraska Center on Research for CYFS is to become a nationally recognized center of excellence in research related to children and youth, and the multiple interrelated contexts in which they function. The center will realize this goal through collaborative research teams, building capacity by recruiting new members and mentoring junior faculty and graduate students, increasing grant competitiveness, and the expansion of research networks and visibility.

By bringing together the best investigators in these areas and drawing together resources and expertise, the Center will become a centerpiece for research excellence in Nebraska, benefitting academic programs at the University of Nebraska-Lincoln and surrounding Nebraska institutions.

SOURCE OF FUNDS: Programs of Excellence funding for a five year period (2003/2004 through 2007/2008.) No additional state funding will be sought to support the Center. Additional federal funding from the National Institutes of Health and other agencies will continue to support the Center.

SUPPORT FOR PROGRAM: The University of Nebraska-Lincoln is strongly committed to the development of the Center. The proposal for the Nebraska Center on Research for Children, Youth, Families and Schools was unanimously approved by UNL's Academic Planning Committee at its December 10, 2003 meeting.

SPONSOR: Prem Paul  
Vice Chancellor for Research  
  
David Brinkerhoff  
Interim Senior Vice Chancellor for Academic Affairs

APPROVAL: \_\_\_\_\_  
Harvey Perlman, Chancellor  
University of Nebraska-Lincoln

DATE: February 5, 2004

Proposal for:  
**Nebraska Center on Research for  
Children, Youth, Families and Schools**

Submitted by:

Prem S. Paul, D.V.M., Ph.D.  
Vice Chancellor for Research, UNL

Richard Edwards, Ph.D.  
Senior Vice Chancellor for Academic Affairs, UNL

Harvey Perlman, Chancellor  
University of Nebraska-Lincoln

**OVERVIEW, GOALS, AND OBJECTIVES.** The Nebraska Center on Research for Children, Youth, Families and Schools (CYFS) is a recently established program of excellence that promotes interdisciplinary research partnerships among faculty from multiple colleges and departments with research programs focused on children, youth, families and schools, and their dynamic interrelationships. Its mission is to improve, through cutting edge research, our understanding of optimal ways that parents, teachers and other service providers in home, school, and community contexts, can promote the intellectual, socioemotional, physical, and behavioral adjustment of children and youth, and to broadly disseminate this information to relevant constituencies.

The long-term goal of the Nebraska Center on Research for CYFS is to become a nationally recognized center of excellence in research related to children and youth and the multiple interrelated contexts in which they function (i.e., families, schools, communities). Its central objectives are to (a) enhance the scope, quality and prominence of UNL's research related to children, youth, families, and schools; (b) create, nurture, and develop an interdisciplinary academic environment that will foster new basic and applied research in all areas related to children, youth, families and schools; and (c) allow UNL to achieve national prominence. These objectives will be accomplished by bringing together the best investigators in these areas who will conduct basic and applied research that will inform the design, implementation, and evaluation of exemplary, evidence-based prevention and intervention programs in field settings. By drawing together resources and expertise, the Center will become a centerpiece for research excellence in Nebraska, benefiting academic programs at UNL and surrounding Nebraska institutions.

The Center will serve as a catalyst for cutting edge, multidisciplinary research and will achieve its goal by: (1) facilitating the development of multidisciplinary collaborative research teams that can author joint publications and compete for large scale grants; (2) building capacity by recruiting new members, providing mentors for junior faculty, and training graduate students; (3) increasing grant competitiveness by providing support in proposal development, research methodology, and grant administration; and (4) expanding research networks, disseminating research findings, and increasing visibility, by providing opportunities for interaction with other researchers nationally and internationally and by using web-based and traditional strategies for the dissemination of information about the Center, its activities, and research programs.

**NEED FOR THE CENTER/BENEFITS TO THE STATE AND THE UNIVERSITY.**

Children, youth, families, and schools face increasingly complex challenges in the 21<sup>st</sup> century, placing many children and youth at risk for developing behavioral, emotional, health, and academic problems. The systems and settings in which children and youth reside (in particular, homes, schools, early childhood settings), and their interconnections, deeply affect their ability to learn, grow, and develop. Research on children, youth, families and schools lies at the center of a growing national and international concern about the human condition. This complex type of research requires an understanding of individual development and learning processes but also the contexts (families, schools, communities) within which children reside. These complex issues have led to an increase in federal funding for research in these domains. There are several new funding programs that represent interagency initiatives across the National Institutes of Health, Department of Education, Department of Health and Human Services, and in some cases, the National Science Foundation.

Research on CYFS is closely tied to many disciplines, including educational and school psychology; developmental psychology; family and consumer sciences; sociology; special education; teaching, learning, and teacher education; health sciences; communication studies; and a host of others. Bringing together researchers across these and related disciplines represents a unique opportunity to build on strengths across campus and to focus energies on cross-cutting research. A Center structure will allow us to capitalize on the existing strengths of a strong and dynamic faculty. Furthermore, the coordination of multiple exemplary research programs under a common research umbrella will create a synergy leading to new and exciting research initiatives. Linking these diverse researchers builds a much stronger program and enables the kind of collaboration that is necessary for research related to children, youth, families and schools.

The ability of Nebraska researchers to attract funding and generate research programs in this area is demonstrated by recent awards of a \$5 million NIH research grant on child learning and school readiness, and an \$800,000 Department of Education grant across UNL and UNMC on pediatric school services. Additionally, between 2000 and 2003, researchers associated with the Center have brought in approximately \$11.7 million in external research funding.

The Center's interdisciplinary research will contribute to basic knowledge related to children, youth, families and schools, including the identification and advancement of evidence based models of prevention and intervention service. Collaborative research conducted in the Center also will influence positively the lives of Nebraska youth, families, and the agencies that serve them (e.g., schools, community agencies), creating a link between basic and applied research and providing models for intervention and services. It will attract additional visibility to research programs at UNL, thereby assisting in the recruitment and retention of students, faculty, researchers, and local constituencies.

**SUPPORT OF UNIVERSITY/ACADEMIC UNIT GOALS AND OBJECTIVES.** The goals and purposes of the Center on CYFS are closely aligned with those of the University described in "A 2020 Vision: The Future of Research and Graduate Education at UNL." According to this document, "The emphasis of basic and applied research programs is on quality, with several highly visible national centers and pre-eminence in selected areas in the sciences, humanities, social sciences, and professions." The Center on CYFS will be one of these centers. Also articulated in the 2020 Vision, "UNL [will] significantly increase competitive grant funding, both through increased numbers of grants as well as increased average size of grants." A major objective of the Center on CYFS is to mentor and support young and mid-career researchers to increase their competitiveness for external funding. A COBRE grant is being developed currently with several CYFS faculty, and will represent a large competitive NIH grant drawing on the strengths we have at this institution.

Also consistent with the 2020 Vision, we expect to "grow new research resources, through innovative and synergistic research combinations." Indeed, this lies at the heart of the interdisciplinary synergy already present among faculty, departments, and colleges associated with the Center.

**DESCRIPTION OF THE CENTER AND ITS PROGRAMS.** The Nebraska Center on Research for Children, Youth, Families and Schools is a new unit that has focused dually on establishing its



administrative and programmatic infrastructure and assembling a critical mass of researchers needed to build a research center of national and international prominence. The Center on CYFS brings together prominent and developing researchers and provides the infrastructure that enables these researchers to take full advantage of core resources and the benefits of intellectual and technical collaboration to produce cutting-edge research. Recent funding from NIH will enable the Center to invest in areas of research with national priority. Likewise, the resources, mentoring, and technical expertise that the Center provides will establish junior researchers as independent investigators, strengthen existing programs and develop promising new areas of research.

Some accomplishments of the Center to date are summarized below.

**Faculty research affiliates.** The Center currently includes over 50 faculty members from UNL, UNMC, and UNO. These faculty members come from three colleges and 9 departments including Educational Psychology; Family and Consumer Sciences; Psychology; Special Education; Sociology; Communication Sciences; Teaching, Learning, and Teacher Education; and others. The group includes both junior and senior faculty. Current faculty already demonstrate a track record for excellence in research, as illustrated by successful large-scale extramural grant initiatives supported by agencies such as the National Institutes of Health, National Science Foundation, and US Department of Education. As previously indicated, researchers associated with the Center secured approximately \$11.7 million from 2000 – 2003. This record enables the Center to be positioned to compete effectively for center grants and other large scale funding mechanisms.

**Research strengths.** A retreat was held in Fall, 2002, during which a set of interdisciplinary research strengths were identified. These core strengths were solidified through regular follow up meetings throughout 2002-2003. The common strengths identified at the retreat for defining initial Center research activities are: (a) Early Childhood Education and Intervention; (b) Academic Interventions and Learning; and (c) Youth Risk Factors and Behaviors. Working groups have formed around each of these themes. The groups have continued to meet after the retreat to discuss their overlapping interests, refine their research ideas, and in some cases, develop and submit grant proposals. In 2002-2003, a conservative estimate of \$13 million in federal grants were submitted by Center faculty as part of their affiliation with the Center; \$5.8 million was awarded to UNL.

**Faculty mentoring.** An important function of the Center is the mentoring that occurs by senior faculty, who work with junior researchers and assist in a variety of ways through advice, active guidance, and feedback on research ideas and proposals. Faculty mentors help junior faculty build their capacity to write competitive proposals informally by reviewing their proposals, and also serve as formal mentors for career awards, K01s, and other federal or foundation programs that support junior researchers.

**Faculty enhancement and support structures.** Enhancement of faculty affiliates' research at all levels is possible through targeted grant competitions, technical assistance, web-based dissemination of research, clerical and managerial support, grant writing incentives, and other enhancement opportunities.

**Development of CYFS programs.** To further enhance the research infrastructure and promote interdisciplinary collaboration among NU researchers, and between UNL researchers and colleagues at other Research I institutions, several other programs are being planned and developed. Among these are the following:

1. *A national symposium will be sponsored every two years, bringing in nationally renowned researchers to present their research programs and to meet Center faculty and graduate students.*
2. *A visiting scholars program will be initiated, in which researchers are invited to spend sabbatical time with the Center, collaborating with faculty and participating in Center activities.*
3. *A summer institute will be held for researchers at all levels, alternating with a summer workshop for young scholars interested in children, youth, families and schools. The institute will focus on current topics such as new methodological techniques, approaches to studying diverse populations, translational research (which bridges the gap between basic research and practice), and policy implications.*
4. *A website will be created providing information on the Center, its activities, and research projects, as well as presentations and publications resulting from Center projects. Faculty expertise, collaborations, and accomplishments will be included as a means of increasing visibility of the Center's and Center faculty research strengths. Links will be set up to each faculty member's project webpage and departmental webpage. Center affiliates will be encouraged to cite the Center in the Community of Science profiles.*

**ORGANIZATIONAL STRUCTURE.** The organizational capacity of the Center is established around three main structural tiers: faculty affiliates, administrative/consultative, and support staff. An organizational chart for the Center infrastructure is attached.

**Faculty Affiliates.** The research mission of the Center will be realized most directly by the work of faculty affiliates working on *interdisciplinary collaborative research teams*, and as *reviewers and mentors*. The main research activities of the Center will be completed through the work of interdisciplinary research partnerships (i.e., teams). Among the many support activities to be integrated into the Center infrastructure is the establishment of Internal Review Panels, which will be comprised of successful UNL grant recipients. For each proposal submitted through the Center, a small group (consisting of 2-3 successful researchers) will be formed to serve as an ad hoc review panel. Likewise, senior mentors will be identified to encourage, advise, and assist junior researchers in developing their research programs and securing external funding.

**Research Associates.** Research Associates will be hired (e.g., Associate Research Professors; Post-doctoral Research Associates) to participate in on-going projects, help write proposals and manage grants, promote the scholarly interdisciplinary work of the Center, and increase productivity and visibility in research activities. These individuals will

be hired on grant supported projects. One such individual has already been hired and added to the Center organizational structure.

**Administrative Core.** Coordination and leadership of Center activities will be the responsibility of a **Center Director**. The Director (S. Sheridan) is responsible for start-up and long-term expansion and maintenance activities. The functions of the Director are to provide leadership in establishing and furthering the vision and mission of the Center. The Director helps identify and support the activities of the research teams, convenes and meets with the steering committee and advisory board, oversees Center staff, promotes the activities of the Center through communications within and outside of the Center, evaluates proposals in early stages to assure goodness of fit with Center goals and mission, and assists in the writing of Center grant proposals to ensure a financial base of support.

An internal **executive steering committee** has been established, and will be maintained and expanded as needed. The executive steering committee is an internal group that has administrative expertise. It includes participating College Deans (i.e., CEHS, A&S), a Director from a currently established University Center (CCFL), and a faculty representative.

An **external advisory board** will be identified to provide consultation and direction for achieving the overarching research mission of the Center. A prominent group of external researchers and successful grant writers will be established to serve in an advisory capacity to the steering committee.

Organizational functions will be carried out by a team of **Center support staff** to include an administrative assistant, a budget/grant specialist, a statistical consultant, and a technical/web consultant. Initially, these services will be provided by contracted support staff in relation to CEHS functions as appropriate. Over time, staff will be hired at full-time equivalents and offices established to support these functions (i.e., Offices of Business and Finance, Technical Services, and Grant Support).

**LONG TERM SUSTAINABILITY.** The best measure of the Center for CYFS success will be its ability to sustain its activities at the end of the PoE funding. Indeed, the overall goal of the Center is to become an independent, self-sustaining, internationally recognized center of excellence in research, with the concomitant cadre of productive researchers and high level of external funding.

If the Center has achieved its goals, we should generate significant funding through NIH R01 or other programs to support individual or collaborative research programs. We have already secured one large \$5 million grant from NIH and an \$800,000 grant from the US Department of Education. We expect to submit at least four more large proposals in the next four years. The Center on CYFS will also, in the next three years, attempt to obtain P01 program funding. To help sustain the core foundation and facilities of the Center, we plan to establish policies for returns of fiscal and administrative (F&A) costs for grants that are funded through the Center. These mechanisms will ensure that the Center will move forward to be self-sustaining in the future.

TO: The Board of Regents  
Academic Affairs

MEETING DATE: February 28, 2004

SUBJECT: Requests for Approval of Outside Employment

RECOMMENDED ACTION: Approval of the following requests to participate in activities outside the University in accordance with University policy as follows.

Robert W. Bielenberg, Research Associate Engineer, Midwest Roadside Safety Facility, to provide consulting services to state highway agencies and roadside safety companies.

Ronald K. Faller, Research Assistant Professor, Midwest Roadside Safety Facility, to provide consulting services to state highway agencies and roadside safety companies.

Jill Knox, Field Training Specialist, Center for Children, Family, and Law, to provide services to the Nebraska Department of Health and Human Services by conducting home studies to approve foster families.

Karla A. Polivka, Research Associate Engineer, Midwest Roadside Safety Facility, to provide consulting services to state highway agencies and roadside safety companies.

John Rohde, Associate Professor, Civil Engineering, to provide consulting services to state highway agencies and roadside safety companies.

Dean Sicking, Professor, Civil Engineering, to provide consulting services to state highway agencies and roadside safety companies.

PREVIOUS ACTION: None

EXPLANATION: The request by Robert W. Bielenberg, Ronald K. Faller, Jill Knox, Karla A. Polivka, John Rohde, and Dean Sicking, for approval of outside activity is in accordance with Section 3.4.5(d) of the *Bylaws of the Board of Regents of the University of Nebraska* specifying that University employees must have the approval of the Board of Regents if they are providing professional services for remuneration to a department or agency of state government.

Robert W. Bielenberg is requesting permission of the Board of Regents to provide consulting services to state highway agencies and private companies in regard to roadside and highway safety issues and problems. He may also be asked to provide expert witness support to the Nebraska State Attorney General's Office regarding accident reconstruction. These duties will be performed beginning February 29, 2004 through January 31, 2005. These duties will not interfere with Robert W. Bielenberg's performance of his University duties and responsibilities.

Ronald K. Faller is requesting permission of the Board of Regents to provide consulting services to state highway agencies and private companies in regard to roadside, highway, and motorsports related safety issues and problems. He may also be asked to provide expert witness support to the Nebraska State Attorney General's Office regarding the same issues. These duties will be performed beginning February 29, 2004 through December, 2004. These duties will not interfere with Ronald K. Faller's performance of his University duties and responsibilities.

Jill Knox is requesting permission of the Board of Regents to provide home study services for the Nebraska Department of Health and Human Services. She will be conducting home studies to approve foster families for placement of abused and neglected children and/or children involved in the juvenile system. These duties will be performed beginning March, 1 2004 and will continue for a two year period. The number of cases vary each month with an estimation of 1-4 per month. These duties will not interfere with Jill Knox's performance of her University duties and responsibilities.

Karla A. Polivka is requesting permission of the Board of Regents to provide consulting services to state highway agencies and private companies in regard to roadside and highway safety issues and problems. She may also be asked to provide expert witness support to the Nebraska State Attorney General's Office regarding accident reconstruction. These duties will be performed beginning February 29, 2004 through January 31, 2005. These duties will not interfere with Karla A. Polivka's performance of her University duties and responsibilities.

John Rodhe is requesting permission of the Board of Regents to provide consulting services to state highway agencies and roadside safety companies with regard to design, construction, and repair of roadways and roadside features. The Attorney General may engage him to support the State of Nebraska in an expert witness role to defend the Nebraska Department of

Roads in tort liability cases. These duties will be performed beginning February 29, 2004 through December 31, 2004. These duties will not interfere with John Rohde's performance of his University duties and responsibilities.

Dean Sicking is requesting permission of the Board of Regents to provide consulting services to state highway agencies and roadside safety companies with regard to design, construction, and repair of roadways and roadside features. The Attorney General may engage him to support the State of Nebraska in an expert witness role to defend the Nebraska Department of Roads in tort liability cases. These duties will be performed beginning February 29, 2004 through December 31, 2004. These duties will not interfere with Dean Sicking's performance of his University duties and responsibilities.

SPONSOR:

David Brinkerhoff  
Interim Senior Vice Chancellor for Academic Affairs

APPROVAL:

---

Harvey Perlman, Chancellor  
University of Nebraska-Lincoln

DATE:

January 27, 2004

TO: The Board of Regents

COMMITTEE: Academic Affairs

MEETING DATE: February 28, 2004

SUBJECT: Requests for approval of outside employment.

RECOMMENDED ACTION: Request for approval of outside employment from the University of Nebraska Medical Center (UNMC) to participate in activities outside the University in accordance with University policy as follows:

**COLLEGE OF MEDICINE**

Carl B. Greiner, M.D., Professor and Assistant Dean for Clinical Affairs, to provide forensic services on a limited basis.

PREVIOUS ACTION: None.

EXPLANATION: This request for approval of outside activities is in accordance with Section 3.4.5 of the *Bylaws of the Board of Regents of the University of Nebraska* specifying that University employees (c) charging fees for work performed in University buildings and (d) providing professional services for remuneration to departments or agencies of state government, must have the approval of the Board of Regents.

Dr. Greiner is requesting permission of the Board of Regents to do a maximum of four forensic interviews for the calendar year (February - December) of 2004, typically lasting one to two hours in his office on the Nebraska Medical Center campus. He will provide his own materials for this work. In addition, Dr. Greiner is requesting that he be permitted to have up to six days during the calendar year (February - December 2004) to examine and testify for Nebraska courts. Requests from the courts are done at their discretion; he does not solicit nor request these assignments. Forensic practice provides an assessment or opinion regarding a client and no direct medical care is provided. Because of his background and training, Dr. Greiner has the experience to provide useful assessments to the court. Dr. Greiner will take personal vacation time when doing an assessment at the forensic facility or when testifying and the activities will be covered with his separate insurance coverage through Complete Equity Market and does not place any additional demand on his university malpractice coverage.

SPONSOR: Rubens J. Pamies, M.D.  
Vice Chancellor for Academic Affairs

APPROVAL: \_\_\_\_\_  
Harold M. Maurer, M.D., Chancellor  
University of Nebraska Medical Center

DATE: February 5, 2004

TO: The Board of Regents  
Business Affairs

MEETING DATE: February 28, 2004

SUBJECT: Dental Chair Replacement and Simulation Lab Equipment at the University of Nebraska Medical Center (UNMC) College of Dentistry.

RECOMMENDED ACTION: Approve the purchase and installation of Dental Chairs and Simulation Lab Equipment at the UNMC College of Dentistry and approve financing through the Master Lease Program.

PREVIOUS ACTION: April 26, 2003 - Student fees reported to the Board of Regents included a College of Dentistry Equipment Fund fee.

EXPLANATION: UNMC proposes to replace all 173 operatory chairs and add patient simulation equipment in the teaching clinics of the College of Dentistry.

Many of the existing dental chairs were installed with the construction of the College of Dentistry building in 1967. Some of the chairs were originally purchased used, and all chairs have since served well beyond their normally expected service life and are in need of replacement parts that are becoming harder to obtain. Chair maintenance has become increasingly frequent and disruptive to clinical functions. The proposed equipment purchase will also include new operatory lights, stools and utility delivery systems for each of the dental chair locations and casework replacement at about 25 chairs.

Equipment to simulate actual dental practice, consisting of simulated patient heads that mount on the dental chair headrest along with computer aided instructional devices, is proposed for 47 operatory positions in the existing clinic area along with associated casework.

This action would also allow the Vice President for Business & Finance to utilize the Master Lease Program to finance this purchase. The lease-financing is currently anticipated to be a seven year financing at a true interest cost (using current rate estimates) approximating 2.8%.

PROJECT COSTS: \$2,540,000

ON-GOING FISCAL IMPACT: None

SOURCE OF FUNDS: Master Lease Financing (Repayment through designated Student Fees)



SPONSORS:

Donald S. Leuenberger  
Vice Chancellor for Business & Finance

David E. Lechner  
Vice President for Business & Finance

APPROVAL:

---

Harold M. Maurer, M.D., Chancellor  
University of Nebraska Medical Center

DATE:

February 10, 2004

**X. UNIVERSITY ADMINISTRATIVE AGENDA**

**A. ACADEMIC AFFAIRS**

1. Approve Doctor of Audiology Degree at the University of Nebraska-Lincoln. Addendum X-A-1

**B. BUSINESS AFFAIRS**

University of Nebraska-Lincoln

1. Approve the conveyance of real property to the Department of Roads (DOR) for public right-of-way in conjunction with U.S. Highway 83 improvement project and accept the DOR appraised value of the subject tract within the West Central Research and Extension Center (WCREC) property, previously referred to as North Platte Station, south of North Platte, Nebraska. Addendum X-B-1
2. Approve the University of Nebraska-Lincoln Campus Identification Card (NCard) Banking Services License and related Banking Facilities Lease Agreements between UNL and Wells Fargo and Company effective March 1, 2004. Addendum X-B-2

TO: The Board of Regents  
Academic Affairs

MEETING DATE: February 28, 2004

SUBJECT: Professional Doctorate in Audiology (Au.D.)

RECOMMENDED ACTION: Approve Doctor of Audiology Degree at the University of Nebraska-Lincoln (UNL)

PREVIOUS ACTION: None

EXPLANATION: UNL proposes to offer a new professional degree (Au.D.) in Audiology and Hearing Science within the Department of Special Education and Communication Disorders. The Au.D. will satisfy a growing national movement in the training of audiologists to meet the changing accreditation and certification requirements that must be met by 2007. The Au.D. will replace the present Masters of Science degree and prepare students for professional careers in industry, academia, federal and state government, and private practice. The Au.D. will upgrade the curriculum available to graduate students, which is currently limited to the Master of Science degree. New elements of the Au.D. entry-level program include increased depth of education in some areas (balance disorders, hearing conservation) and added content (genetics of hearing loss, cochlear implantation, interoperative monitoring.) The new curriculum permits greater emphasis on the following: cultural competency, differential diagnosis, clinical decision making, health care deliver systems, lifelong learning and technology use in practice. The goal of the new certification/accreditation standards is to provide a professional education that prepares the audiologist to make independent decisions regarding patient management after entering practice at the doctoral level.

PROGRAM COSTS: Because the Au.D. degree will replace the current masters degree, additional budget needs are minor. The increased expenses of the proposed program total \$39,000 of ongoing expenses of which \$20,000 comes from the Barkley Trust and \$19,000 comes from reallocated college funds. In addition, the college will spend \$50,000 for one-time equipment purchases

PROGRAM SUPPORT: This proposal is presented to the Board of Regents with the unanimous approval of the UNL Academic Planning Committee, the support of the UNL Office of Graduate Studies, and the Council of Academic Officers.

SPONSORS:

Harvey Perlman  
Chancellor

David Brinkerhoff  
Interim Senior Vice Chancellor for Academic Affairs

APPROVAL:

---

Jay Noren  
Executive Vice President and Provost

DATE:

February 5, 2004

# **PROPOSED UNL AuD DEGREE**

## **EXECUTIVE SUMMARY**

Audiologists are autonomous professionals who identify, assess, and manage disorders of the auditory, balance, and other neural systems. Audiologists provide audiological (aural) rehabilitation to children and adults across the entire age span. Audiologists select, fit and dispense amplification systems such as hearing aids and related devices. Audiologists prevent hearing loss through the provision and fitting of hearing protective devices, consultation on the effects of noise on hearing, and consumer education. Audiologists are involved in auditory and related research pertinent to the prevention, identification, and management of hearing loss, tinnitus, and balance system dysfunction. Audiologists serve as expert witnesses in litigation related to their areas of expertise.

This is a proposal to create a professional degree (Au.D.) in the audiology section of the Department of Special Education and Communication Disorders (SECD). The proposal is an outgrowth of two primary developments in the field of audiology. First, the scope of practice of audiology has advanced beyond the level where adequately trained practitioners can be developed within the existing two-year Masters of Science program. Secondly, the professional credentialing agency (American Speech-Language-Hearing Association) has increased the curriculum for certification to four years beginning in 2007 and has established the doctoral degree as the entry-level degree for practice by the year 2012.

The faculty of SECD have concluded after an extended period of analysis that the interests of future audiology students and the audiology education mission of the University of Nebraska will be best served by the establishment of the professional doctorate in audiology.

This proposal describes the rationale for creation of a professional doctoral degree in Audiology and the designation of the four-year course of studies in audiology as a first professional degree program. The degree program includes extensive cooperative arrangements with Boys Town

National Research Hospital, the Veterans Administration Hospital and the University of Nebraska Medical Center

It is intended that this Au.D. degree be conceived in a similar fashion as the LLD, the MD, the JD, the DDS, the Pharm D degree and, the M.Arch. degrees. The current criterion used to distinguish between first-professional degrees and graduate degrees at the University of Nebraska is as follows:

A post-baccalaureate degree which is the first or minimum degree offered by the University of Nebraska that qualifies a person to stand for licensure in one of the recognized professions, and which is pursued, for all intents and purposes, exclusively by persons intending to seek licensure in that profession, is regarded as a first-professional degree. Any other post-baccalaureate degree is regarded as a graduate degree.

The foregoing criterion immediately identifies the MD, JD, M.Arch., and DDS degrees as first-professional degrees, and further identifies the MS in Nursing, the MS in Dentistry, the Ph.D. in Psychological and Cultural Studies (specialization in Audiology) as graduate degrees. Given these differences, the Au.D. is clearly a first-professional degree that will allow students to stand for licensure in audiology.

If this proposal is successful the Department will discontinue offering the M.S. degree in audiology substituting in its place the Au.D. degree. The department will continue to offer the Ph.D. in Psychological and Cultural Studies (specialization in Audiology) for those that seek a research emphasis and do not intend to stand for licensure in audiology.

**TABLE 1: PROJECTED INCREMENTAL PROGRAM EXPENSES**

STAFF	FY 2003		FY 2004		FY 2005		FY 2006		FY 2007	
	Year 1		Year 2		Year 3		Year 4		Year 5	
	FTE	Cost	FTE	Cost	FTE	Cost	FTE	Cost	FTE	Cost
Staffing: * Additional Faculty	0.50	32,000		0		0		0		0
Additional Non-Teaching Staff Administrative	0.0									
Professional	0.0									
Support	0.0									
Sub-total of Personnel Expenses	0.50	32,000								
Program Budget ** Normal Operating Expenses					0.0		0.0			
Equipment		7,000	0		0		0		0	
Facilities	0		0		0		0		0	
Additional Library Resources	0		0		0		0		0	
Additional Other Expenses	0		0		0		0		0	
One time Equipment Expense		50,000	0		0		0		0	
Sub-Total of Program Budget		89,000	0		0		0		0	
Total Proposed Program Expenses ***		<b>89,000</b>	0		0		0		0	

**\*This is an upgrade of an existing masters degree faculty member line that is paid out of the Barkley Trust (\$20 000) and adjunct faculty expense (\$12,000).**

**\*\*Note: The \$89,000 figure includes the one time equipment request. Without those items the total new incremental program expense would be \$39,000**

**TABLE 2: REVENUE SOURCES FOR PROJECTED INCREMENTAL EXPENSES**

<b><u>REVENUE</u></b>	FY 2003 _____ YEAR 1	FY 2004_____ YEAR 2	FY 2005_____ YEAR 3	FY 2006 ____ YEAR 4	FY 2007_____ YEAR 5
REALLOCATION OF EXISTING FUNDS*	69,000				
REQUIRED NEW PUBLIC FUNDS					
1. STATE FUNDS					
2. LOCAL FUNDS					
TUITION AND FEES REVENUES					
OTHER FUNDING					
1. Barkley Trust	20,000				
2.					
3.					
4.					
5.					
TOTAL REVENUE	89,000				

COMMENTS:

\* This figure includes \$7,000 for ongoing equipment expenses, \$50,000 in one-time equipment expense and \$12,000 in ongoing adjunct faculty expense.



TO: The Board of Regents  
Business Affairs

MEETING DATE: February 28, 2004

SUBJECT: Conveyance of real property to the Department of Roads (DOR) for public right-of-way in conjunction with U.S. Highway 83 improvement project.

RECOMMENDED ACTION: Approve the conveyance of real property to the Department of Roads (DOR) for public right-of-way in conjunction with U.S. Highway 83 improvement project and accept the DOR appraised value of the subject tract within the West Central Research and Extension Center (WCREC) property, previously referred to as North Platte Station, south of North Platte, Nebraska.

PREVIOUS ACTION: None

EXPLANATION: To accomplish the highway improvement project the DOR requires additional right-of-way from the WCREC property at the intersection of U.S. Highway 83 and State Farm Road.

The DOR will pay \$10,640 for two tracts of land representing 1.33 acres. The tracts consist of 1.28 acres in the North Half of the Northwest Quarter and .05 acres in the South Half of the Northwest Quarter, all within Section 21, Township 13 North, Range 30 West of the Sixth Principal Meridian, Lincoln County, Nebraska.

The DOR will pay an additional \$26,120 for temporary easements, administrative settlements and other construction costs (including tree damage, sod replacement and moving fences).

Acceptance of the DOR appraised value is requested. A map showing the proposed conveyance to the DOR of public right-of-way is attached.

Members of the public and the news media may obtain a copy of the proposed documents in the Office of the University Corporation Secretary, 3835 Holdrege Street, Lincoln, Nebraska 68583, between the hours of 8:00 a.m. and 5:00 p.m., Monday through Friday, except University holidays.

PROJECT COST: None

SOURCE OF FUNDS:

None

SPONSORS:

John C. Owens

Vice Chancellor for Agriculture & Natural Resources

Christine A. Jackson

Vice Chancellor for Business & Finance

APPROVAL:

---

Harvey Perlman, Chancellor  
University of Nebraska-Lincoln

DATE:

February 11, 2004

To North Platte



State Farm Road

Highway 83

To Lake Maloney



83-2(1025)  
ACT. US-83/356B  
LINCOLN  
61268  
3&4  
EXIST. ROW  
END L P-28(8)

TRACT 1  
THE BOARD OF REGENTS  
THE STATE OF NEBRASKA  
THE SENECA NEANWA &  
NANAWA ALL IN SEC. 21

175  
SEC. 21-T3M-R200

170

165

1/4 SEC. LINE

EXIST. CA PURCHASED UNDER PROJ. F-83-2(103)

EXIST. PROJ. F-83-2(103)

EXIST. PROJ. F-83-2(103)

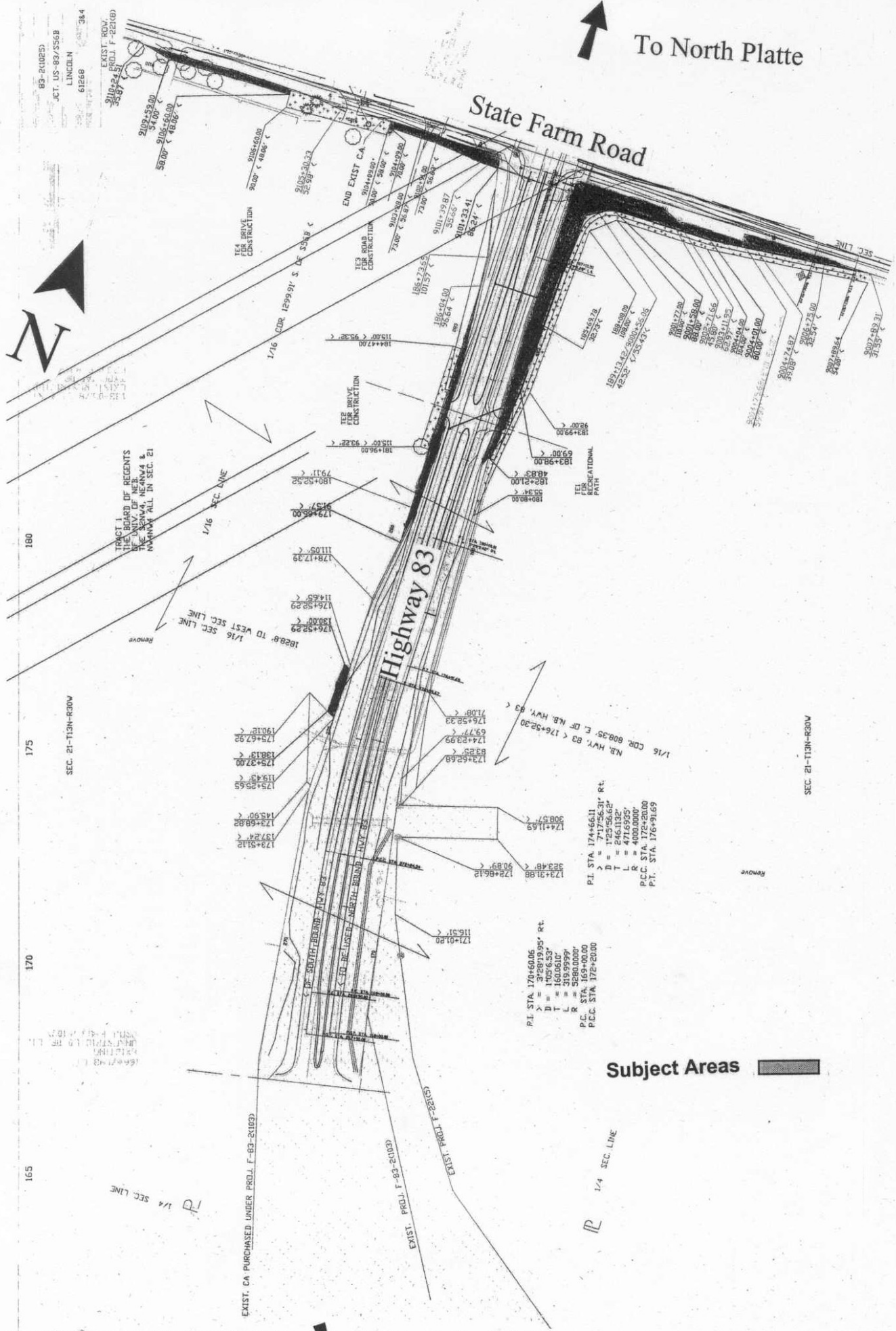
P.T. STA. 170+60.06  
X = 3'2819.95' Rt.  
D = 1'006.63'  
L = 16.00'  
L = 519.9999'  
L = 5280.0000'  
P.C. STA. 169+00.00  
P.C.C. STA. 172+20.00  
P.T. STA. 176+80.05

P.T. STA. 174+60.11  
D = 1724.5662'  
T = 246.1132'  
L = 471.6595'  
R = 4000.0000'  
P.C. STA. 172+20.00  
P.T. STA. 176+80.05

Subject Areas

REMOVE

SEC. 21-T3M-R200



TO: The Board of Regents  
Business Affairs

MEETING DATE: February 28, 2004

SUBJECT: University of Nebraska-Lincoln Campus Identification Card Banking Services License and related Banking Facilities Lease Agreements

RECOMMENDED ACTION: Approve the University of Nebraska-Lincoln (UNL) Campus Identification Card (NCard) Banking Services License and related Banking Facilities Lease Agreements between UNL and Wells Fargo and Company effective March 1, 2004.

PREVIOUS ACTION: None

EXPLANATION: The NCard serves as UNL's identification card for approximately 29,000 faculty, staff and students and has been in existence since 1985. It also permits on-campus purchases, access to campus recreation facilities, sports events, residence hall dining facilities, and other buildings/ laboratories, library circulation services, and confirmation of student status and eligibility for student benefits and activities.

The License Agreement, which was awarded following a Request for Proposals, provides that Wells Fargo and Company, effective March 1, 2004, shall be granted an exclusive license to 1) provide cardholders an opportunity to open a Wells Fargo depository account to be affiliated with their new NCard, 2) to provide cardholders who open such an account the capability of using their NCard as an ATM Card, and as a check card for off-campus purchases, and 3) to place various Bank logos alongside University logos on a newly designed NCard. All off-campus purchases will be charged against the deposited funds in the cardholder's bank account; no "credit card" purchases will be available with the NCard.

In return for this license, Wells Fargo and Company shall pay UNL:

- \$250,000 upon execution of the Agreement
- \$300,000 at the conclusion of each contract year
- \$15 per account if more than 15,000 UNL faculty, staff and students maintain Wells Fargo Bank accounts in a contract year.

The Lease Agreement also grants Wells Fargo and Company the right to operate a branch banking facility adjacent to the south entrance of the City Campus Student Union and the right to install and operate five ATMs on the UNL campus. Terms of the Lease Agreement provide that Wells Fargo and Company will pay a minimum of \$17,201 per year for the branch bank space (including utilities and custodial services) and a monthly amount for each ATM location that varies by utilization.

The University has the right to extend these agreements beyond the original eight-year term for three additional one-year increments.

Members of the public and the news media may obtain a copy of the proposed agreements in the Office of the University Corporation Secretary, 3835 Holdrege Street, Lincoln, Nebraska 68583, between the hours of 8:00 a.m. and 5:00 p.m., Monday through Friday, except University holidays.

PROJECT COST: None

SOURCE OF FUNDS: None

SPONSORS: James V. Griesen  
Vice Chancellor for Student Affairs

Christine A. Jackson  
Vice Chancellor for Business & Finance

APPROVAL: \_\_\_\_\_  
Harvey Perlman, Chancellor  
University of Nebraska-Lincoln

DATE: February 4, 2004

**C. FOR INFORMATION ONLY**

None.

## **D. REPORTS**

1. Financial Statements and related auditors' reports for the University of Nebraska for the year ended June 30, 2003. Addendum X-D-1
2. Single Audit of Federal Funds under the OMB Circular A-133 and related auditors' reports for the year ended June 30, 2003. Addendum X-D-2
3. Financial statements and auditors' reports for University of Nebraska's bond issues for the year ended June 30, 2003. Addendum X-D-3
4. Letter of Recommendations for the year ended June 30, 2003. Addendum X-D-4
5. Management's Response to Letter of Recommendations. Addendum X-D-5
6. Financial statements and related auditors' reports for the University Dental Associates for the years ended June 30, 2003 and 2002. Addendum X-D-6
7. Financial statements and related auditors' reports for the University Medical Associates for the years ended June 30, 2003 and 2002. Addendum X-D-7
8. Spring 2004 Headcount Enrollment and Student Credit Hour Reports. Addendum X-D-8
9. Quarterly Personnel Report for the period October through December 2003. Addendum X-D-9
10. Status of Capital Projects exceeding \$2 million as of December 31, 2003. Addendum X-D-10
11. Othmer-Topp Endowment Fund, second priority uses, for the year ended December 31, 2003. Addendum X-D-11
12. Gifts, Grants, Contracts and Bequests for the quarter ended December 31, 2003. Addendum X-D-12
13. Bids and Contracts for the period ended February 5, 2004. Addendum X-D-13
14. Semiannual report of licenses for the period ended December 31, 2003. Addendum X-D-14
15. Schematic Design Report for the Renovation of the University of Nebraska-Lincoln 1700 Y Street Building for Printing Services. Addendum X-D-15
16. Design Development Report for Student Apartments - 38th Avenue and Jackson Street at the University of Nebraska Medical Center. Addendum X-D-16

TO: The Board of Regents  
Business Affairs

MEETING DATE: February 28, 2004

SUBJECT: Financial Statements and related auditors' reports for the University of Nebraska for the year ended June 30, 2003.

RECOMMENDED ACTION: Report.

PREVIOUS ACTION: None

EXPLANATION: Deloitte & Touche LLP, the audit firm engaged by the State Auditor of Public Accounts and the University, has delivered their independent auditors' report covering the attached financial statements of the University of Nebraska for the year ended June 30, 2003. As required, Deloitte & Touche LLP, has provided the subject documents to the Auditor of Public Accounts.

This is the 31<sup>st</sup> consecutive year, since the inception of the external audit program, that the auditors have expressed an unqualified opinion on the University's financial statements.

The Business & Finance departments of each campus are to be commended for their efforts in working with the auditors to complete the report and for continuing to provide excellent financial leadership during the past year.

Members of the public and news media may obtain a copy of the audit in the Offices of the University Corporation Secretary and the Vice President for Business & Finance, 3835 Holdrege Street, Lincoln, Nebraska 68583, between the hours of 8:00 a.m. and 5:00 p.m., Monday through Friday, except University holidays.

PROJECT COST: None

SOURCE OF FUNDS: None

SPONSOR: Keith L. Lauber  
Director of University Accounting

APPROVAL: \_\_\_\_\_  
David E. Lechner  
Vice President for Business & Finance

DATE: February 5, 2004



TO: The Board of Regents  
Business Affairs

MEETING DATE: February 28, 2004

SUBJECT: Single Audit of Federal Funds under the OMB Circular A-133 and related auditors' reports for the year ended June 30, 2003.

RECOMMENDED ACTION: Report.

PREVIOUS ACTION: None.

EXPLANATION: As a recipient of federal grants and contracts and as required by federal law, the University of Nebraska is required to undergo an annual "single audit" dealing with compliance matters spelled out by regulations and/or stipulations of the particular contract/grant or by the granting agency. This audit is in addition to the required financial audit.

The University's auditor, Deloitte & Touche LLP, has performed the single audit for the year ending June 30, 2003. The audit was conducted in accordance with generally accepted accounting standards, Government Auditing Standards, issued by the Comptroller General of the United States, and the provisions of Office of Management and Budget Circular A-133, Audits of States, Local Governments, and Non-Profit Organizations.

There were no material weaknesses or deficiency findings with respect to internal control and compliance with Federal Program Requirements.

Members of the public and news media may obtain a copy of the audit in the Offices of the University Corporation Secretary and the Vice President for Business & Finance, 3835 Holdrege Street, Lincoln, Nebraska 68583, between the hours of 8:00 a.m. and 5:00 p.m., Monday through Friday, except University holidays.

PROJECT COST: None

SOURCE OF FUNDS: None

SPONSOR: Keith L. Lauber  
Director of University Accounting

APPROVAL: \_\_\_\_\_  
David E. Lechner  
Vice President for Business & Finance

DATE: February 5, 2004

TO: The Board of Regents  
Business Affairs

MEETING DATE: February 28, 2004

SUBJECT: Financial Statements and related auditors' reports for the University of Nebraska's bond issues for the year ended June 30, 2003, as listed below:

- a. Master Trust Indenture Bond Funds.
- b. University of Nebraska Revenue Refunding Bonds, Series 1992 (University of Nebraska Medical Center Student Housing Project).
- c. University of Nebraska at Kearney Student Fees and Facilities Revenue Bonds under the June 15, 1966 Resolution and Supplemental Resolutions.

RECOMMENDED ACTION: Report

EXPLANATION: Pursuant to Authorizing Resolutions, the subject financial statements have been prepared for the purpose of keeping the Board, the Bond Trustee and the Bondholders informed on the financial status of the revenue bonds and related facilities.

The audit firm, Deloitte & Touche LLP, issued unqualified opinions that the statements represent fairly the financial position of the bond funds. The minimum debt service requirements were met for each of the bond issues.

Members of the public and news media may obtain a copy of the proposed agreement in the Offices of the University Corporation Secretary and the Vice President for Business & Finance, 3835 Holdrege Street, Lincoln, Nebraska 68583, between the hours of 8:00 a.m. and 5:00 p.m., Monday through Friday, except University holidays.

PROJECT COST: None

SOURCE OF FUNDS: None

SPONSOR: Keith L. Lauber  
Director of University Accounting

APPROVAL: \_\_\_\_\_  
David E. Lechner  
Vice President for Business & Finance

DATE: February 5, 2004

TO: The Board of Regents  
Business Affairs

MEETING DATE: February 28, 2004

SUBJECT: Letter of Recommendations for the year ended June 30, 2003.

RECOMMENDED ACTION: Report

PREVIOUS ACTION: None

EXPLANATION: A Letter of Recommendations is furnished by the University's independent auditors, Deloitte & Touche LLP. The report contains observations and recommendations based on Deloitte's audit of the University's June 30, 2003 financial statements.

Members of the public and news media may obtain a copy of the Letter of Recommendations in the Offices of the University Corporation Secretary and the Vice President for Business & Finance, 3835 Holdrege Street, Lincoln, Nebraska 68583, between the hours of 8:00 a.m. and 5:00 p.m., Monday through Friday, except University holidays.

PROJECT COST: None

SOURCE OF FUNDS: None

SPONSOR: Keith L. Lauber  
Director of University Accounting

APPROVAL: \_\_\_\_\_  
David E. Lechner  
Vice President for Business & Finance

DATE: February 5, 2004

TO: The Board of Regents  
Business Affairs

MEETING DATE: February 28, 2004

SUBJECT: Management's response to Letter of Recommendations.

RECOMMENDED ACTION: Report

PREVIOUS ACTION: None

EXPLANATION: The attached letter represents the University of Nebraska's response to recommendations made by Deloitte & Touche LLP, based on the University's June 30, 2003 financial statements.

Members of the public and news media may obtain a copy of the Letter of Recommendations in the Offices of the University Corporation Secretary and the Vice President for Business & Finance, 3835 Holdrege Street, Lincoln, Nebraska 68583, between the hours of 8:00 a.m. and 5:00 p.m., Monday through Friday, except University holidays.

PROJECT COST: None

SOURCE OF FUNDS: None

SPONSOR: Keith L. Lauber  
Director of University Accounting

APPROVAL: \_\_\_\_\_  
David E. Lechner  
Vice President for Business & Finance

DATE: February 11, 2004

TO: The Board of Regents  
Business Affairs

MEETING DATE: February 28, 2004

SUBJECT: Financial statements and related auditors' reports for the University Dental Associates for the years ended June 30, 2003 and 2002.

RECOMMENDED ACTION: Report

PREVIOUS ACTION: None

EXPLANATION: Pursuant to Section VI of the Dental Service Plan of the University Dental Associates, the subject annual reports have been prepared and presented herein.

Loren D. Swanson, Certified Public Accountant, has completed the audits for the years ended June 30, 2003 and 2002 and provided an unqualified opinion on the financial statements.

The complete reports are available for review in the offices of the Corporation Secretary, the Vice President for Business and Finance, and the University of Nebraska Medical Center Chancellor.

Members of the public and news media may obtain a copy of the audit in the Offices of the University Corporation Secretary and the Vice President for Business & Finance, 3835 Holdrege Street, Lincoln, Nebraska 68583, and the Vice Chancellor for Business & Finance of the University of Nebraska Medical Center, Emile at 42<sup>nd</sup> Street, Omaha, Nebraska 68198-6689, between the hours of 8:00 a.m. and 5:00 p.m., Monday through Friday, except University holidays.

PROJECT COST: None

SOURCE OF FUNDS: None

SPONSOR: Donald S. Leuenberger  
Vice Chancellor for Business & Finance

APPROVAL: \_\_\_\_\_  
Harold M. Maurer, M.D., Chancellor  
University of Nebraska Medical Center

DATE: February 5, 2004

TO: The Board of Regents  
Business Affairs

MEETING DATE: February 28, 2004

SUBJECT: Financial statements and related auditors' reports for the University Medical Associates for the years ending June 30, 2003 and 2002.

RECOMMENDED ACTION: Report

PREVIOUS ACTION: None

EXPLANATION: Pursuant to Section VI of the Medical Service Plan of the University Medical Associates, the subject annual audit has been prepared and presented herein.

KPMG has completed the audit for the years ended June 30, 2003 and 2002 and provided an unqualified opinion on the financial statements.

Members of the public and news media may obtain a copy of the audit in the Offices of the University Corporation Secretary and the Vice President for Business & Finance, 3835 Holdrege Street, Lincoln, Nebraska 68583, and the Vice Chancellor for Business & Finance of the University of Nebraska Medical Center, Emile at 42<sup>nd</sup> Street, Omaha, Nebraska 68198-6689, between the hours of 8:00 a.m. and 5:00 p.m., Monday through Friday, except University holidays.

PROJECT COST: None

SOURCE OF FUNDS: None

SPONSOR: Donald S. Leuenberger  
Vice Chancellor for Business & Finance

APPROVAL: \_\_\_\_\_  
Harold M. Maurer, M.D., Chancellor  
University of Nebraska Medical Center

DATE: February 5, 2004

**UNIVERSITY OF NEBRASKA  
SUMMARY HEADCOUNT ENROLLMENT REPORT  
SPRING SEMESTER 2004**

Addendum X-D-8

	Administrative Site			
	Spring 04	Spring 03	Difference	% Change
<b>UNIVERSITY OF NEBRASKA - LINCOLN</b>				
<b>Undergraduate</b>				
Agricultural Sciences & Natural Resources	1,167	1,235	(68)	-5.5%
Architecture	500	453	47	10.4%
Arts & Sciences	3,989	3,968	21	0.5%
Business Administration	2,718	2,934	(216)	-7.4%
Education & Human Sciences (a)	2,372	-	2,372	n/a
Engineering & Technology	2,175	2,216	(41)	-1.9%
Fine & Performing Arts	635	626	9	1.4%
Human Resources & Family Sciences (a)	-	806	(806)	n/a
Journalism & Mass Communications	805	877	(72)	-8.2%
Teachers (a)	-	1,716	(1,716)	n/a
Continuing Studies (b)	-	7	(7)	n/a
General Studies	1,802	1,767	35	2.0%
Visiting	142	149	(7)	-4.7%
<b>Undergraduate Subtotal</b>	<b>16,305</b>	<b>16,754</b>	<b>(449)</b>	<b>-2.7%</b>
<b>Graduate</b>				
	<b>4,075</b>	<b>4,222</b>	<b>(147)</b>	<b>-3.5%</b>
<b>Professional</b>				
Architecture	68	73	(5)	-6.8%
Law	410	400	10	2.5%
<b>Professional Subtotal</b>	<b>478</b>	<b>473</b>	<b>5</b>	<b>1.1%</b>
<b>UNL TOTAL</b>	<b>20,858</b>	<b>21,449</b>	<b>(591)</b>	<b>-2.8%</b>
<b>UNIVERSITY OF NEBRASKA MEDICAL CENTER</b>				
<b>Undergraduate</b>				
Dentistry (Dental Hygiene)	44	40	4	10.0%
Medicine (Allied Health)	103	80	23	28.8%
Nursing	615	548	67	12.2%
Unclassified	2	6	(4)	-66.7%
<b>Undergraduate Subtotal</b>	<b>764</b>	<b>674</b>	<b>90</b>	<b>13.4%</b>
<b>Graduate</b>				
	<b>523</b>	<b>525</b>	<b>(2)</b>	<b>-0.4%</b>
<b>Professional</b>				
Allied Health (PA, PT & Certification Program )	211	213	(2)	-0.9%
Nursing Certification Program	14	12	2	16.7%
Radiation Oncology Physics	1	1	-	n/a
Pharmacy	248	254	(6)	-2.4%
Pharmacy Certification Program	5	5	-	0.0%
Dentistry	182	177	5	2.8%
Dentistry Certification Program	13	14	(1)	-7.1%
Medicine (M.D.)	458	461	(3)	-0.7%
Medicine (Post M.D.)	410	383	27	7.0%
<b>Professional Subtotal</b>	<b>1,542</b>	<b>1,520</b>	<b>22</b>	<b>1.4%</b>
<b>UNMC TOTAL</b>	<b>2,829</b>	<b>2,719</b>	<b>110</b>	<b>4.0%</b>
<b>UNIVERSITY OF NEBRASKA AT OMAHA</b>				
<b>Undergraduate</b>				
Arts & Sciences	3,169	3,114	55	1.8%
Business Administration	1,829	1,852	(23)	-1.2%
Education	1,309	1,270	39	3.1%
Fine Arts	474	499	(25)	-5.0%
Information Science & Technology	728	740	(12)	-1.6%
CPACS	800	791	9	1.1%
Continuing Studies	1,018	1,100	(82)	-7.5%
Non-Degree	318	334	(16)	-4.8%
University Division	608	650	(42)	-6.5%
<b>Undergraduate Subtotal</b>	<b>10,253</b>	<b>10,350</b>	<b>(97)</b>	<b>-0.9%</b>
<b>Graduate</b>				
	<b>2,771</b>	<b>3,000</b>	<b>(229)</b>	<b>-7.6%</b>
<b>UNO TOTAL</b>	<b>13,024</b>	<b>13,350</b>	<b>(326)</b>	<b>-2.4%</b>
<b>UNIVERSITY OF NEBRASKA AT KEARNEY</b>				
<b>Undergraduate</b>				
Business & Technology	1,228	1,261	(33)	-2.6%
Education	1,272	1,238	34	2.7%
Fine Arts & Humanities	607	601	6	1.0%
Natural & Social Sciences	1,336	1,334	2	0.1%
University College	453	507	(54)	-10.7%
<b>Undergraduate Subtotal</b>	<b>4,896</b>	<b>4,941</b>	<b>(45)</b>	<b>-0.9%</b>
<b>Graduate</b>				
	<b>977</b>	<b>1,011</b>	<b>(34)</b>	<b>-3.4%</b>
<b>UNK TOTAL</b>	<b>5,873</b>	<b>5,952</b>	<b>(79)</b>	<b>-1.3%</b>
<b>UNIVERSITY OF NEBRASKA TOTAL</b>	<b>42,584</b>	<b>43,470</b>	<b>(886)</b>	<b>-2.0%</b>
<b>Nebraska College of Technical Agriculture (NCTA)</b>	<b>185</b>	<b>230</b>	<b>(45)</b>	<b>-19.6%</b>
<b>UNIVERSITY OF NEBRASKA TOTAL (with NCTA)</b>	<b>42,769</b>	<b>43,700</b>	<b>(931)</b>	<b>-2.1%</b>

(a) In Fall 2003, the Human Resources & Family Sciences and Teachers Colleges were merged to form the Education and Human Sciences College.

(b) In Fall 2003, the Division of Continuing Education was discontinued.

**University of Nebraska**  
**Headcount Enrollment by Campus and College**  
**Spring Semesters 1994 through 2004**

	1995	1996	1997	1998	1999	2000	2001	2002	2003	2004	10-Year % Change (1995-2004)
<b>UNIVERSITY OF NEBRASKA - LINCOLN</b>											
Undergraduate											
Agricultural Sciences & Natural Resources	1,361	1,409	1,466	1,422	1,367	1,333	1,304	1,242	1,235	1,167	-14.3%
Architecture	447	481	473	432	462	401	448	431	453	500	11.9%
Arts & Sciences	4,148	4,355	4,392	4,152	4,026	3,874	3,884	3,859	3,968	3,989	-3.8%
Business Administration	2,322	2,605	2,644	2,621	2,583	2,645	2,705	2,841	2,934	2,718	17.1%
Education & Human Sciences (a)	0	0	0	0	0	0	0	0	0	2,372	n/a
Engineering & Technology	1,924	1,976	2,024	2,036	2,083	2,174	2,309	2,278	2,216	2,175	13.0%
Fine & Performing Arts	454	520	541	594	588	597	631	635	626	635	39.9%
Human Resources & Family Sciences (a)	774	789	875	851	827	701	720	805	806	0	n/a
Journalism & Mass Communications	823	817	831	825	859	916	905	889	877	805	-2.2%
Teachers (a)	1,807	1,786	1,703	1,594	1,526	1,535	1,615	1,663	1,716	0	n/a
Continuing Studies (b)	557	102	79	65	49	54	34	21	7	0	n/a
General Studies	2,498	2,551	2,402	2,042	2,005	1,980	1,852	1,764	1,767	1,802	-27.9%
Visiting	155	171	181	163	142	131	134	147	149	142	-8.4%
<b>Undergraduate Subtotal</b>	<b>17,270</b>	<b>17,562</b>	<b>17,611</b>	<b>16,797</b>	<b>16,517</b>	<b>16,341</b>	<b>16,541</b>	<b>16,575</b>	<b>16,754</b>	<b>16,305</b>	<b>-5.6%</b>
Graduate (b)	4,756	4,603	4,260	3,944	3,804	3,743	3,980	4,263	4,222	4,075	-14.3%
Professional											
Architecture (c)	0	0	0	46	52	52	54	69	73	68	n/a
Law	398	404	371	363	378	367	363	382	400	410	3.0%
<b>Professional Subtotal</b>	<b>398</b>	<b>404</b>	<b>371</b>	<b>409</b>	<b>430</b>	<b>419</b>	<b>417</b>	<b>451</b>	<b>473</b>	<b>478</b>	<b>20.1%</b>
<b>UNL TOTAL</b>	<b>22,424</b>	<b>22,569</b>	<b>22,242</b>	<b>21,150</b>	<b>20,751</b>	<b>20,503</b>	<b>20,938</b>	<b>21,289</b>	<b>21,449</b>	<b>20,858</b>	<b>-7.0%</b>
<b>UNIVERSITY OF NEBRASKA MEDICAL CENTER</b>											
Undergraduate											
Dentistry (Dental Hygiene)	40	42	39	41	40	39	40	40	40	44	10.0%
Medicine (Allied Health) (d)	249	232	224	227	216	220	74	79	80	103	-58.6%
Nursing	699	604	583	541	498	468	498	536	548	615	-12.0%
Unclassified	20	21	20	12	16	14	14	3	6	2	-90.0%
<b>Undergraduate Subtotal</b>	<b>1,008</b>	<b>899</b>	<b>866</b>	<b>821</b>	<b>770</b>	<b>741</b>	<b>626</b>	<b>658</b>	<b>674</b>	<b>764</b>	<b>-24.2%</b>
Graduate	360	364	386	376	357	392	439	459	525	523	45.3%
Professional											
Allied Health (d)	50	58	54	57	56	58	207	200	213	211	322.0%
Nursing Certification Program (e)	45	34	24	15	14	13	14	13	12	14	n/a
Radiation Oncology Physics (f)	0	0	0	0	0	0	0	0	1	1	n/a
Pharmacy	252	251	256	253	249	253	258	253	254	248	-1.6%
Pharmacy Certification Program	5	8	8	8	8	10	8	6	5	5	0.0%
Dentistry	163	173	169	172	172	173	172	175	177	182	11.7%
Dentistry Certification Program	15	15	12	18	15	16	12	16	14	13	-13.3%
Medicine (M.D.)	504	485	485	462	482	491	478	468	461	458	-9.1%
Medicine (Post M.D.)	368	358	363	364	386	379	390	388	383	410	11.4%
Medical Family Therapy Certification Program	0	0	0	0	0	0	1	0	-	-	n/a
<b>Professional Subtotal</b>	<b>1,402</b>	<b>1,382</b>	<b>1,371</b>	<b>1,349</b>	<b>1,382</b>	<b>1,393</b>	<b>1,540</b>	<b>1,519</b>	<b>1,520</b>	<b>1,542</b>	<b>10.0%</b>
<b>UNMC TOTAL</b>	<b>2,770</b>	<b>2,645</b>	<b>2,623</b>	<b>2,546</b>	<b>2,509</b>	<b>2,526</b>	<b>2,605</b>	<b>2,636</b>	<b>2,719</b>	<b>2,829</b>	<b>2.1%</b>
<b>UNIVERSITY OF NEBRASKA AT OMAHA</b>											
Undergraduate											
Arts & Sciences	3,770	3,516	3,233	2,909	2,820	2,824	2,818	2,954	3,114	3,169	-15.9%
Business Administration	2,374	2,192	2,106	1,877	1,762	1,784	1,674	1,822	1,852	1,829	-23.0%
Education	1,429	1,399	1,356	1,311	1,147	1,108	1,074	1,169	1,270	1,309	-8.4%
Fine Arts	412	436	442	443	472	485	482	487	499	474	15.0%
Information Science & Technology (g)	0	0	165	397	623	766	800	808	740	728	n/a
CPACS (h)	928	955	962	872	766	756	735	770	791	800	-13.8%
Continuing Studies	1,416	1,361	1,349	1,254	1,152	1,154	1,135	1,218	1,100	1,018	-28.1%
Non-Degree	845	665	576	524	511	403	357	334	334	318	-62.4%
University Division	351	386	419	520	600	698	752	736	650	608	73.2%
<b>Undergraduate Subtotal</b>	<b>11,525</b>	<b>10,910</b>	<b>10,608</b>	<b>10,107</b>	<b>9,853</b>	<b>9,978</b>	<b>9,827</b>	<b>10,298</b>	<b>10,350</b>	<b>10,253</b>	<b>-11.0%</b>
Graduate	2,631	2,690	2,651	2,535	2,544	2,639	2,713	3,013	3,000	2,771	5.3%
<b>UNO TOTAL</b>	<b>14,156</b>	<b>13,600</b>	<b>13,259</b>	<b>12,642</b>	<b>12,397</b>	<b>12,617</b>	<b>12,540</b>	<b>13,311</b>	<b>13,350</b>	<b>13,024</b>	<b>-8.0%</b>
<b>UNIVERSITY OF NEBRASKA AT KEARNEY</b>											
Undergraduate											
Business & Technology	1,348	1,350	1,426	1,372	1,391	1,452	1,419	1,327	1,261	1,228	-8.9%
Education	1,476	1,486	1,399	1,350	1,270	1,215	1,180	1,204	1,238	1,272	-13.8%
Fine Arts & Humanities	452	479	488	508	530	552	583	592	601	607	34.3%
Natural & Social Sciences	1,786	1,775	1,756	1,681	1,570	1,389	1,281	1,225	1,334	1,336	-25.2%
University College	747	692	603	624	632	650	583	586	507	453	-39.4%
<b>Undergraduate Subtotal</b>	<b>5,809</b>	<b>5,782</b>	<b>5,672</b>	<b>5,535</b>	<b>5,393</b>	<b>5,258</b>	<b>5,046</b>	<b>4,934</b>	<b>4,941</b>	<b>4,896</b>	<b>-15.7%</b>
Graduate	1,144	1,044	1,018	1,023	946	999	990	990	1,011	977	-14.6%
<b>UNK TOTAL</b>	<b>6,953</b>	<b>6,826</b>	<b>6,690</b>	<b>6,558</b>	<b>6,339</b>	<b>6,257</b>	<b>6,036</b>	<b>5,924</b>	<b>5,952</b>	<b>5,873</b>	<b>-15.5%</b>
<b>UNIVERSITY OF NEBRASKA TOTAL</b>	<b>46,303</b>	<b>45,640</b>	<b>44,814</b>	<b>42,896</b>	<b>41,996</b>	<b>41,903</b>	<b>42,119</b>	<b>43,160</b>	<b>43,470</b>	<b>42,584</b>	<b>-8.0%</b>
Nebraska College of Technical Agriculture (NCTA)	190	232	267	257	244	230	228	220	230	185	-2.6%
<b>UNIVERSITY OF NEBRASKA TOTAL (with NCTA)</b>	<b>46,493</b>	<b>45,872</b>	<b>45,081</b>	<b>43,153</b>	<b>42,240</b>	<b>42,133</b>	<b>42,347</b>	<b>43,380</b>	<b>43,700</b>	<b>42,769</b>	<b>-8.0%</b>

Sources: UNL Institutional Research and Planning, UNMC Office of Academic Records, UNO Office of Institutional Research, and UNK Office of Institutional Research.

See footnotes on attached page.



Footnotes:

- (a) In Fall 2003, the Human Resources & Family Sciences and Teachers Colleges were merged to form the Education and Human Sciences College.
- (b) In Fall 1994, due to improved availability, undergraduate and graduate students in UNL's Continuing Studies could finally be reported separately. This appears as a decrease in Continuing Studies, which now only shows undergraduate, and an increase in Graduate College, which now includes graduate students in the Continuing Studies program. In Fall, 1995, another reporting change was made, to show degree-seeking undergraduates taking Continuing Studies courses in their degree college instead of in Continuing Studies. In Fall 2003, the Division of Continuing Studies was discontinued.
- (c) In Fall 1997, the classification of UNL graduate students in Architecture was changed from graduate to professional.
- (d) In Fall 2000, the classification of UNMC Physical Therapy and Physician Assistant students was changed from undergraduate to professional.
- (e) In Fall 1994, students in UNMC's post-masters certificate program were reported for the first time.
- (f) First enrollment in program occurred in Spring 2003. Program is a post-MS or post-PhD certificate provided by the College of Medicine.
- (g) In 1996, the College of Information Science and Technology was established at UNO.
- (h) The Aviation Institute was incorporated into CPACS in Fall 1994. In this report, Aviation Institute enrollment is reported with CPACS for all years.

**UNIVERSITY OF NEBRASKA  
SUMMARY OF STUDENT CREDIT HOURS  
SPRING SEMESTER - 2004**

	<u>Spring 2004</u>	<u>Spring 2003</u>	<u>Difference</u>	<u>% Change</u>
UNL	251,976	257,570	(5,594)	-2.2%
UNMC	41,011	39,030	1,981	5.1%
UNO	138,643	139,924	(1,281)	-0.9%
UNK	72,260	72,374	(114)	-0.2%
Total	503,890	508,898	(5,009)	-1.0%

Number of credit hours for each campus, with details by College of Faculty and College of Student follows.

**UNIVERSITY OF NEBRASKA-LINCOLN  
STUDENT CREDIT HOUR REPORT  
SPRING SEMESTER - 2004**

COLLEGE OF FACULTY																	
COLLEGE OF STUDENT	CASNR	Architecture	Arts & Sciences	Business Admin.	Education & Human Sciences	Engr. & Tech.	Fine & Perf. Arts	Graduate Studies	Human Res. & Family Sci.	Journalism & Mass Comm.	Teachers	Law	ROTC	Other Units	Spring 04 Total	Spring 03 Total	Change From Spring 03
Ag. Sci. & Nat. Res.	8,317	18	5,495	1,013	389	54	531			259			12	127	16,215	17,084	(869)
Architecture	41	4,209	1,706	31	188	216	385			69		3	8	181	7,037	6,455	582
Arts & Sciences	785	39	44,885	1,926	2,341	82	2,708			264			142	1,288	54,460	53,575	885
Business Administration	368	3	12,176	18,300	2,832	9	2,317			322			63	510	36,900	39,681	(2,781)
Education & Human Sciences	495	8	11,489	779	15,158	3	1,454			150			29	413	29,978		
Engineering & Technology	669	333	8,089	673	139	13,924	373			370			57	272	24,899	25,518	(619)
Fine & Performing Arts	18		2,643	129	344	7	5,264			45			10	84	8,544	8,304	240
Human Resources & Family Sci.																8,519	(8,519)
Journalism & Mass Communications	35		6,040	843	235	6	619			3,241			8	164	11,191	12,078	(887)
Teachers																23,636	(23,636)
Continuing Studies																33	(33)
General Studies	241	37	16,223	1,239	2,759	572	1,759			267			13	279	23,389	22,291	1,098
Visiting	36		325	15	290	25	35						9	45	780	780	
Law		3	38	30	36							6,142	3		6,252	6,176	76
Graduate	2,741	351	8,978	3,188	8,082	1,951	1,347	223		320		39	3	1	27,224	28,485	(1,261)
Criminal Justice - UNO	27		1,757	32	140		131			9			28	44	2,168	1,944	224
Nursing - UNMC			32	3	6		1								42	36	6
Dental Graduates	3		15		18										36	78	(42)
Undergraduate - UNO	1,102	11			761	370									2,244	2,440	(196)
Graduate - UNO	3	8			3	603									617	457	160
<b>TOTAL SPRING 2004</b>	<b>14,881</b>	<b>5,020</b>	<b>119,891</b>	<b>28,201</b>	<b>33,721</b>	<b>17,822</b>	<b>16,924</b>			<b>5,316</b>		<b>6,184</b>	<b>385</b>	<b>3,408</b>	<b>251,976</b>		
<b>TOTAL SPRING 2003</b>	<b>15,934</b>	<b>5,005</b>	<b>122,794</b>	<b>28,676</b>		<b>18,485</b>	<b>15,605</b>		<b>9,440</b>	<b>5,516</b>	<b>26,076</b>	<b>6,142</b>	<b>424</b>	<b>3,473</b>		<b>257,570</b>	
<b>CHANGE FROM SPRING 2003</b>	<b>(1,053)</b>	<b>15</b>	<b>(2,903)</b>	<b>(475)</b>	<b>33,721</b>	<b>(663)</b>	<b>1,319</b>		<b>(9,440)</b>	<b>(200)</b>	<b>(26,076)</b>	<b>42</b>	<b>(39)</b>	<b>(65)</b>			<b>(5,594)</b>
<b>% CHANGE</b>	<b>-6.6%</b>	<b>0.3%</b>	<b>-2.4%</b>	<b>-1.7%</b>	<b>n/a</b>	<b>-3.6%</b>	<b>8.5%</b>	<b>n/a</b>	<b>-100.0%</b>	<b>-3.6%</b>	<b>-100.0%</b>	<b>0.7%</b>	<b>-9.2%</b>	<b>-1.9%</b>			<b>-2.2%</b>

Source: UNL Institutional Research and Planning

**UNIVERSITY OF NEBRASKA MEDICAL CENTER  
STUDENT CREDIT HOUR REPORT  
SPRING SEMESTER - 2004**

COLLEGE OF FACULTY								
COLLEGE OF STUDENT	Medicine	Nursing	Pharmacy	Dentistry	Toxicology	Spring 04 Total	Spring 03 Total	Change From Spring 03
Allied Health	5,123	196				5,319	4,905	414
Nursing - Omaha	84	2,456				2,540	2,255	285
Nursing - Lincoln		2,213				2,213	2,096	117
Nursing - Kearney	56	1,368				1,424	1,396	28
Nursing - Western	54	1,142				1,196	911	285
Nursing - Certification		79				79	66	13
Dentistry				3,703		3,703	3,577	126
Dental Hygiene				651		651	580	71
Dental Certification Program				208		208	480	(272)
Medicine (M.D.)	9,114					9,114	9,026	88
Post M.D.	6,560					6,560	6,094	466
Pharmacy	63		4,102			4,165	4,274	(110)
Pharmacy Certification Program			80			80	80	
Radiation Oncology Physics	12					12	5	7
Unclassified Undergraduate	25	8				33	26	7
Graduate	1,427	1,875	310	60	42	3,714	3,259	455
<b>TOTAL SPRING 2004</b>	<b>22,518</b>	<b>9,337</b>	<b>4,492</b>	<b>4,622</b>	<b>42</b>	<b>41,011</b>		
<b>TOTAL SPRING 2003</b>	<b>22,061</b>	<b>8,295</b>	<b>3,933</b>	<b>4,696</b>	<b>45</b>		<b>39,030</b>	
<b>CHANGE FROM SPRING 2003</b>	<b>457</b>	<b>1,042</b>	<b>559</b>	<b>(74)</b>	<b>(3)</b>			<b>1,981</b>
<b>% CHANGE</b>	<b>2.1%</b>	<b>12.6%</b>	<b>14.2%</b>	<b>-1.6%</b>	<b>-6.7%</b>			<b>5.1%</b>

Source: UNMC Office of Academic Records

**UNIVERSITY OF NEBRASKA AT OMAHA  
STUDENT CREDIT HOUR REPORT  
SPRING SEMESTER - 2004**

COLLEGE OF FACULTY												
COLLEGE OF STUDENT	Arts & Sciences	Business Admin	CPACS	Education	Fine Arts	ISTE	University Division	ROTC	Other Units (a)	Spring 04 Total	Spring 03 Total	Change From Spring 03
Agriculture - UNL	131	21	3	13	12	-	-	-	-	180	162	18
Architecture - UNL	454	18	3	8	180	6	-	-	-	669	577	92
Arts and Sciences	32,525	1,174	1,339	1,164	1,428	390	18	26	18	38,082	36,893	1,189
Business Administration	7,658	11,388	450	797	633	126	4	7	21	21,084	21,280	(196)
Continuing Studies	5,735	547	996	893	530	377	4	32	-	9,114	9,811	(697)
Education	5,869	177	144	8,980	761	108	2	-	12	16,053	14,996	1,057
Engineering & Technology - UNL	3,689	210	117	67	248	414	10	8	6	4,769	4,302	467
Fine Arts	1,824	18	54	254	3,435	18	4	4	6	5,617	5,913	(296)
Human Resources & Family Sci. - UNL	779	51	147	212	97	9	2	3	3	1,303	1,610	(307)
Information Science & Technology	3,305	699	99	97	250	3,930	6	5	39	8,430	8,459	(29)
Non-Degree	1,117	202	102	155	136	48	2	3	-	1,765	1,734	31
CPACS	2,762	136	3,065	230	171	81	2	9	-	6,456	6,755	(299)
University Division	5,392	209	516	509	501	107	42	-	-	7,276	7,875	(599)
Undergraduate - UNL	-	-	2,898	-	-	-	-	-	-	2,898	2,979	(81)
Graduate	2,270	2,584	3,219	5,252	258	1,361	-	3	-	14,947	16,578	(1,631)
<b>TOTAL SPRING 2004</b>	<b>73,510</b>	<b>17,434</b>	<b>13,152</b>	<b>18,631</b>	<b>8,640</b>	<b>6,975</b>	<b>96</b>	<b>100</b>	<b>105</b>	<b>138,643</b>		
<b>TOTAL SPRING 2003</b>	<b>73,864</b>	<b>18,299</b>	<b>12,837</b>	<b>18,127</b>	<b>8,512</b>	<b>7,831</b>	<b>194</b>	<b>164</b>	<b>96</b>		<b>139,924</b>	
<b>CHANGE FROM SPRING 2003</b>	<b>(354)</b>	<b>(865)</b>	<b>315</b>	<b>504</b>	<b>128</b>	<b>(856)</b>	<b>(98)</b>	<b>(64)</b>	<b>9</b>			<b>(1,281)</b>
<b>% CHANGE</b>	<b>-0.5%</b>	<b>-4.7%</b>	<b>2.5%</b>	<b>2.8%</b>	<b>1.5%</b>	<b>-10.9%</b>	<b>-50.5%</b>	<b>-39.0%</b>	<b>9.4%</b>			<b>-0.9%</b>

(a) Other Units include: Honors Colloquium and Library courses.

Source: UNO Institutional Research

**UNIVERSITY OF NEBRASKA AT KEARNEY  
STUDENT CREDIT HOUR REPORT  
SPRING SEMESTER - 2004**

<b>COLLEGE OF FACULTY</b>							
<b>COLLEGE OF STUDENT</b>	<b>Business &amp; Tech</b>	<b>Education</b>	<b>Fine Arts &amp; Humanities</b>	<b>Natural &amp; Social Sciences</b>	<b>Spring 04 Total</b>	<b>Spring 03 Total</b>	<b>Change From Spring 03</b>
Business & Technology	10,592	380	2,212	3,321	16,505	16,809	(304)
Education	1,186	8,663	3,805	4,704	18,358	17,862	496
Fine Arts & Humanities	842	285	5,378	1,797	8,302	8,189	113
Natural & Social Sciences	1,621	608	3,303	12,446	17,978	17,620	358
University College	895	374	1,825	2,624	5,718	6,339	(621)
Graduate	502	3,902	376	619	5,399	5,555	(156)
<b>TOTAL SPRING 2004</b>	<b>15,638</b>	<b>14,212</b>	<b>16,899</b>	<b>25,511</b>	<b>72,260</b>		
<b>TOTAL SPRING 2003</b>	<b>16,724</b>	<b>13,925</b>	<b>16,646</b>	<b>25,079</b>		<b>72,374</b>	
<b>CHANGE FROM SPRING 2003</b>	<b>(1,086)</b>	<b>287</b>	<b>253</b>	<b>432</b>			<b>(114)</b>
<b>% CHANGE</b>	<b>-6.5%</b>	<b>2.1%</b>	<b>1.5%</b>	<b>1.7%</b>			<b>-0.2%</b>

Source: UNK Institutional Research

TO: The Board of Regents  
Academic Affairs

MEETING DATE: February 28, 2004

SUBJECT: Personnel Actions for October – December 2003

RECOMMENDED ACTION: Report

PREVIOUS ACTION: On December 10, 1994, the Board of Regents amended Section 3.2 of the *Bylaws of the Board of Regents* to delegate to the President, or administrative officers designated by the President, authority to make appointments in the Academic-Administrative staff to faculty positions and to administrative positions below the rank of Dean and equivalent ranks. Executive Memorandum No. 13 subsequently delegated authority to the Chancellors to make Academic-Administrative appointments below the level of Dean. Such appointments at the rank of assistant professor or above are required by the *Bylaws of the Board of Regents* to be reported to the Board after each quarter and maintained on file as a public record in the Office of the Corporation Secretary.

EXPLANATION: A series of reports of campus personnel actions approved by each Chancellor during the 4<sup>th</sup> quarter of 2003 are attached.

PROJECT COST: None

SOURCE OF FUNDS: None

APPROVAL: \_\_\_\_\_  
Jay Noren  
Executive Vice President and Provost

DATE: February 5, 2004

**CHANCELLOR'S PERSONNEL REPORT  
10/1/03 - 12/31/03  
UNIVERSITY OF NEBRASKA-LINCOLN**

**NEW APPOINTMENTS**

<u>NAME</u>	<u>DEPARTMENT</u>	<u>TITLE</u>	<u>APPT TYPE</u>	<u>BEGIN DATE</u>	<u>END DATE</u>	<u>SALARY</u>		<u>FTE</u>
Barney, Brett	University Libraries	Research Assistant Professor	Special	11/01/03	10/31/06	33,820	FY	1.00
Binek, Christian	Physics and Astronomy	Assistant Professor	Specific Term	10/06/03		60,000	AY	1.00
Kunz, Gina	Educational Psychology	Research Assistant Professor	Special	10/01/03	09/30/04	50,000	FY	1.00
Loladze, Irakli	Mathematics	Research Assistant Professor	Special	11/01/03	01/03/04	55,000	AY	1.00
Schartz, Michalla R.	Special Ed & Communication Disorders	Project Coordinator	Special	11/01/03		30,000	FY	0.60



**CHANCELLOR'S PERSONNEL REPORT  
10/1/03 - 12/31/03  
UNIVERSITY OF NEBRASKA-LINCOLN IANR**

**NEW APPOINTMENTS**

<u>NAME</u>	<u>DEPARTMENT</u>	<u>TITLE</u>	<u>APPT TYPE</u>	<u>BEGIN DATE</u>	<u>END DATE</u>	<u>SALARY</u>		<u>FTE</u>
Ginting, Daniel	Agronomy/Horticulture	Research Assistant Professor	Special	11/01/03	12/31/06	48,000	FY	1.00
Irmak, Suat	Biological Systems	Assistant Professor	Specific Term	12/01/03		70,000	FY	1.00
Marksbury, Shannon	SEREC	Assistant Extension Educator	Special	11/03/03		33,000	FY	1.00
Sridhar, Venkataramana	School of Natural Resources	Research Assistant Professor	Special	11/26/03		54,000	FY	1.00

**CHANCELLOR'S PERSONNEL REPORT**  
**10/1/03 - 12/31/03**  
**UNIVERSITY OF NEBRASKA MEDICAL CENTER**

**NEW APPOINTMENTS**

<u>NAME</u>	<u>DEPARTMENT</u>	<u>TITLE</u>	<u>APPT TYPE</u>	<u>BEGIN DATE</u>	<u>END DATE</u>	<u>SALARY</u>		<u>FTE</u>
Benson, Jr., John A.	Internal Medicine	Professor	Special	10/01/03		120,000	FY	1.00
Fung, Albert Y.C.	Radiation Oncology	Associate Professor	Special	11/01/03		141,500	FY	1.00
Gould, Karen A.	Genetics, Cell Biology, and Anatomy	Assistant Professor	Special	10/01/03		55,500	FY	1.00
Grem, Jean L.	Internal Medicine	Professor	Health Prof	10/01/03	06/30/04	100,000	FY	1.00
Magee, Martha L.	Library of Medicine	Assistant Professor	Special	11/01/03		46,750	FY	1.00
Margalit, Eyal	Ophthalmology	Assistant Professor	Health Prof	10/01/03	06/30/05	55,000	FY	1.00
Margalit, Ruth S.	Preventive & Societal Medicine	Assistant Professor	Special	10/01/03		25,000	FY	0.40
Pavlov, Youri I.	Eppley Institute	Assistant Professor	Health Prof	11/17/03	06/30/07	65,000	FY	1.00
Shcherbakova, Polina V.	Eppley Institute	Assistant Professor	Health Prof	11/17/03	06/30/07	65,000	FY	1.00
Thaisetthawatkul, Pariwat	Neurological Sciences	Assistant Professor	Health Prof	12/01/03	06/30/05	80,750	FY	1.00
Walker, Jerry D.	COD - Growth & Development	Professor	Special	10/01/03		45,000	FY	0.50

**CHANCELLOR'S PERSONNEL REPORT**  
**10/1/03 - 12/31/03**  
**UNIVERSITY OF NEBRASKA CENTRAL ADMINISTRATION**

**NEW APPOINTMENTS**

<u>NAME</u>	<u>DEPARTMENT</u>	<u>TITLE</u>	<u>APPT TYPE</u>	<u>BEGIN DATE</u>	<u>END DATE</u>	<u>SALARY</u>		<u>FTE</u>
Carr, Michael G.	Computing Services Network	Director, Security/Compliance	Special	11/12/03		87,000	FY	1.00
Maybank, Denise B.	Office of the President	Associate to the President	Special	10/06/03		86,000	FY	1.00
Rogers, Gregory A.	Executive Vice President & Provost	Assistant Vice President and Director of Institutional Research	Special	09/29/03		93,500	FY	1.00

**CHANCELLOR'S PERSONNEL REPORT  
10/1/03 - 12/31/03  
UNIVERSITY OF NEBRASKA-LINCOLN**

**ADJUSTMENTS**

<u>NAME</u>	<u>DEPARTMENT</u>	<u>TITLE</u>	<u>APPT TYPE</u>	<u>BEGIN DATE</u>	<u>END DATE</u>	<u>SALARY</u>	<u>FTE</u>
Bruning, Roger	Center for Instructional Innovation	Co-Director	Special	10/01/03		4,500 AY	0.00
		N/A	N/A			0 AY	0.00
	Educational Psychology	Professor	Continuous			98,307 AY	1.00
		Professor	Continuous			98,307 AY	1.00
		College Professor	Special			10,000 AY	0.00
		College Professor	Special			10,000 AY	0.00
Bryant, Donald	Athletics	Director - Emeritus	Special	10/01/03		12,000 FY	0.51
		Director - Emeritus	Special			45,301 FY	0.51
	Advertising	Lecturer	Special			3,000 AY	0.25
		Lecturer	Special			3,000 AY	0.25
Caldwell, Celika	Technology Transfer	Coordinator/Tech License	Special	10/01/03		85,000 FY	1.00
		Coordinator	Special			72,800 FY	1.00
McNeil, Mary	University Libraries	Associate Dean	Special	12/11/03		70,000 FY	1.00
		Assistant Dean	Special			70,000 FY	1.00
Parkhurst, Kay	Chemistry	Research Assistant Professor	Special	12/01/03		25,185 FY	0.50
		Research Assistant Professor	Special			50,371 FY	1.00
Sterns, Elizabeth	Center for Children, Family, and the Law	Coordinator	Special	10/01/03		34,753 FY	0.75
		Coordinator	Special			46,338 FY	1.00

*Shaded reflects new or ongoing appointment*

*Un-shaded reflects old appointment*

**CHANCELLOR'S PERSONNEL REPORT  
10/1/03 - 12/31/03  
UNIVERSITY OF NEBRASKA-LINCOLN IANR**

**ADJUSTMENTS**

<u>NAME</u>	<u>DEPARTMENT</u>	<u>TITLE</u>	<u>APPT TYPE</u>	<u>BEGIN DATE</u>	<u>END DATE</u>	<u>SALARY</u>		<u>FTE</u>
Inman, Melissa	Vet & Biomedical Sciences	Research Assistant Professor	Special	10/01/03		35,000	FY	1.00
		Post-Doc	Special		09/30/03	25,000	FY	1.00
Martin, Derrel	Biological Systems Engineering	Interim Department Head	Special	10/23/03	04/23/04	75,923	FY	0.60
		N/A	N/A			0	FY	0.00
		Professor	Continuous			43,384	FY	0.40
		Professor	Continuous		10/22/03	108,416	FY	1.00

*Shaded reflects new or ongoing appointment*  
*Un-shaded reflects old appointment*

**CHANCELLOR'S PERSONNEL REPORT  
10/1/03 - 12/31/03  
UNIVERSITY OF NEBRASKA MEDICAL CENTER**

**ADJUSTMENTS**

<u>NAME</u>	<u>DEPARTMENT</u>	<u>TITLE</u>	<u>APPT TYPE</u>	<u>BEGIN DATE</u>	<u>END DATE</u>	<u>SALARY</u>		<u>FTE</u>	
<sup>(1)</sup> Armitage, James O.	Internal Medicine	Professor	Continuous	12/15/03		230,000	FY	1.00	
		Professor	Continuous			0	FY	0.00	
	College of Medicine	N/A	N/A	12/15/03		0	FY	0.00	
		Dean	Special			231,595	FY	1.00	
		N/A	N/A	12/15/03		0	FY	0.00	
		Dean (stipend)	Special			10,000	FY	0.00	
		Named Professorship	Special	12/15/03		0	FY	0.00	
		Named Professorship	Special			0	FY	0.00	
	Bohac, Daryl L.	Psychiatry	Assistant Professor	Special	11/08/03		10,000	FY	0.17
			Assistant Professor	Special			59,564	FY	1.00
<sup>(2)</sup> Eberle, Catherine	Internal Medicine	Associate Professor	Health Prof	10/05/03		57,410	FY	0.67	
		Associate Professor	Health Prof			85,705	FY	1.00	
Hartman, Teresa	Library of Medicine	Assistant Professor	Health Prof	11/01/03	06/30/06	48,220	FY	1.00	
		Assistant Professor	Special			48,220	FY	1.00	
		Head, Education Dept.	Special	11/01/03		0	FY	0.00	
		N/A	N/A			0	FY	0.00	
Johanning, Jason M.	Surgery	Assistant Professor	Health Prof	11/01/03	06/30/04	63,180	FY	1.00	
		Assistant Professor	Health Prof			44,226	FY	0.70	

<sup>(1)</sup> Joe Shapiro Chair for the Study of Oncology and Clinical Research

<sup>(2)</sup> Salary rate reflects variance in UNMC and Veterans Administration Hospital compensation.

*Shaded reflects new or ongoing appointment*

*Un-shaded reflects old appointment*

**CHANCELLOR'S PERSONNEL REPORT  
10/1/03 - 12/31/03  
UNIVERSITY OF NEBRASKA MEDICAL CENTER**

**ADJUSTMENTS**

<u>NAME</u>	<u>DEPARTMENT</u>	<u>TITLE</u>	<u>APPT TYPE</u>	<u>BEGIN DATE</u>	<u>END DATE</u>	<u>SALARY</u>	<u>FTE</u>
Krobot, Charles H.	Pharmacy Practice	Assistant Professor	Special	10/01/03		0 FY	0.00
		Instructor	Special			0 FY	0.00
	College of Pharmacy	Assoc Dean, Academic Affairs	Special	10/01/03		80,000 FY	1.00
		Assoc Dean, Academic Affairs	Special			80,000 FY	1.00
		Assoc Dean, Acad Affrs (stipend)	Special	10/01/03		15,000 FY	0.00
		Assoc Dean, Acad Affrs (stipend)	Special			15,000 FY	0.00
<sup>(2)</sup> Pipinos, Iraklis I.	Surgery	Assistant Professor	Health Prof	11/01/03		15,795 FY	0.25
		Assistant Professor	Health Prof			44,226 FY	0.70
<sup>(3)</sup> Rennard, Stephen I.	Internal Medicine	Professor	Continuous	10/01/03		145,737 FY	0.89
		Professor	Continuous			145,737 FY	0.89
		Named Professorship	Special	10/01/03		8,000 FY	0.11
		Named Professorship	Special			8,000 FY	0.11
<sup>(4)</sup> Romberger, Debra	Internal Medicine	Associate Professor	Continuous	12/15/03		15,130 FY	0.17
		Associate Professor	Continuous			37,825 FY	0.42
		Interim Chair (incl. stipend)	Special	12/15/03		37,695 FY	0.25
		N/A	N/A			0 FY	0.00
		Named Professorship	Special	12/15/03		0 FY	0.00
		N/A	N/A			0 FY	0.00

<sup>(2)</sup> Salary rate reflects variance in UNMC and Veterans Administration Hospital compensation.

<sup>(3)</sup> Change name of named professorship from Larson Professor to Larson Professorship for Research in Respiratory Diseases.

<sup>(4)</sup> Henry J. Lenhoff Professor of Internal Medicine

*Shaded reflects new or ongoing appointment*

*Un-shaded reflects old appointment*

**CHANCELLOR'S PERSONNEL REPORT  
10/1/03 - 12/31/03  
UNIVERSITY OF NEBRASKA MEDICAL CENTER**

**ADJUSTMENTS**

<u>NAME</u>	<u>DEPARTMENT</u>	<u>TITLE</u>	<u>APPT TYPE</u>	<u>BEGIN DATE</u>	<u>END DATE</u>	<u>SALARY</u>		<u>FTE</u>
<sup>(5)</sup> Sisson, Joseph H.	Internal Medicine	Professor	Continuous	10/01/03		93,745	FY	0.90
		Professor	Continuous			93,745	FY	0.90
		Named Professorship	Special	10/01/03		8,000	FY	0.10
		Named Professorship	Special			8,000	FY	0.10
<sup>(6)</sup> Smith, Shelley D.	Pediatrics	Professor	Continuous	09/01/03		0	FY	0.00
		Professor	Continuous			0	FY	0.00
	Munroe-Meyer Institute	Discipline Dir, HBM Mol. Gen.	Special	09/01/03		80,383	FY	0.62
		Scientist	Special			77,766	FY	0.60
		Disipl. Dir, HBM Mol. Gen. (stp)	Special	09/01/03		10,000	FY	0.00
		Interim Director (stipend)	Special			10,000	FY	0.00
		Endowed Professorship	Special	09/01/03		49,267	FY	0.38
		Endowed Professorship	Special			51,884	FY	0.40
Thiele, Geoffrey M.	Internal Medicine	Professor	Health Prof	11/01/03	06/30/05	75,951	FY	1.00
		Professor	Special			75,951	FY	1.00

<sup>(5)</sup> Change name of named professorship from Larson Professorship for Research in Respiratory Diseases to Larson Professor.

<sup>(6)</sup> Hattie B. Munroe Endowed Professorship

*Shaded reflects new or ongoing appointment*

*Un-shaded reflects old appointment*



**CHANCELLOR'S PERSONNEL REPORT  
10/1/03 - 12/31/03  
UNIVERSITY OF NEBRASKA AT OMAHA**

**ADJUSTMENTS**

<u>NAME</u>	<u>DEPARTMENT</u>	<u>TITLE</u>	<u>APPT TYPE</u>	<u>BEGIN DATE</u>	<u>END DATE</u>	<u>SALARY</u>		<u>FTE</u>
Gouveia, Lourdes	Latino/Latin American Studies	Director	Special	09/01/03	05/14/04	5,000	AY	0.00
		N/A	N/A			0	AY	0.00
	Sociology/Anthropology	Associate Professor	Continuous	09/01/03		56,192	AY	1.00
		Associate Professor	Continuous			56,192	AY	1.00
Lipschultz, Jeremy	Communications	Named Chair	Special	10/01/03		10,000	AY	0.00
		Named Chair	Special			8,000	AY	0.00
		Professor	Continuous	10/01/03		66,480	AY	1.00
		Professor	Continuous			66,480	AY	1.00

*Shaded reflects new or ongoing appointment*

*Un-shaded reflects old appointment*

**CHANCELLOR'S PERSONNEL REPORT**  
**10/1/03 - 12/31/03**  
**UNIVERSITY OF NEBRASKA AT KEARNEY**

**ADJUSTMENTS**

<u>NAME</u>	<u>DEPARTMENT</u>	<u>TITLE</u>	<u>APPT TYPE</u>	<u>BEGIN DATE</u>	<u>END DATE</u>	<u>SALARY</u>		<u>FTE</u>
Fleming, James	Counseling & School Psychology	Associate Professor	Continuous	08/18/03		52,092	AY	1.00
		Associate Professor	Continuous			51,192	AY	1.00
		Interim Counseling Ctr. Director	Special	10/06/03	06/30/04	4,500	AY	0.00
		N/A	N/A			0	AY	0.00

*Shaded reflects new or ongoing appointment*

*Un-shaded reflects old appointment*

**CHANCELLOR'S PERSONNEL REPORT**  
**10/1/03 - 12/31/03**  
**UNIVERSITY OF NEBRASKA CENTRAL ADMINISTRATION**

**ADJUSTMENTS**

<u>NAME</u>	<u>DEPARTMENT</u>	<u>TITLE</u>	<u>APPT TYPE</u>	<u>BEGIN DATE</u>	<u>END DATE</u>	<u>SALARY</u>		<u>FTE</u>
Kabourek, Christopher J.	Executive Vice President & Provost	Director of Budget	Special	11/01/03		75,000	FY	1.00
		Budget Coordinator/Analyst	Special		10/31/03	55,920	FY	1.00
		Acting Director of Budget						

*Shaded reflects new or ongoing appointment*  
*Un-shaded reflects old appointment*

**CHANCELLOR'S PERSONNEL REPORT**  
**10/1/03 - 12/31/03**  
**UNIVERSITY OF NEBRASKA-LINCOLN IANR**

**EMERITUS STATUS**

<u>NAME</u>	<u>DEPARTMENT</u>	<u>TITLE</u>	<u>BEGIN DATE</u>
Heusel, Gary	Cooperative Extension Division 4-H & Youth Development	Program Leader	07/01/03
Hoffman, Glenn	Biological Systems Engineering	Professor & Department Head	07/01/03
Pabian, Roger	Survey Division Conservation & Survey	Professor	07/01/03

CHANCELLOR'S PERSONNEL REPORT  
10/1/03 - 12/31/03  
UNIVERSITY OF NEBRASKA MEDICAL CENTER

EMERITUS STATUS

<u>NAME</u>	<u>DEPARTMENT</u>	<u>TITLE</u>	<u>BEGIN DATE</u>
Lindsey, Ada M.	College of Nursing	Dean & Professor	10/07/03

TO: The Board of Regents  
Business Affairs

MEETING DATE: February 28, 2004

SUBJECT: Status of Capital Projects exceeding \$2 million as of December 31, 2003.

RECOMMENDED ACTION: Report

PREVIOUS ACTION: The attached status report is a summary of all capital projects exceeding \$2 million in total project costs and outlines the campus and project, contract status, stage of construction, budget categories and budgets for the period July 1, 2003, through December 31, 2003.

SPONSOR: Rebecca H. Koller  
Assistant Vice President for Business & Finance  
Director of Facilities Planning & Management

APPROVAL: \_\_\_\_\_  
David E. Lechner  
Vice President for Business & Finance

DATE: February 5, 2004

**Status Report of Construction Projects Exceeding \$2.0 Million  
for period July 1, 2003, through December 31, 2003**

Campus / Project	Contract Status and Date	State of Construction	Approved Budget Categories	Amount
University of Nebraska Deferred Maintenance - LB309	Architect: Various Contract Date: Various Method of Construction: N/A General Contractor: Various Contract Date: Various	Ongoing Projects	Total Projects Cost	\$ 9,121,185
University of Nebraska at Kearney Bruner Hall Renovation	Architect: Farris Engineering Contract Date: May 15, 2000 Method of Construction: Construction Manager/GMP General Contractor: Sampson Construction Contract Date: January 8, 2001	Percent of Funds Expended: 80% Substantial Completion Date: December 1, 2003	1. Construction Budget 2. Non Construction Budget Total Project Cost	\$ 5,931,057 \$ 565,795 \$ 6,496,852
University of Nebraska-Lincoln Natural Resources & Research Complex	Architect: Alley-Poyner Architecture Contract Date: October 10, 2001 Method of Construction: Conventional Bidding General Contractor: NA Contract Date: NA	Percent of Funds Expended: 4% Substantial Completion Date: (June 1, 2005)	1. Construction Budget 2. Non Construction Budget Total Project Cost	\$ 14,351,000 \$ 2,737,000 \$ 17,088,000
University of Nebraska-Lincoln Avery Hall Renovation	Architect: Alley-Poyner Architecture P.C. Contract Date: January 15, 2001 Method of Construction: Construction Manager/GMP General Contractor: Builders, Inc. Contract Date: January 8, 2001	Percent of Funds Expended: 45% Substantial Completion Date: (May 31, 2004)	1. Construction Budget 2. Non Construction Budget Total Project Cost	\$ 7,205,603 \$ 3,571,428 \$ 10,777,031
University of Nebraska-Lincoln Selleck Hall Dining Addition	Architect: The Clark Enersen Partners Contract Date: March 28, 2003 Method of Construction: Conventional Bidding General Contractor: Lueder Construction Co. Contract Date: December 1, 2003	Percent of Funds Expended: 2% Substantial Completion Date: (August 10, 2004)	1. Construction Budget 2. Non Construction Budget Total Project Cost	\$ 4,003,881 \$ 2,534,519 \$ 6,538,400
University of Nebraska-Lincoln Hamilton Hall Infrastructure Replacement	Architect: The Clark Enersen Partners Contract Date: February 8, 2000 Method of Construction: Construction Manager/GMP General Contractor: Shanahan Mechanical & Electrical Contract Date: February 28, 2001	Percent of Funds Expended: 65% Substantial Completion Date: (May 10, 2005)	1. Construction Budget 2. Non Construction Budget Total Project Cost	\$ 15,676,496 \$ 1,896,564 \$ 17,573,060
University of Nebraska-Lincoln Donald F. Othmer Hall Finishing Shell Space	Architect: Davis Design Contract Date: April 8, 2002 Method of Construction: Conventional Bidding General Contractor: Builders Inc. Contract Date: March 20, 2003	Percent of Funds Expended: 46% Substantial Completion Date: (February 27, 2004)	1. Construction Budget 2. Non Construction Budget Total Project Cost	\$ 3,445,841 \$ 1,869,671 \$ 5,315,512
University of Nebraska-Lincoln 17th & Vine Student Housing Project	Architect: Sinclair Hille Architects Contract Date: Design/Build Method of Construction: Design/Build General Contractor: Sampson Construction Company Contract Date: December 19, 2002	Percent of Funds Expended: 20% Substantial Completion Date: (July 1, 2004)	1. Construction Budget 2. Non Construction Budget Total Project Cost	\$ 19,202,000 \$ 2,934,000 \$ 22,136,000

**Status Report of Construction Projects Exceeding \$2.0 Million - continued  
for period July 1, 2003, through December 31, 2003**

**Page 2**

Campus / Project	Contract Status and Date	State of Construction	Approved Budget Categories	Amount
University of Nebraska-Lincoln 14th & Avery Street Parking Structure	Architect: The Clark Enersen Partners Contract Date: Design/Build Method of Construction: Design/Build General Contractor: Sampson Construction Company Contract Date: December 5, 2002	Percent of Funds Expended: 37% Substantial Completion Date: (June 30, 2004)	1. Construction Budget 2. Non Construction Budget Total Project Cost	\$ 7,278,750 \$ 516,250 \$ 7,795,000
University of Nebraska-Lincoln Transportation Services Facility Renovation	Architect: Davis Design Contract Date: June 28, 2002 Method of Construction: Conventional Bidding General Contractor: Piedmont Construction Contract Date: October 22, 2002	Percent of Funds Expended: 53% Substantial Completion Date: (January 16, 2004)	1. Construction Budget 2. Non Construction Budget Total Project Cost	\$ 2,344,000 \$ 470,000 \$ 2,814,000
University of Nebraska-Lincoln 16th & Y Student Housing	Architect: Sinclair Hille Architects Contract Date: June 7, 2003 Method of Construction: Conventional Bidding General Contractor: Sampson Construction Co. Contract Date: December 17, 2003	Percent of Funds Expended: 1% Substantial Completion Date: (June 1, 2005)	1. Construction Budget 2. Non Construction Budget Total Project Cost	\$ 26,527,020 \$ 3,942,980 \$ 30,470,000
University of Nebraska-Lincoln Baseball Complex	Architect: DLR Group Contract Date: October 1, 1999 Method of Construction: Construction Manager/GMP General Contractor: Sampson Construction Company Contract Date: April 10, 2000	Percent of Funds Expended: 96% Substantial Completion Date: October 1, 2003	1. Construction Budget 2. Non Construction Budget Total Project Cost	\$ 9,477,346 \$ 1,122,654 \$ 10,600,000
University of Nebraska-Lincoln Harper, Schramm, Smith Residence Halls Window Replacement	Architect: Batheja & Associates Contract Date: December 12, 2002 Method of Construction: Design/Build General Contractor: Omaha Door and Window Contract Date: March 4, 2003	Percent of Funds Expended: 17% Substantial Completion Date: (August 9, 2004)	1. Construction Budget 2. Non Construction Budget Total Project Cost	\$ 1,980,000 \$ 195,955 \$ 2,175,955
University of Nebraska-Lincoln Harper, Schramm, Smith Residence Halls Renovation	Architect: Ryan Companies Contract Date: September 24, 2003 Method of Construction: Design/Build General Contractor: Ryan Companies Contract Date: September 24, 2003	Percent of Funds Expended: 0% Substantial Completion Date: (August 8, 2005)	1. Construction Budget 2. Non Construction Budget Total Project Cost	\$ 21,439,715 \$ 2,862,285 \$ 24,302,000
University of Nebraska-Lincoln Othmer Hall-Finishing Basement for Shell Space	Architect: NA Contract Date: NA Method of Construction: Conventional Bidding General Contractor: NA Contract Date: NA	Percent of Funds Expended: 0% Substantial Completion Date: (June 1, 2005)	1. Construction Budget 2. Non Construction Budget Total Project Cost	\$ 621,602 \$ 4,048,398 \$ 4,670,000
University of Nebraska Medical Center Durham Research Center previously known as Research Center of Excellence	Architect: HDR Contract Date: 09/29/00 Method of Construction: Construction Manager/GMP General Contractor: Hawkins Contract Date: 08/08/01	Percent of Funds Expended: 91% Substantial Completion Date: (January 2, 2004)	1. Construction Budget 2. Non Construction Budget Total Project Cost	\$ 66,238,379.00 \$ 10,761,621.00 \$ 77,000,000.00



**Status Report of Construction Projects Exceeding \$2.0 Million - continued  
for period July 1, 2003, through December 31, 2003**

Page 3

Campus / Project	Contract Status and Date	State of Construction	Approved Budget Categories	Amount
University of Nebraska Medical Center Comparative Medicine Containment Facility - 4230 Building	Architect: Davis Design & Olsson Assoc. Contract Date: February 12, 2002 & July 1, 2002 Method of Construction: Conventional Bidding General Contractor: W Boyd Jones Construction Contract Date: 06/05/02	Percent of Funds Expended: 95% Substantial Completion Date: August 14, 2003	1. Construction Budget 2. Non Construction Budget Total Project Cost	\$ 1,760,000.00 \$ 505,000.00 \$ 2,265,000.00
University of Nebraska Medical Center Center for Neurovirology and Neurodegenerative Disorders - (CNND) Renovation	Architect: Davis Design Contract Date: July 23, 2002 Method of Construction: Conventional Bidding General Contractor: F & B Constructors Inc. Contract Date: 09/12/03	Percent of Funds Expended: 13% Substantial Completion Date: (June 30, 2004)	1. Construction Budget 2. Non Construction Budget Total Project Cost	\$ 2,396,518.00 \$ 449,070.00 \$ 2,845,588.00
University of Nebraska Medical Center Student Apartments - 38th & Jackson	Architect: Batheja and Assoc. Contract Date: July 9, 2003 Method of Construction: Conventional Bidding General Contractor: NA Contract Date: NA	Percent of Funds Expended: 8% Substantial Completion Date: (September 23, 2004)	1. Construction Budget 2. Non Construction Budget Total Project Cost	\$ 4,272,000.00 \$ 578,000.00 \$ 4,850,000.00

TO: The Board of Regents  
Business Affairs

MEETING DATE: February 28, 2004

SUBJECT: Report on the Othmer-Topp Endowment Fund, second priority uses, for the year ended December 31, 2003

PREVIOUS ACTION: January 13, 2001 – The Board of Regents approved clarification of first priority and second priority uses of income from the Othmer-Topp Endowment. On or before March 1 of each year the Chancellor is to provide a written report to the President and the Board of Regents regarding second priority general purpose expenditures from the endowment fund.

EXPLANATION: The attached letter from the Chancellor presents the required report.

PROJECT COST: None

SOURCE OF FUNDS: None

SPONSORS: David Brinkerhoff  
Interim Senior Vice Chancellor for Academic Affairs  
  
Christine A. Jackson  
Vice Chancellor for Business & Finance

APPROVAL: \_\_\_\_\_  
Harvey Perlman, Chancellor  
University of Nebraska-Lincoln

DATE: February 5, 2004

February 5, 2004

L. Dennis Smith, President  
University of Nebraska  
135 Varner Hall  
East Campus 0745

Dear President Smith:

I am writing to provide the third annual report on the use of Othmer-Topp funds required by the Board of Regents' action on January 13, 2001. As was the case last year, I believe that it may be helpful to report on the use of all Othmer-Topp endowment income funds available for use by UNL, as well as the "second priority general purpose" uses of the fund. Please note that the following report includes all expenditures through December 31, 2003.

#### **First Priority Expenditures**

Othmer-Topp Professor of Chemical Engineering: This position was filled effective February 1, 2000 with a resulting total expenditure during the 2003 calendar year of \$112,990. Cumulative expenditures on this position have been \$468,422.

#### **Second Priority Expenditures (Current)**

Campus-wide graduate fellowships: For the Fall Semester of the 2003-2004 academic year, fellowships were newly awarded to 22 students from eleven different departments. In total, the program provides 66 graduate fellowships, with 22 of those rotating to new recipients each year. A \$7,500 stipend is paid to supplement a departmental graduate teaching or research assistantship. The program has now reached full implementation budgeted to be \$500,000 annually. \$481,165 was expended in the current reporting period, for a cumulative total of \$1,723,001 as of December 31, 2003.

Distinguished professorships/chairs: The plan is to create 23 Othmer chairs (at \$50,000 per year) or professorships (at \$25,000 per year). To date, donors for 15 chairs (requiring a \$500,000 match) and eight professorships (requiring a \$250,000 endowed match) have been identified. As of December 31, 2003, eleven of these positions have been filled, seven searches are in progress, three are on hold, and two searches are pending. As of December 31, 2003, \$142,205 in Othmer-Topp funds has been expended in support of the eleven filled lines. An equal amount of matching funds has been spent in the same time period. The total spent from Othmer funds across the three years has been \$367,597.

#### **Second Priority Commitments (Future)**

NEH Regional Humanities Center: During 2003, \$59,057 of Othmer-Topp funds were expended in support of the Regional Humanities Center, bringing total expenditures to \$158,516.

Academic Improvement Fund: Four proposals for the expenditure of these funds were approved prior to the initiation of the academic prioritization process. Expenditures were made on three projects during 2003: Ecology and Evolutionary Analysis (\$39,361), International Quilt Study Center (\$60,885), and Survey Research

and Methodology (\$21,617). Total expenditures for these projects and a one-time equipment purchase for the College of Journalism and Mass Communication equal \$494,722.

In addition, the second installment of \$2,434,500 was made on the repayment of endowment principal that funded Othmer Hall and the Law Library. Finally, \$1,264,044 was paid to the University of Nebraska Foundation for management fees.

In sum, we continue to make progress in our implementation of the plans reported to the Board of Regents one year ago. We will continue that progress in using the Othmer-Topp endowment in a manner that we believe will conform to four principles:

- Conformance to the specifications of the Othmer-Topp will (i.e. the Othmer-Topp Chemical Engineering Building and Professorship of Chemical Engineering, and the Othmer-Topp addition to Schmid Law Library),
- Adherence to the programs agreed to by the Board of Regents (e.g. the distinguished professorships/chairs and the graduate fellowships),
- Use of the revenue from the Othmer-Topp endowment to leverage other funds (e.g. the distinguished professorships/chairs and the NEH Regional Humanities Center) to enhance the long-term impact of this most generous gift,
- Use of the revenue from the Othmer-Topp endowment to make meaningful the academic prioritization process without requiring a reallocation of state funds.

Finally, please find attached a table that responds to the specific charge of the January 13, 2001 Board of Regents action. I will be pleased to respond to any questions you or the Regents may have regarding this report.

Sincerely,

Harvey Perlman  
Chancellor and Harvey & Susan Perlman  
Alumni Professor of Law

xc: Terry Fairfield  
Vice Chancellors

**UNIVERSITY OF NEBRASKA - LINCOLN  
OTHMER-TOPP ENDOWMENT FUND**

EXPENDITURES OF ENDOWMENT INCOME INCURRED DURING CALENDAR YEAR 2003 AND  
CUMULATIVE EXPENDITURES OF ENDOWMENT INCOME AS OF DECEMBER 31, 2003

Description	Year Ended December 31, 2003	Cumulative Expenditures
<b>First Priority Expenditures</b>		
Othmer Professorship of Chemical Engineering	112,990	\$ 468,421
<b>Second Priority Expenditures</b>		
Campus-wide graduate fellowships	481,165	\$ 1,723,001
Estate legal services	498	\$ 126,381
Distinguished Professorships	142,205	\$ 367,596
NEH Regional Humanities Center Match	59,057	\$ 158,516
Academic Improvement Fund		
Ecology and Evolutionary Analysis	39,691	\$ 221,509
College of Journalism equipment	-	\$ 100,000
Survey Research and Methodology	21,617	\$ 21,617
International Quilt Study Center	60,885	\$ 151,596
	<u>\$ 918,109</u>	<u>\$ 3,338,638</u>

TO: The Board of Regents

Addendum X-D-12

Business Affairs

MEETING DATE: February 28, 2003

SUBJECT: University of Nebraska at Kearney  
Report of Gifts, Grants, Contracts and Bequests  
Accepted during the Quarter October 1, 2003 through December 31, 2003

RECOMMENDED ACTION: Report

Description:	A Gifts	B Grants	C Bequests	D Contracts	Totals
Instruction	8,670	64,175	0	0	72,845
Research	0	50,000	0	11,946	61,946
Public Service	0	249,028	0	4,700	253,728
Student Aid	386,238	203,335	0	0	589,573
Support Services					0
Administrative	1,000	0	0	0	1,000
Other	1,741	10,000	0	0	11,741
Not Designated	0	0	0	0	0
Subtotal	<u>\$397,649</u>	<u>\$576,538</u>	<u>\$0</u>	<u>\$16,646</u>	<u>\$990,833</u>

Gifts & Bequests of \$400,000 and more previously accepted by the Regents during the reported quarter:

Instruction	0	0	0	0	0
Research	0	0	0	0	0
Public Service	0	0	0	0	0
Student Aid	0	0	0	0	0
Supporting Services					
Administrative	0	0	0	0	0
Other	0	0	0	0	0
Not Designated	0	0	0	0	0
Subtotal	<u>\$0</u>	<u>\$0</u>	<u>\$0</u>	<u>\$0</u>	<u>\$0</u>

TOTAL	<u>\$397,649</u>	<u>\$576,538</u>	<u>\$0</u>	<u>\$16,646</u>	<u>\$990,833</u>
-------	------------------	------------------	------------	-----------------	------------------

A - Gifts \$2,500 and over are itemized on the attached page

B - Grants \$100,000 and over are itemized on the attached page

C - All bequests are itemized on the attached page

D - Contracts \$100,000 and over are itemized on the attached page

SPONSOR: Randal L. Haack, Vice Chancellor for Business & Finance

APPROVAL: \_\_\_\_\_  
Doug Kristensen, Chancellor

DATE: February 5, 2005

UNIVERSITY OF NEBRASKA AT KEARNEY  
 REPORT OF AWARDS  
 WHICH REQUIRE SEPARATE ITEMIZATION  
 ACCEPTED DURING THE QUARTER  
 October 1, 2003 through December 31, 2003

GIFTS \$2,500 AND OVER

<u>DONOR</u>	<u>PURPOSE</u>	<u>AMOUNT</u>
University of Nebraska Foundation	Student Aid	386,238
Kearney State Bank, Platte Valley State Bank, Ravenna State Bank	Instruction	8,370
SUBTOTAL		394,608
TOTAL AMOUNT OF GIFTS UNDER \$2,500		3,041
TOTAL GIFTS FOR THE QUARTER		<u>\$397,649</u>

GRANTS \$100,000 AND OVER

<u>GRANTOR</u>	<u>GRANTEE/DEPARTMENT</u>	<u>PURPOSE</u>	<u>AMOUNT</u>
U.S. Dept of Education	Financial Aid	Student Aid	\$103,382
U.S. Dept of Education	Education	Public Service	249,028
SUBTOTAL			352,410
TOTAL AMOUNT OF GRANTS UNDER \$100,000			224,128
TOTAL GRANTS FOR THE QUARTER			<u>\$576,538</u>

BEQUESTS

None

<u>DONOR</u>	<u>PURPOSE</u>	<u>AMOUNT</u>
TOTAL BEQUESTS FOR THE QUARTER		<u>None</u>

CONTRACTS \$100,000 AND OVER

<u>GRANTOR</u>	<u>GRANTEE/DEPARTMENT</u>	<u>PURPOSE</u>	<u>AMOUNT</u>
None			0
SUBTOTAL			0
TOTAL AMOUNT OF CONTRACTS UNDER \$100,000			16,646
TOTAL CONTRACTS FOR THE QUARTER			<u>\$16,646</u>

TOTAL AWARDS FOR THE QUARTER \$990,833

TO: The Board of Regents

Business Affairs

MEETING DATE: February 28, 2004

SUBJECT: University of Nebraska-Lincoln  
Report of Gifts, Grants, Contracts and Bequests accepted during the  
Quarter October 1, 2003 through December 31, 2003

RECOMMENDED ACTION: Report

Description	A Gifts	B Grants	C Bequests	D Contracts	Totals
Instruction	\$0	\$991,737	\$0	\$138,232	\$1,129,969
Research	0	13,062,117	0	3,722,198	16,784,315
Public Service	0	3,548,609	0	4,041,388	7,589,997
Administration	0	463,274	0	0	463,274
Student Services	0	100,000	0	500	100,500
Stu Financial Aid	0	71,985	0	0	71,985
Donations	0	0	0	0	0
	_____	_____	_____	_____	_____
Subtotals	\$0	\$18,237,722	\$ 0	\$7,902,318	\$26,140,040

Gifts and Bequests of \$ 400,000 & more previously accepted by the Regents during the reported quarter:

Instruction	\$0	0	0	0	\$0
Research	0	0	0	0	0
Public Service	0	0	0	0	0
Administration	0	0	0	0	0
Student Services	0	0	0	0	0
Stu Financial Aid	0	0	0	0	0
Donations	0	0	0	0	0
	_____	_____	_____	_____	_____
Subtotals	0	0	0	0	0
	_____	_____	_____	_____	_____
TOTAL	<u>\$0</u>	<u>\$18,237,722</u>	<u>\$ 0</u>	<u>\$7,902,318</u>	<u>\$26,140,040</u>



- A - Gifts of \$2,500 and more are itemized on the attached pages
- B - Grants of \$100,000 and more are itemized on the attached pages
- C - All bequests are itemized on the attached pages
- D - Contracts of \$100,000 and more are itemized on the attached pages

SPONSORS:

Prem S. Paul  
Vice Chancellor for Research

Christine A. Jackson  
Vice Chancellor for Business & Finance

APPROVAL:

---

Harvey Perlman, Chancellor  
University of Nebraska-Lincoln

DATE:

February 4, 2004

**UNIVERSITY OF NEBRASKA-LINCOLN  
 REPORT OF AWARDS  
 WHICH REQUIRE SEPARATE ITEMIZATION  
 ACCEPTED DURING THE QUARTER 10/1/03 – 12/31/03**

Gifts/Bequests \$2,500 and over

<u>Donor</u>	<u>Description</u>	<u>Amount</u>
	Total Gifts for the Quarter	<u>\$0</u>

\*\*\*\*\*

Grants \$100,000 and over

See attached sheet

Subtotal	\$13,754,198
Total amount of all Grants under \$100,000	<u>4,483,524</u>
Total Grants for the Quarter	<u>\$18,237,722</u>

\*\*\*\*\*

Contracts \$100,000 and over

See attached sheet

Subtotal	\$6,150,002
Total amount of all Contracts under \$100,000	<u>1,752,316</u>
Total Contracts for the Quarter	<u>\$7,902,318</u>

**University of Nebraska-Lincoln**  
**Quarterly Summary of Contracts Awarded Over \$100,000**  
**Subtotals by College and Department**  
**For the Quarter 10/01/03 - 12/31/03**

Dept/PI	Title	Budget Period	Funding Agency	Amount
<b>Education and Human Sciences</b>				
<b>Educational Psychology</b>				
Impara James	Poten for NRTs/CRTs/Class Students/Perf Categories	6/1/03 3/30/04	Ne Dept Education	\$ 143,451
<b>Engineering &amp; Technology</b>				
<b>Chemical Engineering</b>				
Meagher Michael	Fast-Track Product/Heptavalent Botulinum Vaccine	9/2/03 12/31/03	DynPort Vaccine Company	\$ 300,494
<b>Civil Engineering</b>				
Ganow Marcella	Ne ITS Program Support & ITS Architecture Maintenance	10/1/03 9/30/05	Ne Dept Roads	\$ 199,423
			<b>subtotal</b>	<b>\$ 499,917</b>
<b>IANR-Cooperative Extension</b>				
<b>Biological Systems Engineering</b>				
Hygnstrom Jan	Curric-Bas On-Site Wastewater Treat Syst Educ Prog	9/1/03 6/30/06	Ne Dept Environmental Quality	\$ 32,400
Woldt Wayne	Curric-Bas On-Site Wastewater Treat Syst Educ Prog	9/1/03 6/30/06	Ne Dept Environmental Quality	\$ 64,800
<b>Food Science &amp; Technology</b>				
Taylor Steve	Ne Industrial Competitiveness Serv/Ne Mfg Ext Part	7/1/03 6/30/04	Ne Dept Economic Development	\$ 145,000
<b>Natural Resources</b>				
Hubbard Kenneth	Operations & Services/Regional Climate Ctrs	7/1/03 6/30/04	Dept of Commerce-NOAA-Desert	\$ 140,000
<b>Southeast Research &amp; Extension Center</b>				
Skipton Sharon	Curric-Bas On-Site Wastewater Treat Syst Educ Prog	9/1/03 6/30/06	Ne Dept Environmental Quality	\$ 64,800
			<b>subtotal</b>	<b>\$ 447,000</b>
<b>IANR-Research</b>				
<b>Agronomy/Horticulture</b>				
Graef George	Devel of Improved Soybean Varieties for Nebraska	10/1/03 9/30/04	Ne Soybean Board	\$ 136,568
<b>Natural Resource Sciences</b>				
Verma Shashi	2003-04 Admin Budg/Grt Plns Reg Ctr/Glob Envir Chg	9/1/03 8/31/04	Dept of Energy-NIGEC	\$ 1,122,258
			<b>subtotal</b>	<b>\$ 1,258,826</b>

**Vice Chancellor for Academic Affairs****Public Policy Center**

Tomkins	Alan	Supervision/Impl Comprehens Hum Serv Plan (C-SIP)	7/1/03	6/30/04	City of Lincoln/Lancaster Co	\$	105,000
---------	------	---	--------	---------	------------------------------	----	---------

**University Television**

Lenzen	Steve	Advanc Learn Environ Research & Technology (ALERT)	4/15/00	9/30/04	General Services Administration	\$	446,400
--------	-------	--	---------	---------	---------------------------------	----	---------

Lenzen	Steve	Advanc Learn Environ Research & Technology (ALERT)	4/15/00	9/30/03	General Services Administration	\$	<u>2,906,300</u>
--------	-------	--	---------	---------	---------------------------------	----	------------------

<b>subtotal</b>							\$	3,457,700
-----------------	--	--	--	--	--	--	----	-----------

**Vice Chancellor for Research****Plant Science Initiative**

Mackenzie	Sally	Transgenic Induct/Cytoplasmic Male Sterility in Crop Plants	10/1/03	9/30/06	Dept of Agriculture-BRDC	\$	343,108
-----------	-------	---	---------	---------	--------------------------	----	---------

<b>Grand Total</b>							\$	<u>6,150,002</u>
--------------------	--	--	--	--	--	--	----	------------------

**University of Nebraska-Lincoln**  
**Quarterly Summary of Grants Awarded Over \$100,000**  
**Subtotals by College and Department**  
**For the Quarter 10/01/03 - 12/31/03**

Dept/PI	Title	Budget Period	Funding Agency	Amount
<b>Arts &amp; Sciences</b>				
<b>Biological Sciences</b>				
Blum Paul	Catabolite Repres/Archaeon Sulfolobus Solfataricus	12/30/03 2/28/05	NSF	\$ 148,044
Cerutti Heriberto	Transcript Gene Silenc/Chlamydomonas & Arabidopsis	12/30/03 2/28/05	NSF	\$ 135,000
<b>Physics and Astronomy</b>				
Leslie-Pelecky Diandra	Track 2 GK-12:Project Fulcrum:Phase II	7/1/04 6/30/05	NSF	\$ 220,694
<b>Sociology</b>				
Tyler Kimberly	Neglect/Abuse Histories Among Homeless Young Adult	12/1/03 11/30/04	DHHS-NIH-Nat Inst Mental Health	\$ 129,569
			<b>subtotal</b>	<b>\$ 633,307</b>
<b>Chancellor's Office</b>				
<b>Sheldon Art Gallery</b>				
Driesbach Janice	Roxy Paine Maquette	7/1/03 6/30/04	U. N. Foundation	\$ 111,270
<b>Education and Human Sciences</b>				
<b>Educational Psychology</b>				
Buckendahl Chad	Setting Achievement Levels for PACT & EOCEP	5/1/03 12/31/03	So Carolina Dept of Education	\$ 219,985
<b>Special Education &amp; Communication Disorders</b>				
Bernthal John	Barkley Trust Fund	7/1/03 9/30/03	U. N. Foundation	\$ 397,511
Bernthal John	Barkley Trust Fund	10/1/03 12/31/03	U. N. Foundation	\$ 532,717
Eccarius Malinda	Mountain-Prairie Upgrade Partnership	8/15/03 8/14/04	Dept of Education	\$ 275,082
Epstein Michael	Wraparound Serv/Elem School Students in School Set	1/1/04 12/31/05	Dept of Education	\$ 358,927
Siegel Ellin	Implement Ne State Plan/Autism Spectrum Disorders	10/1/03 9/30/04	Ne Dept Education	\$ 152,004
<b>Teaching, Learning &amp; Teacher Education</b>				
Buck Gayle	Track 2 GK-12:Project Fulcrum:Phase II	7/1/04 6/30/05	NSF	\$ 220,694
			<b>subtotal</b>	<b>\$ 2,156,920</b>
<b>Engineering and Technology</b>				
<b>Chemical Engineering</b>				
Meagher Michael	Antibodies/Countermeas for C.botulinum Neurotoxin	3/1/02 3/31/06	DOD-Army Medical Research	\$ 5,034,000

**Civil Engineering**

Faller	Ronald	Eval/Install/Steel Tube & Foam Energy Reduc Barrier (SAFER)	7/31/03	7/31/05 Indianapolis Racing League	\$	427,333
--------	--------	---	---------	------------------------------------	----	---------

**Construction Management**

Stentz	Terry	Transient Risk Factors for RR Accidents & Injuries	10/1/03	9/30/04 Dept of Transportation-FRA	\$	159,800
--------	-------	--	---------	------------------------------------	----	---------

**Dean's Office - Engineering & Technology**

Elias	Samy	Track Stability Assessment	8/29/03	8/28/05 Dept of Transportation-FRA	\$	46,194
-------	------	----------------------------	---------	------------------------------------	----	--------

Elias	Samy	Transient Risk Factors for RR Accidents & Injuries	10/1/03	9/30/04 Dept of Transportation-FRA	\$	9,400
-------	------	--	---------	------------------------------------	----	-------

**Electrical Engineering**

Palmer	Robert	Track Stability Assessment	8/29/03	8/28/05 Dept of Transportation-FRA	\$	207,875
--------	--------	----------------------------	---------	------------------------------------	----	---------

**Industrial & Management Systems Engineering**

Riley	Michael	Transient Risk Factors for RR Accidents & Injuries	10/1/03	9/30/04 Dept of Transportation-FRA	\$	18,800
-------	---------	--	---------	------------------------------------	----	--------

**Mechanical Engineering**

Farritor	Shane	Track Stability Assessment	8/29/03	8/28/05 Dept of Transportation-FRA	\$	207,875
----------	-------	----------------------------	---------	------------------------------------	----	---------

**School of Engineering Technology**

Tiller	Dale	Converg Redundant Sens Network Info/Impr Bldg Ctrl	12/1/03	11/30/04 Dept of Energy-Natl Energy Tech	\$	104,521
--------	------	--	---------	--	----	---------

<b>subtotal</b>	\$	6,215,798
-----------------	----	-----------

**IANR-Cooperative Extension****Agricultural Economics**

Eberspacher	Beth	Women in Agriculture Risk Mgmt Educ Initiative	9/30/03	9/30/04 Dept of Agriculture-RMA-FCIC	\$	150,000
-------------	------	--	---------	--------------------------------------	----	---------

Jose	H. Douglas	Trade Adjustment Assistance Program	9/15/03	9/14/06 Dept of Agriculture-RMA	\$	235,000
------	------------	-------------------------------------	---------	---------------------------------	----	---------

Jose	H. Douglas	North Central Regional Risk Management Educ Ctr	9/15/01	9/14/04 Dept of Agriculture-CSREES	\$	1,030,146
------	------------	---	---------	------------------------------------	----	-----------

**Biological Systems Engineering**

Koelsch	Richard	Livestock & Poultry Environ Steward Curric Contin Proj	9/15/03	9/14/05 Dept of Agriculture-CSREES	\$	111,111
---------	---------	--	---------	------------------------------------	----	---------

**Southeast R & E Center**

Tonn	Steven	Commun-Base Watershed Mgmt Prog/Standing Bear Lake	4/1/01	6/30/05 Ne Dept Environmental Quality	\$	150,000
------	--------	--	--------	---------------------------------------	----	---------

<b>subtotal</b>	\$	1,676,257
-----------------	----	-----------

**IANR-Research****Biochemistry**

Gladyshev	Vadim	Methionine Sulfoxide Reduction, Selenium & Aging	1/1/04	12/31/04 DHHS-NIH-Nat Inst Aging	\$	253,750
-----------	-------	--	--------	----------------------------------	----	---------

Weeks	Donald	Devel of Crops Tolerant to Treatment with Dicamba	5/1/03	12/31/03 United Agri Products	\$	120,637
-------	--------	---	--------	-------------------------------	----	---------

**Center for Grassland Studies**

Schacht	Walter	Grasslands Ecological Monitoring System	10/1/03	9/30/05 Dept of Agriculture-RMA-FCIC	\$	608,880
---------	--------	---	---------	--------------------------------------	----	---------

**Food Science and Technology**

Hutkins	Robert	Funct Activ of Prebiotic Oligosaccharides in Foods	11/15/03	11/14/05	Dept of Agriculture-NRICGP	\$	140,000
---------	--------	--	----------	----------	----------------------------	----	---------

**Nutrition & Health Sciences**

Zempleni	Janos	Essential Role of Biotin in Cell Proliferation	1/1/04	12/31/04	DHHS-NIH-NIDDK	\$	145,000
Zempleni	Janos	Vitamin-Dependent Modifications of Histones	1/1/04	12/31/04	DHHS-NIH-NIDDK	\$	272,161

**Textiles, Clothing & Design**

Yang	Yiqi	Resist Sulfur Dyed Fabrics/Oxidative Bleach & Acid Tender	8/1/03		Procter & Gamble	\$	300,618
------	------	---	--------	--	------------------	----	---------

**Veterinary & Biomedical Sciences**

Jones	Clinton	Regul of Latency-React Cycle by BHV-1 LR Gene	12/15/03	12/14/06	Dept of Agriculture-CSREES	\$	319,600
Smith	David R.	Beef Cattle Herds w/Johne's Disease/Risk Factors for Herd	9/9/03	9/8/04	Dept of Agriculture-APHIS	\$	<u>100,000</u>

**subtotal** \$ 2,260,646

**Vice Chancellor for Academic Affairs****Public Policy Center**

Shank	Nancy	Bridging the Gap:Info & Refer Database Interoper	10/1/03	9/30/05	Dept of Commerce-NTIA	\$	600,000
-------	-------	--	---------	---------	-----------------------	----	---------

**Vice Chancellor for Student Affairs****Vice Chancellor for Student Affairs**

Lee	Eric	Upward Bound-Northeast Nebraska-Expansion Initiative	9/1/03	8/31/04	Dept of Education	\$	100,000
-----	------	--	--------	---------	-------------------	----	---------

**Grand Total** \$ 13,754,198

TO: The Board of Regents

Business Affairs

MEETING DATE: February 28, 2004

SUBJECT: University of Nebraska Medical Center  
Report of Gifts, Grants, Contracts and Bequests Accepted During the  
Quarter October 1, 2003 through December 31, 2003

RECOMMENDED ACTION: Report

Description	A Gifts	B Grants	C Bequests	D Contracts	TOTAL
Instruction	\$289,864	\$1,409,081	\$0	\$923,353	\$2,622,297
Research	\$162,220	\$6,288,405	\$0	\$3,257,242	\$9,707,867
Public Service	\$82,799	\$565,632	\$0	\$206,678	\$855,109
Student Aid	\$1,000	\$4,748	\$0	\$0	\$5,748
Other	<u>\$125</u>	<u>\$0</u>	<u>\$0</u>	<u>\$0</u>	<u>\$125</u>
Subtotal	<u>\$536,008</u>	<u>\$8,267,866</u>	<u>\$0</u>	<u>\$4,387,273</u>	<u>\$13,191,146</u>

Awards of \$400,000 and more previously accepted by the Regents during the reported quarter.

Instruction	\$0	\$0	\$0	\$0	\$0
Research	\$0	\$0	\$0	\$0	\$0
Public Service	\$0	\$0	\$0	\$0	\$0
Student Aid	\$0	\$0	\$0	\$0	\$0
Other	\$0	\$0	\$0	\$0	\$0
Subtotal	<u>\$0</u>	<u>\$0</u>	<u>\$0</u>	<u>\$0</u>	<u>\$0</u>
Total	<u>\$536,008</u>	<u>\$8,267,866</u>	<u>\$0</u>	<u>\$4,387,273</u>	<u>\$13,191,146</u>

A - Gifts of \$2,500 or more are itemized. See attachment(s) for itemized listings.

B - Grants of \$100,000 or more are itemized. See attachment(s) for itemized listings.

C - Bequests are itemized. See attachment(s) for itemized listings.

D - Contracts of \$100,000 or more are itemized. See attachment(s) for itemized listings.

SPONSOR: Thomas H. Rosenquist, Ph.D.  
Vice Chancellor for Research

APPROVAL: \_\_\_\_\_  
Harold M. Maurer, M.D., Chancellor  
University of Nebraska Medical Center

DATE: February 5, 2004



**University of Nebraska Medical Center**

GIFTS OF \$2,500 OR MORE

OCTOBER 1, 2003 - DECEMBER 31, 2003

<u>DONOR</u>	<u>PURPOSE</u>	<u>AMOUNT</u>
Estate of Henry F. Reichstein	HENRY REICHSTEIN ESTATE	\$77,479
Hattie B. Munroe Foundation	THE HB MONROE FDN	\$67,298
Hattie B. Munroe Foundation	HB MUNROE FDN/36378	\$50,000
Hattie B. Munroe Foundation	HBMUNROE FDN	\$50,000
Hattie B. Munroe Foundation	HBMUNROE FDN	\$35,000
Hattie B. Munroe Foundation	HB MUNROE FDN/36378	\$35,000
Fujisawa Healthcare	MARKETING RESOURCE & SOLUTIONS	\$25,000
Hattie B. Munroe Foundation	HBMUNROE FDN	\$25,000
Hattie B. Munroe Foundation	HB MUNROE FDN/36378	\$25,000
AVI Biopharma, Inc.	AVI BIOPHARMA/RESEARCH DONATIO	\$10,255
Douglas County Board of Education	BD OF ED DOUGLAS/EVERY SHOT	\$10,000
Evanston NW Healthcare	EVANSTON NORTHWESTERN HLT CARE	\$7,870
Miscellaneous Donations greater than \$100	STEPHEN RENNARD/HONORAR/DON	\$7,000
US Surgical	US SURGICAL/ED DONATION	\$5,000
US Surgical	US SURGICAL/MD TRAINING	\$5,000
Ladies Auxillary VFW	DEPT OF NE/LADIES AUX VFW	\$4,306
Ligand Pharmaceuticals, Inc.	LIGAND PHARMACEUTICALS	\$4,000
Guidant/Cardiac Pacemakers, Inc.	GUIDANT/EDUCATIONAL GRANT	\$3,600
Millenium Pharmaceuticals, Inc.	MILLENIUM PHARM/ED GRANT	\$3,000
Miscellaneous Donations greater than \$100	SAMUEL EISENSTAT/LYMPOMA RSCH	\$2,700
AstraZeneca / PharmaSeek	ASTRA ZENECA/EDUCATION	\$2,500
Boehringer Ingelheim Pharmaceuticals, Inc.	BOEHRINGER	\$2,500
Fraternal Order of Eagles	FRATERNAL ORDER OF EAGLES	\$2,500

**UNIVERSITY OF NEBRASKA MEDICAL CENTER****GRANTS \$100,000 OR MORE****October 1, 2003 - December 31, 2003**

<b>SPONSOR</b>	<b>GRANTEE DEPARTMENT</b>	<b>TITLE</b>	<b>AMOUNT</b>
U.S. Department of Energy	Surinder Batra, PhD Biochem and Molecular Biology	Genetically Engineered Multivalent Single Chain Antibody Constructs for Cancer Therapy	\$310,000
U.S. Army	Gloria Borgstahl-Kramer Eppley Inst Mol Cell Struc Biology	Understanding the Role of Replication Protein A and RAD52 in Breast Cancer	\$104,964
NASA	Gloria Borgstahl-Kramer Eppley Institute	Searching for the Best Protein Crystals: Integration of Synchrotron-based Crystal Quality Measurements and Macromolecular Structure Determination	\$186,000
U.S. Department of Agriculture	John Davis, PhD Obstetric/Gynecology	Intracellular Signals Regulating Follicle Growth	\$121,074
DHHS/NIH/NIDDK	Ira Fox, MD Surgery	Cellular Engineering of Hepatocyte Cell Lines	\$286,062
DHHS/NIH/NIDCR	Keith Johnson, PhD COD-Oral Biology	Cadherins in Oral Squamous Cell Carcinomas	\$367,500
DHHS/NIH/NICHD	Claudia Kappen, PhD Genetics Cell Biology & Anatomy	Molecular Mechanisms in Diabetic Embryopathy	\$330,750
DHHS/NIH/NCI	Kristine Mcvea, MD MPH Family Medicine Univ Med Assoc	Teen Counselors for Smoking Cessation	\$485,550

**UNIVERSITY OF NEBRASKA MEDICAL CENTER****GRANTS \$100,000 OR MORE****October 1, 2003 - December 31, 2003**

<b>SPONSOR</b>	<b>GRANTEE DEPARTMENT</b>	<b>TITLE</b>	<b>AMOUNT</b>
DHHS/NIH/NINDS	Kalipada Pahan, PhD COD-Oral Biology	Activation of NF-kB in Glial Cells and CNS of EAE	\$252,186
DHHS/NIH/NCI	A Rizzino, PhD Eppley Institute	Regulation of Growth Factors and Embryogenesis	\$248,430
DHHS/NIH/NCRR	Shelley Smith, PhD MMI HBM Molecular Genetics	The Molecular Biology of Neurosensory Systems	\$2,129,216
DHHS/NIH/NIAID	Joyce Solheim, PhD Eppley Inst Mol Cell Struc Biology	Regulation of Antigen Presentation by APLP-2	\$183,750
DHHS/NIH/NCCAM	Bela Toth, DVM Eppley Institute	Prevention of Cancer by Coriolus versicolor Mushroom	\$220,500
DHHS/NIH/NHLBI	Julie Vose, MD Int Med Oncology/Hematology	Nebraska Blood & Marrow Transplant Research Network	\$405,000
DHHS/NIH/NCI	Kay-Uwe Wagner, PhD Eppley Institute	Tumor Susceptibility Gene 101 Deficiency and Neoplasia	\$261,660

**UNIVERSITY OF NEBRASKA MEDICAL CENTER****CONTRACTS \$100,000 OR MORE****October 1, 2003 - December 31, 2003**

<b>SPONSOR</b>	<b>GRANTEE DEPARTMENT</b>	<b>TITLE</b>	<b>AMOUNT</b>
Atrix Laboratories, Inc.	Janina Baranowska-Kortylewi Radiation Oncology	Feasibility Study Agreement: Development of 125IUdR - Atrigel for cancer therapy	\$111,433
GlaxoSmithKline	William Burke, MD UPS Psychiatry-Academic	A 7 Month, Multicenter, Parallel, Double-Blind, Placebo-Controlled Comparison of 150-300 mg/day of Extended-Release Bupropion Hydrochloride and Placebo for the Prevention of Seasonal Depressive Episodes in Subjects with a History of Seasonal (cont.)	\$129,480
Pharmacia & Upjohn Company	Carl Camras, MD Ophthalmology	Comparison of the Effects of Latanoprost and Timolol on Aqueous Humor Dynamics in Ocular Hypertensive Patients	\$144,901
University of Nebraska - Lincoln	Pawel Ciborowski Biochem and Molecular Biology	COBRE - Recruitment Project	\$293,386
Bristol-Myers Squibb Company	Samuel Cohen, MD PhD Pathology/Microbiology	Study No. DM03051 - BMS-298585: Twenty-One Month Investigative Timecourse Study of Urinary Bladder Effects in Male Rats	\$130,533
Bristol-Myers Squibb Company	Samuel Cohen, MD PhD Pathology/Microbiology	Study No. DM03050 - BMS - 298585: Three-Month Oral Investigative Urinary Bladder Study in Young Versus Aged Male and Female Rats	\$201,531
University of Rochester	Howard Gendelman, MD Pathology/Microbiology	Core B: Cell, Tissue & Animal Core - Novel HIV Therapies	\$210,294
GlaxoSmithKline	Stephen Rennard, MD Int Med Pulmonary	Smoking Cessation in COPD	\$750,000

**UNIVERSITY OF NEBRASKA MEDICAL CENTER**  
**CONTRACTS \$100,000 OR MORE**  
**October 1, 2003 - December 31, 2003**

<b>SPONSOR</b>	<b>GRANTEE DEPARTMENT</b>	<b>TITLE</b>	<b>AMOUNT</b>
Pfizer, Inc.	Stephen Rennard, MD Int Med Pulmonary	A Twelve-week, double-blind, placebo-controlled, randomized, multicenter study with follow-up evaluating the safety and efficacy of varenicline tartrate (CP-526,555) in comparison to Zyban for smoking cessation	\$489,888
Alcon Research, Ltd.	Carol Toris, PhD Ophthalmology	Glaucoma Monkey Model	\$100,000

TO: Board of Regents

Business Affairs

MEETING DATE: February 28, 2004

SUBJECT: University of Nebraska at Omaha  
Report of Gifts, Grants, Contracts and Bequests  
Accepted During the Quarter October 1, 2003  
through December 31, 2003

RECOMMENDED ACTION: Report

DESCRIPTION	<u>A Gifts</u>	<u>B Grants</u>	<u>C Bequests</u>	<u>D Contracts</u>	<u>Total</u>
Instruction	\$ 34,460			7,600	42,060
Research		211,100		1,539,573	1,750,673
Public Service	139,204	105,778		626,411	871,393
Student Aid	48,107	89,408		2,651	140,166
Supporting Services Administrative	20,922				20,922
Other	500			22,416	22,916
Not Designated					0
Subtotal	<u>243,193</u>	<u>406,286</u>	<u>0</u>	<u>2,198,651</u>	<u>2,848,130</u>

Gifts & Bequests of \$400,000 and more previously accepted by the Regents during the reported quarter:

Instruction					0
Research					0
Public Service					0
Student Aid					0
Supporting Services Administrative					0
Other					0
					0
	<u>0</u>	<u>0</u>	<u>0</u>	<u>0</u>	<u>0</u>
TOTAL	\$ <u>243,193</u>	<u>406,286</u>	<u>0</u>	<u>2,198,651</u>	<u>2,848,130</u>

A - Gifts \$2,500 and over are itemized on the attached page  
B - Grants \$100,000 and over are itemized on the attached page  
C - All Bequests are itemized on the attached page  
D - Contracts \$100,000 and over are itemized on the attached page

SPONSOR: James R. Buck  
Vice Chancellor for Administration

APPROVAL: \_\_\_\_\_  
Nancy Belck, Chancellor  
University of Nebraska at Omaha

DATE: February 5, 2004

UNIVERSITY OF NEBRASKA AT OMAHA  
 REPORT OF AWARDS  
 WHICH REQUIRE SEPARATE ITEMIZATION  
 ACCEPTED DURING THE QUARTER  
 OCTOBER 1, 2003 THROUGH DECEMBER 31, 2003

Gifts \$2,500 and over

<u>Donor</u>	<u>Purpose</u>	<u>Amount</u>
Alumni Association	Scholarships	\$ 22,358
University of Nebraska Foundation	College of Business	4,999
University of Nebraska Foundation	Information Science and Technology	25,000
University of Nebraska Foundation	Athletics	9,200
Omaha Press Club	Scholarships	5,500
Doris Sautter	Scholarships	11,600
Alan & Marcia Baer Family Charitable Trust	UNO Television	5,000
Nebraska Public Television	UNO Television	3,440
Harper Family Foundation	Bethsaida Excavation Project	5,000
Omaha World Herald	World Herald Banquet	5,000
Mr. and Mrs. Edward Robinson	KVNO	3,000
Subtotal		100,097
Total amount of gifts under \$2,500		143,096
Total Gifts for the Quarter		<u>\$ 243,193</u>

Grants \$100,000 and over

<u>Grantor</u>	<u>Grantee/Dept</u>	<u>Purpose</u>	<u>Amount</u>
NASA	Aviation Institute	Aeronautics Education Research Alliance	\$ 700,000
US Department of Defense	NBDC	Procurement Technical Assistance	342,528
National Institutes of Health	Arts & Sciences	Neuroscience Expositions	264,701
Corporation for Public Broadcasting	KVNO	Community Service Grant	120,245
Department of Health & Human Services via UNMC	Biology	Functional Genomics	225,723
Department of Health & Human Services via UNMC	IS&T	Functional Genomics	169,859
Subtotal			1,823,056
Total amount of grants under \$100,000			375,595
Total Grants for the Quarter			<u>\$ 2,198,651</u>

Bequests

<u>Donor</u>	<u>Purpose</u>	<u>Amount</u>
--------------	----------------	---------------

Contracts \$100,000 and over

<u>Grantor</u>	<u>Grantee/Dept</u>	<u>Purpose</u>	<u>Amount</u>
US Department of Justice	Criminal Justice	Strategic Planning Handbook	\$ 145,100
Council of the Great City Schools	Counseling	AmeriCorps	105,778
Subtotal			250,878
Total amount of contracts under \$100,000			155,408
Total Contracts for the Quarter			<u>\$ 406,286</u>

TO: The Board of Regents

Business Affairs

MEETING DATE: February 28, 2004

SUBJECT: Report of Bids and Contracts

RECOMMENDED ACTION: Report

PREVIOUS ACTION: None

EXPLANATION: The attached report is a summary of bids and contracts as provided by the campuses pursuant to Section 6.4 of the *Bylaws of the Board of Regents of the University of Nebraska* for the period ended February 5, 2004.

The report outlines the following: type of action; campus; description and use of the product, service, or project; funding source; approved budget amount; contract amount; contractor or vendor; and a bid review or bid explanation if the low responsible bid was not accepted.

PROJECT COST: None

SOURCE OF FUNDS: None

APPROVAL:

\_\_\_\_\_  
David E. Lechner  
Vice President for Business & Finance

DATE: February 5, 2004



University of Nebraska  
Business Affairs Report - Bids & Contracts

Period Ending: February 5, 2004  
Meeting Date: February 28, 2004

Type of Action	Campus	Description	Funding Source	Approved Budget Amount	Contract Amount	Contractor/ Vendor	Bid Review or Explanation
Construction Contract	UNL	University Housing. Renovation of Selleck Dining Area	Revenue Bonds	\$ 6,538,400	\$ 4,256,000	Lueder Construction Company	Lowest responsible bidder.
	UNL	Nebraska Hall Fire Alarm Upgrade	LB309	\$ 462,500	\$ 236,545	Commonwealth Electric Co.	Lowest responsible bidder.
	UNL	University Housing. 16th & Y Student Housing "Husker Village"	Revenue Bonds	\$ 30,470,000	\$ 20,569,000	Sampson Construction Company	Lowest responsible bidder.
	UNL	University Police. University Police Relocation	Annual Operating Costs	\$ 1,900,000	\$ 931,600	Rogge General Contractors	Lowest responsible bidder.
	UNMC	Student Apartments	Facilities Management - Revenue Bonds	\$ 4,272,000	\$ 3,520,068	Dicon Corp.	Lowest responsible bidder.
Personal Property Procurement	UNL	Vet and BioMedical Sciences. Acquisition of a Thermal Cycler	State Aided Non-Revolving Funds	N/A	\$ 44,209	Bio-Rad Labs, Inc.	Sole source. This vendor was chosen because they best meet specifications for research needs.
	UNL	Chemical Engineering/Biological Process Development Facility. Acquisition of a RiboPrinter System	U.S. Army Grant Funds (Plant Funds)	N/A	\$ 126,636	DuPont Qualicon	Sole source. This vendor was chosen because they are the only vendor to have automated the bacterial identification process.
	UNL	Biotechnology Department. Acquisition of a Gene Chip System Upgrade	State Aided Non-Revolving Funds	N/A	\$ 105,219	Affymetrix	Sole source. This vendor was chosen because they are the only vendor that can provide the upgrade.

Type of Action	Campus	Description	Funding Source	Approved Budget Amount	Contract Amount	Contractor/ Vendor	Bid Review or Explanation
Personal Property Procurement	UNL	Industrial Management Systems Engineering/CNMR. Acquisition of a ProMetal Rapid Tooling System	State Aided Non-Revolving Funds	N/A	\$ 166,667	Extrude Hone, Corp.	Sole source. This vendor was chosen because they are the only vendor that can manufacture a commercially available system that works with various metals.
	UNL	Biochemistry. Acquisition of an Isothermal Microcalorimeter	Redox Grant	N/A	\$ 76,900	MicroCal, LLC	Sole Source. Only vendor that that has the specifications to accomplish this research.
	UNL	School of Biological Sciences. Acquisition of Molecular Imager FX Pro Plus Multilmager System	NIH Grant	N/A	\$ 125,360	Bio-Rad Labs, Inc.	Sole Source. Vendor has more more diagnostic applications than any other vendor.
	UNL	Electrical Engineering. Acquisition of Pulsed Laser Deposition System	Air Force Office of Scientific Research Grant	N/A	\$ 44,310	Neocera, Inc.	Sole Source. Only vendor that has system specifications to produce oxide thin films.
			Operating		\$ 24,400		
			Operating		\$ 17,717		
			Cluster Grant (child)		\$ 9,800		
		UNMC	Calcium Imaging System for Genetics & Cell Biology & Anatomy to visually analyze calcium uptake & its effect on cells	UNMC Research Infrastructure Funding	\$ 188,691	\$ 188,691	Boyce Scientific, Inc.
	UNMC	Microarray imaging scanners(2) for DNA microarray imaging analysis by DRC researchers	Tobacco Settlement & Research Infrastructure Funding	\$210,037	\$210,037	Amersham Biosciences, Inc.	Lowest responsible bidder.
	UNMC	Gas Chromatograph Mass Spectrometer to be used for lipid analysis by Pediatrics - Inherited Metabolic Disease	College of Medicine - Operating Funds	\$109,198	\$109,198	Agilent Technologies	Lowest responsible bidder.
	UNMC	Animal Transfer Stations, Biological Safety Cabinets, Surgery, Lights, Tunnel Washer, Cage Washer, Steilizers	Durham Research Center	\$74,899,500	\$1,043,854	Innovative Laboratory Systems, Inc.	Lowest responsible bidder.

TO: The Board of Regents

Business Affairs

MEETING DATE: February 28, 2004

SUBJECT: Semi-Annual Report of Licenses

RECOMMENDED ACTION: Report

EXPLANATION: The attached report is a summary of licenses as provided by the campuses pursuant to Regental Policy 6.3.1.4.v. of the Board of Regents of the University of Nebraska for the period ended December 31, 2003.

The report outlines the following: type of action; campus; description and use of the product, service, or project; term of the license, and financial terms of the license.

APPROVAL:

---

David E. Lechner  
Vice President for Business & Finance

DATE: February 5, 2004

**SEMI-ANNUAL REPORT OF LICENSES**  
**7/1/03 THROUGH 12/31/03**

<b>Type of Action</b>	<b>Campus</b>	<b>Licensee</b>	<b>Description of Product/Service</b>	<b>Term of License</b>	<b>Contractual Requirements</b>
Intellectual Property License	UNL	Hughes Brothers, Inc.	Precast Concrete Sandwich Panels	Life of Patents	Royalties
Intellectual Property License	UNL	Beacon Analytical Systems, Inc.	Antibodies for Allergen Detection	5 years	Cash Payment & Royalties
Intellectual Property License	UNL	Agri-Tech Systems, Inc.	Method for Deriving Monocalcium & Dicalcium Phosphate from Eggshells	Life of Patents	Royalties
Intellectual Property License	UNL	Crosbyton Seed Co.	Pearl Millet	5 years	Royalties
Intellectual Property License	UNL	Northeast Research & Extension Center	Computer Software	Life of the IP	Cash Payment
Intellectual Property License	UNMC	ImaRX Therapeutics, Inc.	Non-PESDA Microbubbles for the Treatment of Thrombosis	Life of Patents	Royalty bearing
Intellectual Property License	UNMC	Integrated Academic Systems, L.L.C.	Searchable Database for Personnel Management at Academic Medical Centers	Unlimited	Royalty bearing
Intellectual Property License	UNMC	TriMed Research, Inc.	Mammary-Associated Serum Amyloid A3 Protein for Inhibiting Gastrointestinal Pathogens	Patent life	Royalty bearing

TO: The Board of Regents  
Business Affairs

MEETING DATE: February 28, 2004

SUBJECT: Schematic Design Report for the Renovation of the University of  
Nebraska-Lincoln (UNL) 1700 Y Street Building for Printing Services

RECOMMENDED ACTION: Report

PREVIOUS ACTION: August 9, 2003 - The Board approved the Program Statement for the  
Renovation of the UNL 1700 Y Street Building for Printing Services.

EXPLANATION: The project is to renovate the former Food Stores space at 1700 Y Street  
in order to consolidate Printing and Copy Services at this location.  
Printing Services is currently located in the basement of Nebraska Hall.  
Consolidating Printing and Copy Services with other business services  
will reuse an existing facility and improve efficiency.

Proposed start of construction: May 2004  
Proposed completion of construction: December 2004

PROJECT COST: \$713,000

ON-GOING FISCAL  
IMPACT: Annual Operating Costs No increase  
2% Assessment None

SOURCE OF FUNDS: Auxiliaries and Services Funds

SPONSOR: Christine A. Jackson  
Vice Chancellor for Business & Finance

APPROVAL: \_\_\_\_\_  
Harvey Perlman, Chancellor  
University of Nebraska-Lincoln

DATE: February 4, 2004

## **1700 Y Street Building for Printing Services**

University of Nebraska-Lincoln

### **Project Description**

The schematic design for Printing and Copy Services will relocate the press and bindery functions from the basement of Nebraska Hall and consolidate them with other Printing and Copy Services now located at the 1700 Y Street Building. The former warehouse for Food Stores will be renovated to house the press and bindery functions, and to provide space for receiving and delivery functions, and other support areas. The renovated space will house these functions between the north warehouse area and the south office and administrative areas. The existing west dock area will be retained and shared with Mail and Distribution Services.

The project consists of interior renovation with upgrades in the mechanical and electrical systems to accommodate the press and bindery equipment.

At the conclusion of this project, the consolidation of the Printing and Copy Services will be complete.

### **Project Cost**

Total Project Cost: \$713,000

### **Project Schedule**

Schematic Design Complete	October 22, 2003
Design Development Complete	November 28, 2003
Construction Documents Complete	January 23, 2004
Start of Construction	May 3, 2004
Substantial Completion	November 2004

TO: The Board of Regents  
Business Affairs

MEETING DATE: February 28, 2004

SUBJECT: Design Development Report for Student Apartments – 38<sup>th</sup> Avenue and Jackson Street at the University of Nebraska Medical Center (UNMC).

RECOMMENDED ACTION: Report

PREVIOUS ACTION: June 7, 2003 – The Board approved the program statement and project budget for the design and construction of a new student apartment building project on the UNMC campus in Omaha, Nebraska.

EXPLANATION: Design development has been completed. This project will construct two new three-level student apartment buildings located on the eastern edge of the UNMC Campus on 38<sup>th</sup> Avenue between Jackson Street and Jones Street.

The two buildings will be similar in design, facing a shared courtyard in the center of the site. Each building will contain three levels with 10 apartments per level for a project total of 60 units, including 12 two-bedroom units and 48 one-bedroom units. All apartment units will be equipped with kitchen and laundry appliances. Each building will include a storm shelter.

The buildings will be constructed of conventional wood frame construction. The building exteriors will be clad with of a combination of brick veneer and low maintenance siding and roofed with composition shingles. The windows will be energy efficient and low maintenance. Heating and air conditioning will be accomplished through the use of a heat pump and supplementary furnace serving each apartment. A fire sprinkler system will be installed. The two buildings will be managed and maintained by UNMC.

Construction has started on the project under a conventional low bid contract and is scheduled to be completed in September 2004.

PROJECT COST: \$4,850,000

SOURCE OF FUNDS: Revenue Bonds\  
Auxiliaries and Services Funds

SPONSOR: Donald S. Leuenberger  
Vice Chancellor for Business & Finance

APPROVAL: \_\_\_\_\_  
Harold M. Maurer, M.D., Chancellor  
University of Nebraska Medical Center

DATE: February 2, 2004

Student Apartments at 38<sup>th</sup> Avenue and Jackson Street  
 University of Nebraska Medical Center  
 Omaha, Nebraska

*Design Development Report*

---

**PROJECT SCOPE**

This project provides for the construction of two student apartment buildings to be located on the east edge of the UNMC Campus on 38<sup>th</sup> Avenue between Jackson St. and Jones St.

The project will require site development consisting of the demolition of small three houses and one six-unit apartment building. Geotechnical investigations conclude that the site will require extensive excavation and re-compaction of existing soil to a depth of 8 feet.

The project will construct two similar buildings facing a shared courtyard in the center of the site. Each building will contain three levels with 10 apartments per level for a project total of 60 units, including 12 two-bedroom units and 48 one-bedroom units. All apartment units will be equipped with kitchen and laundry appliances. Each building will include a storm shelter.

The buildings will be constructed of conventional wood frame construction. The Level-1 floor structure will be concrete slab on grade, with levels two and three consisting of lightweight gypsum concrete topping over frame construction. The building exteriors will be clad with a combination of brick veneer and low maintenance siding and roofed with composition shingles. The windows will be energy efficient and low maintenance. Heating and air conditioning will be accomplished through the use of a heat pump and supplementary furnace serving each apartment. A fire sprinkler system will be installed. Utilities (electricity and gas) will be metered separately for each apartment.

**BUILDING INFORMATION**

1. Net Building size by categorical room code:

	Use Code	Program Statement	Design Development	% Variance
Circulation	WWW	10,299 NSF	7,460 NSF	
Residential Facilities	950	43,899 NSF	42,600 NSF	
Service Area	955	956 NSF	500 NSF	
<b>Estimated Total</b>		<b>55,154 NSF</b>	<b>50,560 NSF</b>	<b>-8.3%</b>

2. Gross Building Size:

	Program Statement	Design Development	% Variance
<b>Estimated Total</b>	<b>61,119 GSF</b>	<b>58,350 GSF</b>	<b>-4.5%</b>



3. Building Efficiency:

Program Statement	90%
Design Development	87%

**PROJECT BUDGET**

The total project budget is \$4,850,000 and remains unchanged from the Program Statement.

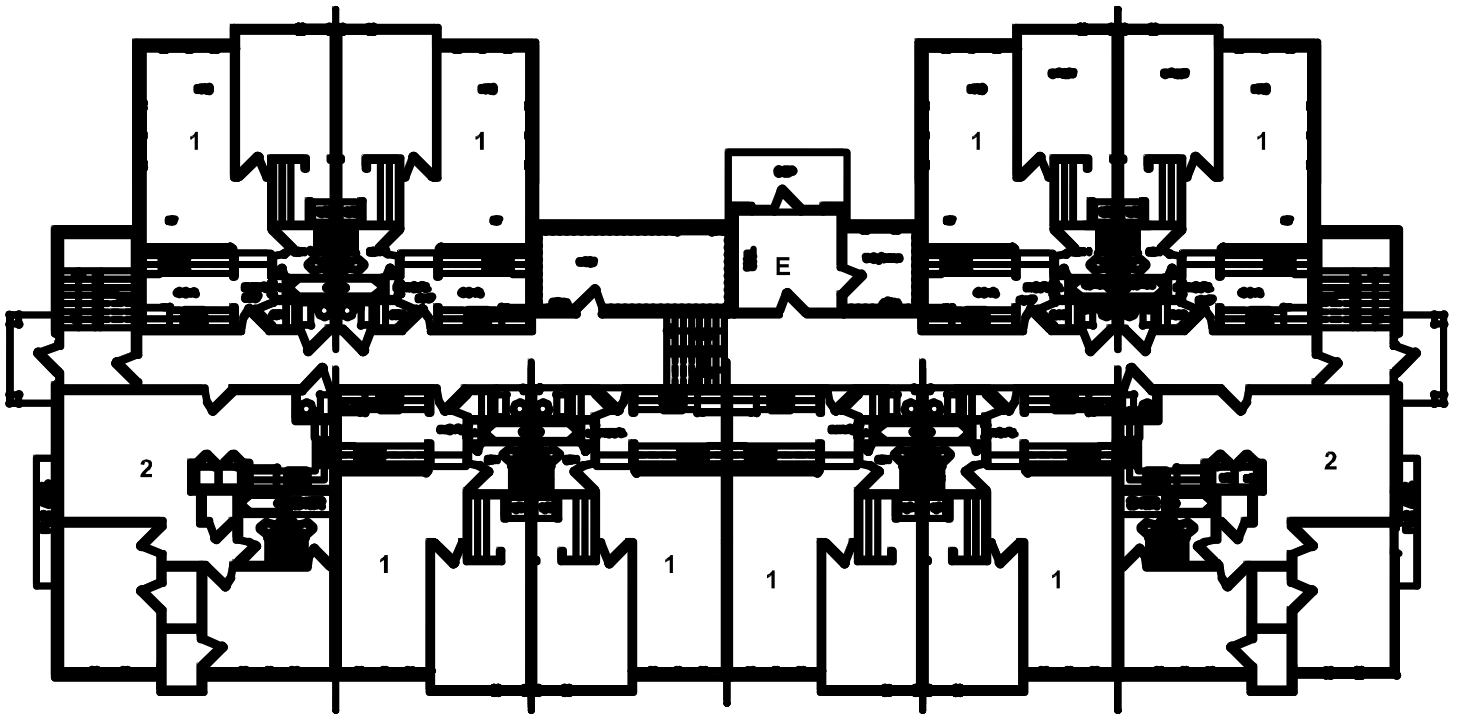
Budget Category 1:	Construction Costs	\$4,272,000
Budget Category 2:	Non-Construction Costs	<u>\$ 578,000</u>
	Total Project Costs	\$4,850,000

**CONSTRUCTION COST**

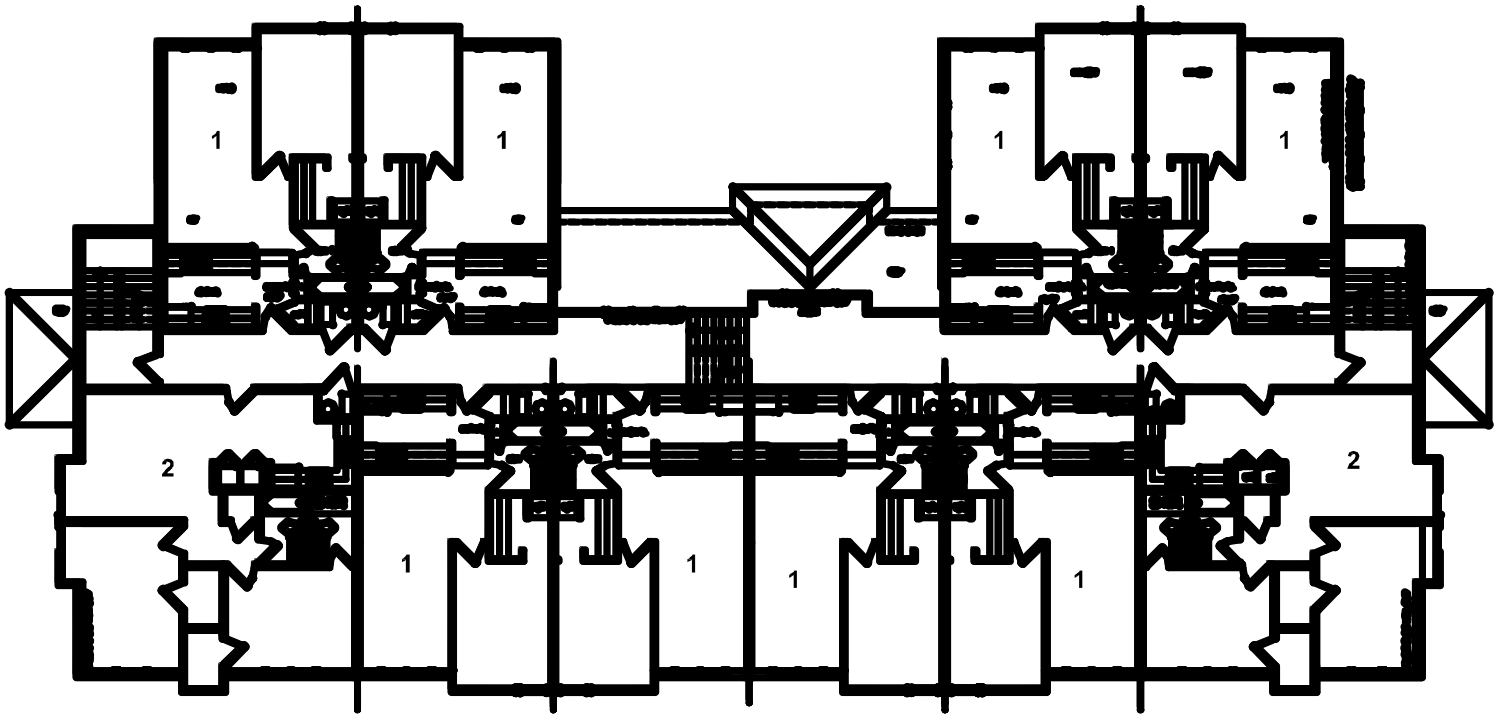
	Program Statement	Design Development
Construction Cost per Gross Square Foot:	\$ 69.90	\$ 73.23
Project Cost per Gross Square Foot:	\$ 79.35	\$ 83.12

**SCHEDULE**

Complete Design Development Documents	November 2003
Complete Construction Documents	December 2003
Bid Project	December 2003
Construction Start	December 2003
Substantial Completion of Construction	September 2004



MAIN LEVEL PLAN



SECOND & THIRD LEVEL PLAN



**East Elevation Rendering**